

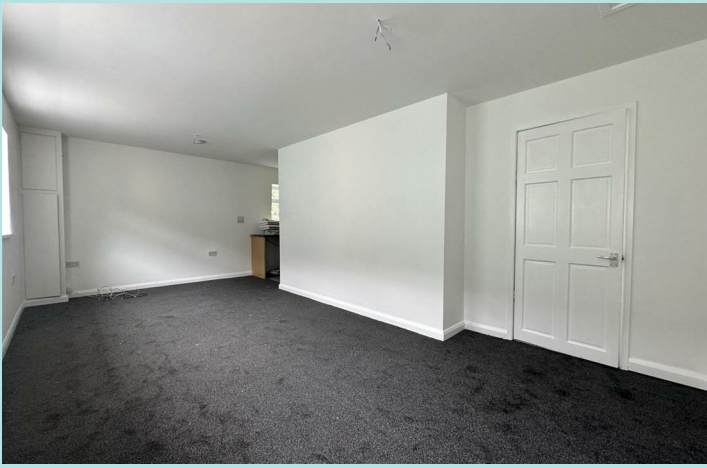


152 Haugh Shaw Road

Kings Cross, Halifax, HX1 3BG

£500 PCM





This one-bedroom flat offers spacious accommodation throughout conveniently located centrally in King Cross, Halifax along Haugh Shaw Road. Offering a multitude of amenities at your doorstep from leisure, shopping, or dining. King Cross offers excellent access to the public transport networks, through Halifax bus station and Sowerby Bridge train station.

Accommodation

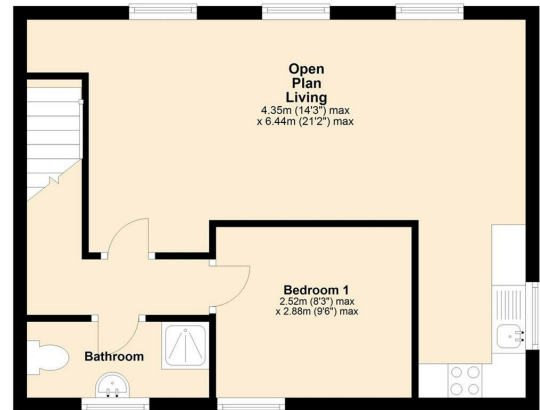
This recently redecorated accommodation briefly comprises: a bright and spacious lounge with open plan living kitchen, benefiting from integral electric fan assisted oven, four ring hob, free standing washing machine and free standing fridge freezer, double bedroom, bathroom with three piece white suite to include low flush w/c, hand wash basin and electric fed shower cubicle .

Location

Situated in King Cross, convenient of a variety of local amenities from superstores to eateries. Location benefits from great commuter links to Halifax, Sowerby Bridge and Huddersfield serviced by local bus routes and Sowerby Bridge railway station. There are greenspaces nearby including Manor Heath Park and Savile Park.

Council tax band: A
 EPC rating: D
 Deposit: £576

First Floor



ws-residential.co.uk

01484 711200



These particulars, whilst believed to be accurate are set out as a general outline only for guidance and do not constitute any part of an offer or contract. Intending purchasers should not rely on them as statements of representation of fact, but must satisfy themselves by inspection or otherwise as to their accuracy. No person in this firm's employment has the authority to make or give any representation or warranty in respect of the property.