



Kingsway Court Kingsway Court

Bethel Street, Brighouse, HD6 1JJ

£330 PCM





Located in the centre of Brighouse is this unfurnished studio flat that will be of special interest to a single professional person looking for accommodation situated close to local amenities and transport links. The property briefly comprises of living area with fitted kitchen and shower room

****Please note a Guarantor is required on this property****

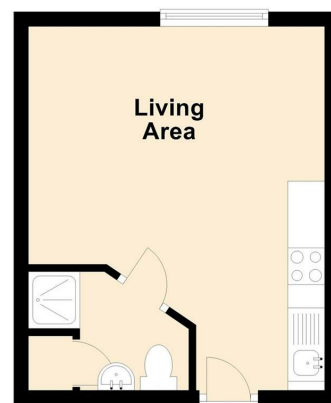
Accommodation

This studio flat has a spacious living area incorporating a fitted kitchen with integral electric cooker with electric hob, integral fridge and plumbing for washing machine and electric heaters. The shower room has a three piece suite including WC, pedestal wash basin and shower cubicle with heated towel rail.

Location

Centrally located within walking distance to the town of Brighouse with a wealth of amenities with train and bus station offering excellent commuter links to Huddersfield, Halifax and Leeds. There is no parking with this property however there are a number of paid carparks within the town centre.

Apt 19, Kingsway Court



Council tax band: A
 EPC rating: D
 Deposit: £380



ws-residential.co.uk

01484 711200



These particulars, whilst believed to be accurate are set out as a general outline only for guidance and do not constitute any part of an offer or contract. Intending purchasers should not rely on them as statements of representation of fact, but must satisfy themselves by inspection or otherwise as to their accuracy. No person in this firms employment has the authority to make or give any representation or warranty in respect of the property.