

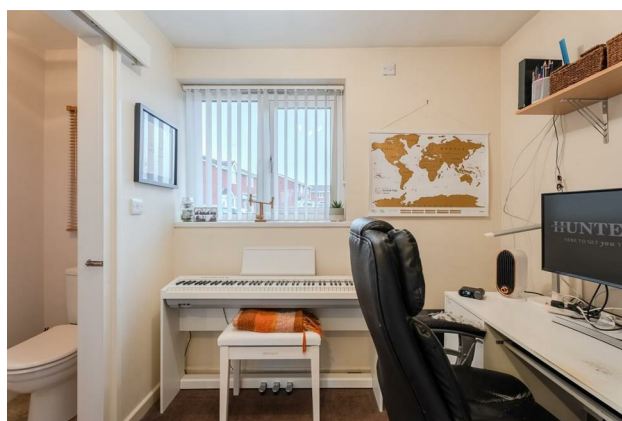
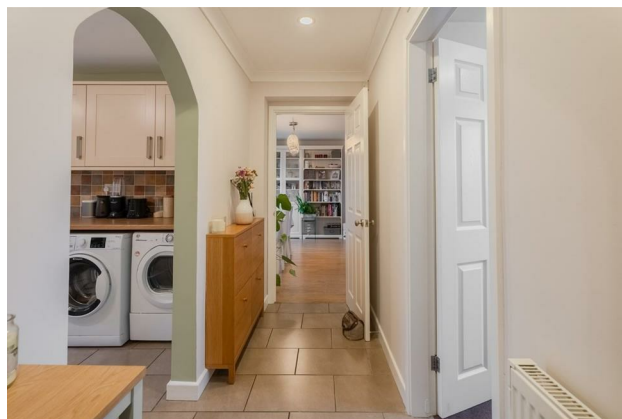
HUNTERS®

HERE TO GET *you* THERE

10 Bridgewater Drive, Coseley, Bilston, West Midlands, WV14 9PA

Offers In The Region Of £220,000

Property Images



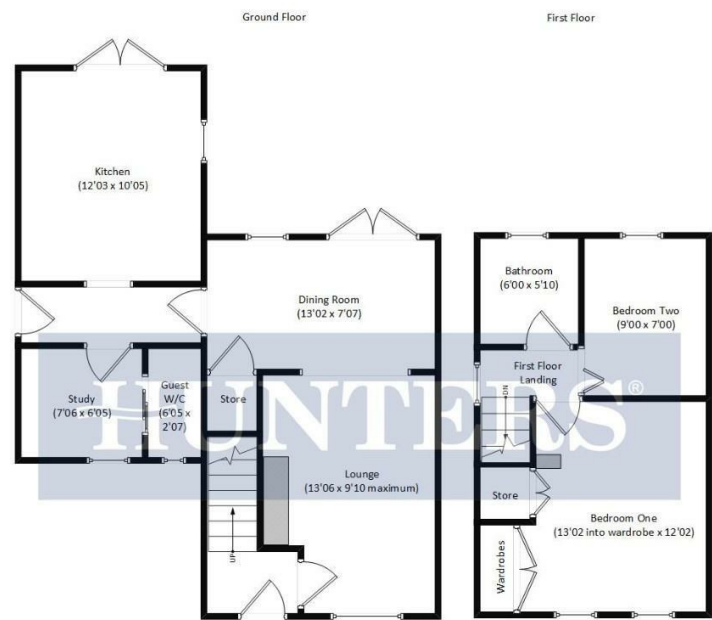
HUNTERS®

HERE TO GET *you* THERE

Property Images



Floorplan

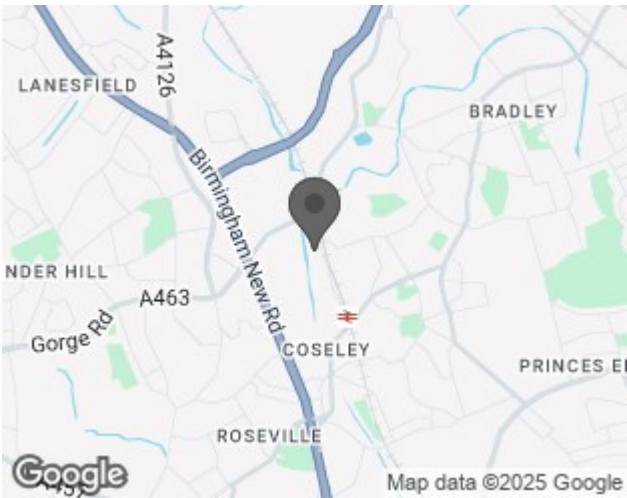


This floorplan is for illustrative purposes only and all measurements are approximate and not drawn to scale.

EPC

Energy Efficiency Rating		
	Current	Potential
Very energy efficient - lower running costs		
(92 plus) A		
(81-91) B		
(69-80) C		
(55-68) D		
(39-54) E		
(21-38) F		
(1-20) G		
Not energy efficient - higher running costs		
England & Wales	EU Directive 2002/91/EC	

Map



Details

Type: House - Semi-Detached Beds: 2 Bathrooms: 1 Receptions: 2 Tenure: Freehold

Summary

Hunters are pleased to present this extended semi detached home, occupying a corner plot location within walking distance of Coseley train station, offering regular routes into Wolverhampton & Birmingham City Centre. Perfect for first time buyers, the garage conversion and rear extension has vastly increased the downstairs living space to offer a spacious accommodation throughout the ground floor.

Briefly comprising of a through lounge diner with modern fitted kitchen situated to the rear, a home study and adjoining w/c complete the ground floor accommodation. Upstairs are two good sized bedrooms with the master boasting built in wardrobes and additional storage cupboard, meanwhile the house bathroom includes a w/c, wash hand basin and bathtub with shower head above.

To the fore is generous off road parking, meanwhile to the rear is an enclosed garden, perfect for enjoying summer days.

To arrange a viewing on this well presented home, please call the office where a member of our sales team will be happy to help.

Features

• EXTENDED SEMI DETACHED HOME • TWO GOOD SIZED BEDROOMS • WELL PRESENTED THROUGHOUT • IDEAL FOR FIRST TIME BUYERS • GARAGE CONVERSION • STUDY & DOWNSTAIRS W/C • CORNER PLOT LOCATION • PLEASE CALL 01902 672 274 TO ARRANGE A VIEWING!