

George V Avenue, Worthing

Offers Over £700,000

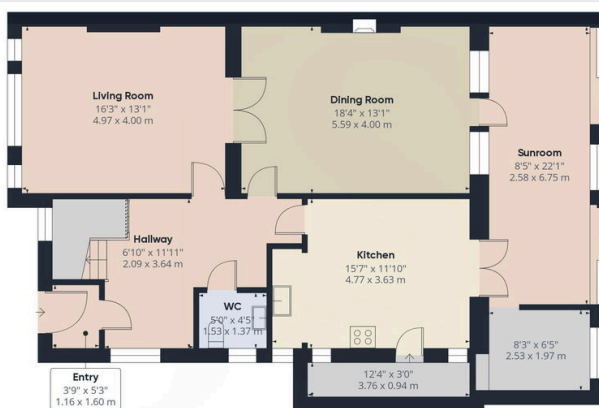
4 1 2



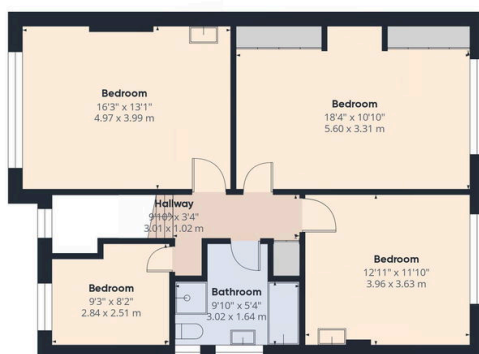
We're pleased to present this charming detached home on George V Avenue. Offering four bedrooms, two reception rooms, a kitchen/breakfast room, sunroom, ground-floor study, utility room, WC, and family bathroom. The property also features a garage, off-road parking, and a west-facing rear garden.

Key Features

- Detached House
- Two Reception Rooms
- Ground Floor Study & Sun Room
- Family Bathroom
- Off Road Parking & Garage
- Four Bedrooms
- Kitchen/ Breakfast Room & Utility Room
- Ground Floor WC
- West Facing Rear Garden
- Less Than 200 Yards From The Seafront



Ground Floor



Floor 1

Approximate total area⁽¹⁾
1907.58 ft²
177.22 m²

Reduced headroom
1.03 ft²
0.1 m²

(1) Excluding balconies and terraces

Reduced headroom
..... Below 5 ft/1.5 m

While every attempt has been made to ensure accuracy, all measurements are approximate, not to scale. This floor plan is for illustrative purposes only.

Calculations are based on RICS IPMS 3C standard.

GIRAFFE 360