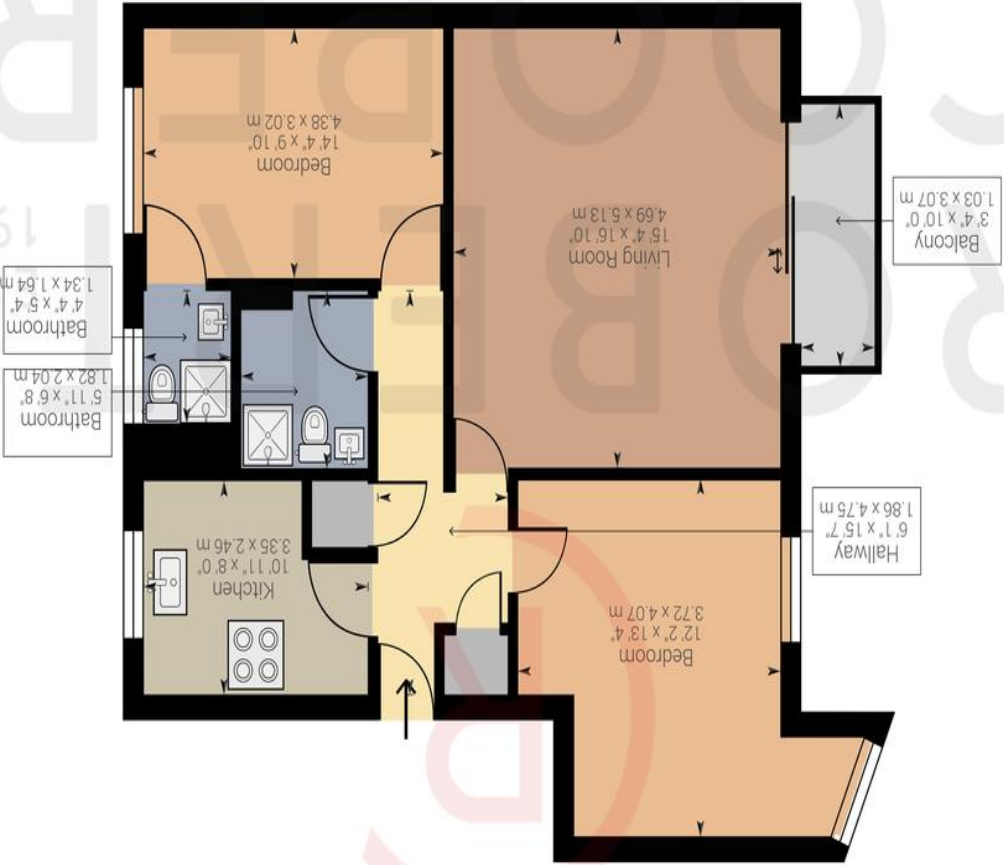


Powered by Gira360

Approximate net internal area: 810.88 ft<sup>2</sup> (846.77 ft<sup>2</sup>) / 75.33 m<sup>2</sup> (78.67 m<sup>2</sup>)  
While every attempt has been made to ensure accuracy, all measurements are approximate, not to scale. This floor plan is for illustrative purpose only and should be used as such by any prospective tenant or purchaser.



THE FORRESTERS, WINSLOW CLOSE, HA5 2QY  
£425,000







A very desirable two bedroom two bathroom first floor apartment within this highly sought after gated development "The Forresters" which is set in the heart of Eastcote with fantastic access to its vast array of shops and transport links. Features include no upper chain, two large double bedrooms, two bathrooms, south west facing balcony, share of freehold, allocated parking space, vast communal gardens, lift to all floors and over 800 square foot of living accommodation. The property is 0.5 miles away from Eastcote high street and train station (Metropolitan & Piccadilly Line).

Two Double Bedrooms

Two Bathrooms

South West Facing Balcony

Over 800 Sq Ft of Living Accomodation

Gated Development

Communal Gardens

Allocated Parking

No Upper Chain

Walking Distance To Met/Piccadilly Line

Lift To All Floors

