



Longkeeper



SITUATION

The house occupies a large, private and sheltered plot of approximately 0.35 acres, within the quiet hamlet of Mill Hill which is 2 miles from Tavistock town centre. The area is within close proximity of Devon Consuls Woods and the wider Tamar Valley, and therefore popular for walking, riding and cycling, whilst also being within extremely easy reach of Tavistock and its many facilities and amenities. A very popular local pub and farm shop, The Copper Penny Inn, can be found 1.2 miles to the west, and there is a fuel station and mini market 2.6 miles to the northwest. Tavistock itself is a thriving market town in West Devon, rich in history and tradition dating to the 10th century. Today, the town offers a superb range of shopping, recreational and educational facilities, including the sought-after private and independent school, Mount Kelly. Plymouth, with its coastal access, is 16 miles to the south. The cathedral city of Exeter lies 37 miles to the northeast, providing railway and motorway connections to the rest of the UK, plus an international airport.

DESCRIPTION

This extremely appealing, detached modern home occupies a very large plot in a quiet and picturesque hamlet located just a short distance outside of Tavistock. Having been constructed in 2003, this is the first time that this property has been offered to the open market. Internally, the flexible, contemporary 4-bedroom accommodation includes a built-in speakers and is characterised by large, bright, square rooms enjoying a good degree of natural light and being suitable for a variety of lifestyles. Of particular note is the triple-aspect kitchen/dining room which very much serves as the hub of this home. Externally, the property's undoubted highlights are its large front and rear gardens which offer tremendous space for active families and hobby gardeners alike, with the front garden in particular being level and enclosed. The house is accompanied by a detached double garage, and a large, electric gated driveway providing ample off-road parking.

ACCOMMODATION

The house is accessed on the ground floor via a canopy porch into the reception hallway, where there are doors off to the reception rooms and stairs leading up to the first floor. The sitting room is centred around a fireplace with an inset log-burning stove that has been recently installed, and there is a bay window to the front aspect with French doors leading out to the property's front garden. Across the hall, the kitchen/dining room is a wonderfully bright, triple-aspect room with a matching bay window to the front aspect. The kitchen is equipped with an excellent range of

cabinets and cupboards to three walls with rolltop worksurfaces which incorporate a 1.5-bowl composite sink and drainer with a multi-function detachable spray tap, plus an LPG-fired Rangemaster cooker with a 5-ring hob and double electric oven. There is space beneath the counter for a dishwasher and separate space for an upright American-style fridge-freezer. Beyond the kitchen is a utility/boot room where there is a range of secondary kitchen cabinets and plumbed spaces for laundry appliances. Off the utility can be found a cloakroom, and also on the ground floor is a dedicated home office, complete with power, ethernet and phone connections and with a large window looking out to the rear garden. From the hallway, an impressive staircase turns and rises to the first-floor landing which provides access to the four bedrooms and family bathroom. The principal bedroom is a large, bright room with an attractive outlook over the front garden, with a dressing area to one side incorporating a full-height triple wardrobe. The master is served by an en-suite shower room with a 3-piece suite to include a tiled corner shower enclosure. The second and third double bedrooms are similarly sized, both benefitting from a dual aspect and fitted wardrobe space. The fourth bedroom overlooks the rear garden and is complete with fitted shelving. Finally, the family bathroom is fully tiled and attractively finished with a 4-piece suite to include a shower enclosure with Mira Go electric shower and a panelled bath with spa jets.

OUTSIDE

The property is set back from the road and accessed through an electric double timber gate onto a long, gravelled drive. The property benefits from a large, level lawn front garden which is enclosed with mature hedging and shrubbery on all sides. The driveway provides off-road parking for a number of vehicles and leads to a double garage which has twin up-and-over doors, power and lighting connected. There is gated access to the side of the property leading to the steps that lead up to a small paddock which is enclosed by post, rail and wire mesh fencing. The rear garden would lend itself extremely well to keeping small domestic livestock, such as chickens, or otherwise to the creation of a vegetable garden. Within the rear garden, there is also a potting area with an external Belfast sink and water connection, plus outside power.

SERVICES

Mains electricity is connected. Private water via a bore hole and private drainage via a waste water treatment plant. Oil-fired central and underfloor heating downstairs. LPG cooker. Please note that the agents have neither inspected nor tested these services.

- Pub and Farm Shop 1.2 miles • Tavistock Town Centre 2.1 miles • Dartmoor National Park 3.5 miles • Plymouth City Centre 16.5 miles • Exeter 43.5 miles • What3words.com/valley.breakaway.rock
- For detailed directions please contact the

A very well-rounded, 4-bedroom home with a gated drive, double garage and large gardens, located in a quiet, semi-rural hamlet close to Tavistock.

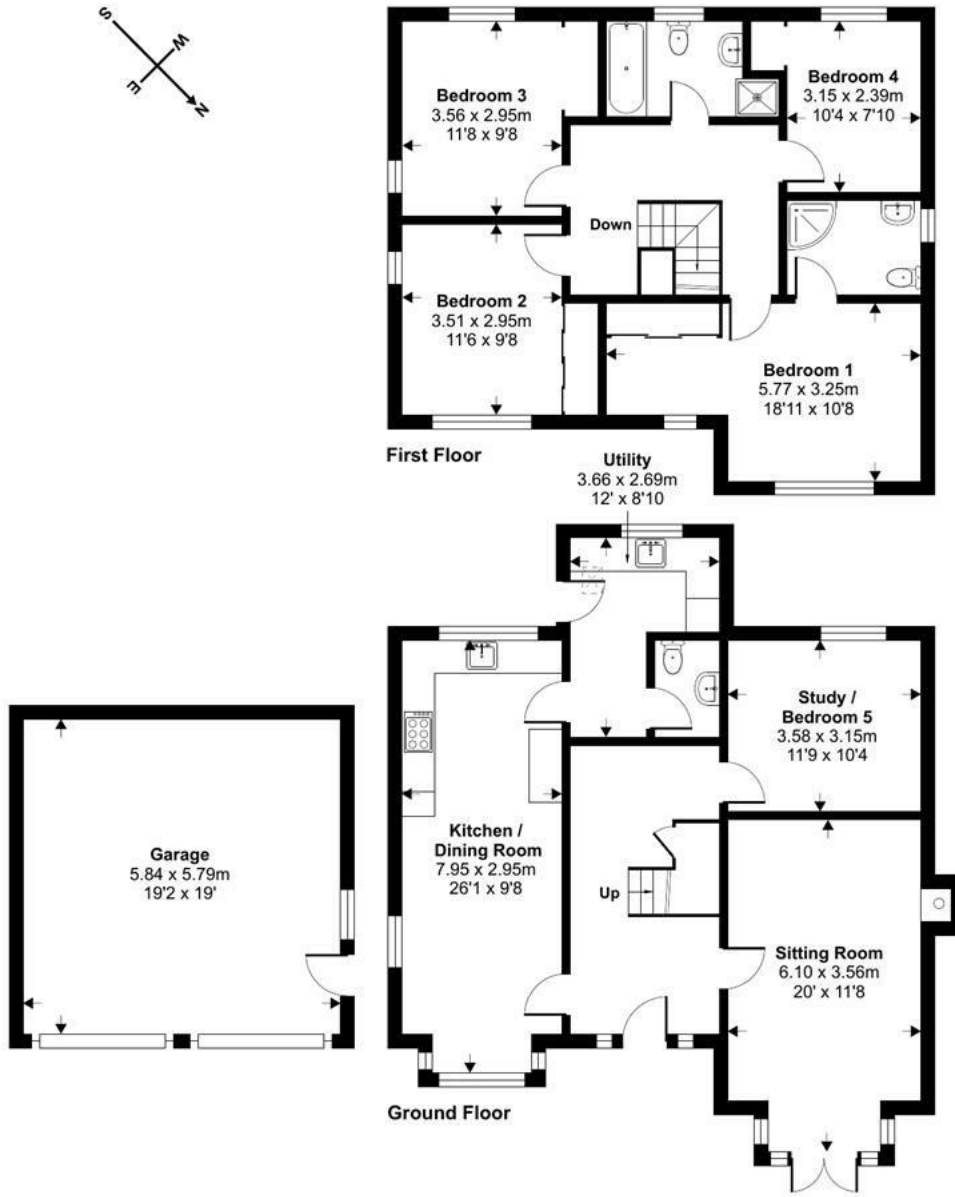
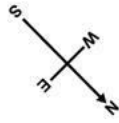
- Individual, Detached Modern Home
- 4 Bedrooms, 2 Reception Rooms
- Triple-aspect Kitchen/Diner, Separate Utility
- Large, Level Front Garden and Rear Paddock
- Detached Double Garage and Gated Driveway
- Quiet Hamlet Close to Tavistock
- Peaceful, Private and Picturesque Setting
- 0.35 Acres in All
- Council Tax Band: E
- Freehold

Guide Price £660,000



Approximate Area = 1676 sq ft / 155.7 sq m
 Garage = 364 sq ft / 33.8 sq m
 Total = 2040 sq ft / 189.5 sq m

For identification only - Not to scale



Floor plan produced in accordance with RICS Property Measurement Standards incorporating International Property Measurement Standards (IPMS2 Residential). © nichecom 2023. Produced for Stags. REF: 1031227

IMPORTANT: Stags gives notice that: 1. These particulars are a general guide to the description of the property and are not to be relied upon for any purpose. 2. These particulars do not constitute part of an offer or contract. 3. We have not carried out a structural survey and the services, appliances and fittings have not been tested or assessed. Purchasers must satisfy themselves. 4. All photographs, measurements, floorplans and distances referred to are given as a guide only. 5. It should not be assumed that the property has all necessary planning, building regulation or other consents. 6. Whilst we have tried to describe the property as accurately as possible, if there is anything you have particular concerns over or sensitivities to, or would like further information about, please ask prior to arranging a viewing.



Energy Efficiency Rating		Current	Potential
Very energy efficient - lower running costs	A		
Energy efficient - lower running costs	B		79
Decent energy efficiency - lower running costs	C	68	
Some energy efficiency - lower running costs	D		
Not very energy efficient - higher running costs	E		
Very poor energy efficiency - higher running costs	F		
Worst energy efficiency - higher running costs	G		
England & Wales		EU Directive 2002/91/EC	

Bedford Square, Tavistock, Devon, PL19 0AH

01822 612458

tavistock@stags.co.uk

stags.co.uk



@StagsProperty

Cornwall | Devon | Somerset | Dorset | London