



Alden Close

---

HELMSHORE





Country living, family comfort and convenient city connections combine just off the quiet country lane of Alden Road in Helmshore, an inviting traditional stone-built detached home made for modern living.

Parking for two awaits on the gated double width block paved driveway, alongside an EV charging point, while also to the front of this handsome home, a landscaped, low maintenance garden provides a pretty view from the lounge.

## Warm Welcome

Step inside, where the door opens to an airy, light and spacious entrance hallway, where diagonally laid wood-effect Karndean stretches out underfoot.

With its porthole window and warm, pale greige walls, the downstairs cloakroom to the right features wash basin and WC and is handy for guests. Continuing along the entrance hall, there is ample space for a large hallway console table underneath the stairs.

A traditional entrance hall with great flow, the ground floor rooms stem logically off from here, with the front lounge located on the left. Cosily carpeted underfoot in pale stone, contrasting with the rich, heritage green tones of the walls, creating a calm, cocooning and restful ambience.

Settle down on the sofa, before the warmth of the glass-fronted fire, nestled within the modern media wall within the chimney breast. Light streams in through the bay window to the front, dressed in plantation shutters for a truly contemporary and stylish finish.









## Feast Your Eyes

Across the entrance hallway, savour mealtimes in the extended family kitchen dining room, where the warmth from the underfloor heating seeps up through the stone-effect Karndean tiled floor.

Light and bright, patio doors to the rear bring the outdoors in, with ample space for a ten-seater dining table beneath the trio of pendant lights above. In summer, open the French doors and drift indoors and out, as the garden unfolds to the rear.

Dine casually at the breakfast bar within the central island, with granite worktops and space for four. Designed with practicality, panache and a perfect understanding of modern family life in mind, the island, featuring induction hob and wine fridge, looks out over the dining area ensuring conversations (and wine) can flow both before, during and after meals are prepared.

Recently fitted with a range of Neff appliances, including flush fitted extractor fitted within the ceiling, oven and dishwasher, the 1810 inset sink features a classic style instant boiling Quooker tap. Storage is plentiful with deep drawers within the island and floor to ceiling units to the walls.







## Work & Unwind

Returning to the entrance hall, to the right the study, plushly carpeted underfoot, provides a peaceful place in which to work from home, dressed in soothing shades, with a plantation shuttered window out to the garden and fully furnished with Hammonds drawers, desk and cabinetry.

Soaking up the sunlight, adjacent to the home office, the extended formal lounge to the rear, dressed in a muted warm, rich green, offers room for all the family to gather and unwind. Cosily carpeted underfoot, warmth emanates from the log burning stove, nestled within an elegant surround.

To the rear, apex windows, roof lanterns and bifolding doors bring the outdoors in, with a set of French doors opening to the patio ensuring the garden is always accessible – whatever the weather.









## Bedtime Beckons

Retracing your steps to the entrance hall, ascend the carpeted stairs to the first-floor landing, where to the right, the fourth bedroom, currently modelled as a country-chic study, awaits on the right, finished in soft wool carpet. Built-in Hammonds wardrobes provide storage whilst enchanting views await over the countryside.

Along the landing, past the airing cupboard, opposite the stairs blissful bathing awaits in the family bathroom. Stone tiles in neutral tones feature to the walls and floor, furnished with heated towel radiator, vanity unit wash basin, mirrored cupboard alongside a power shower with drench head above a centrally filling bathtub.

A home with fluidity and finesse, the guest bedroom continues the motif of country comfort, with soft sage hues and built in wardrobes overlooking the rear of the home. A comfortable double bedroom with ample space for bedside tables, soak up the views over the hilltops from the bed.











## Soak & Sleep

Turning right, make your way toward the front of the home, where the principal bedroom looks out through mullion style windows. A corner of built in wardrobes provides plenty of storage, with space again for bedside tables. Refresh and revive in the en suite, fully tiled and furnished with a corner shower.

“The main bedroom is a quiet, restful space.”











# Outdoor Escapes

Step outside and soak up the sunshine in one of several seating areas and patios in the rear garden, accessible from both the kitchen and rear lounge. Saturated in sunlight from first light until sundown, this is a garden made for entertaining, peaceful and private and not overlooked in any way. Soak up the serenity of the setting and watch the changing seasons in the countryside beyond. With a good size lawn ideal for children's games, two sheds provide storage for furniture and lawn mowers, there are both cold and hot outdoor taps available and accessed via the side of the property, in addition to two outdoor sockets.





# Out & About

Set within the heart of Helmshore, Alden Close enjoys a wonderfully balanced lifestyle where village charm, open countryside and everyday convenience come together. Nestled in the Rossendale Valley, Helmshore is known for its strong sense of community, rich heritage and easy access to some of Lancashire's most beautiful landscapes — making it an ideal setting for family life.

History lovers will enjoy having the Helmshore Mills Textile Museum close by, a fascinating attraction that brings the area's industrial past to life through interactive and family-friendly exhibitions. It's a wonderful reminder of the village's heritage and a popular spot for visitors of all ages.

For those who enjoy the outdoors, Helmshore offers an abundance of scenic walks and green spaces. From Alden Close, it's easy to explore peaceful local trails, spot wildlife or enjoy a leisurely walk around Calf Hey Reservoir, just a short distance away. The nearby River Ogden provides a tranquil backdrop for relaxed riverside strolls, while slightly further afield, open moorland and woodland routes invite longer weekend adventures.

Families are particularly well catered for when it comes to education. Helmshore Primary School is within a short walk, while St Veronica's Roman Catholic Primary School is also easily accessible. Secondary provision is well covered by Haslingden High School, which holds a 'Good' Ofsted rating and serves the wider area.

Everyday amenities are conveniently close at hand. Helmshore's local farmer's market, Neary's General Store and the village post office ensure essentials are never far away. When it's time to eat out or catch up with friends, there's a great choice of local favourites, including the family-friendly Cotton House pub and The Station, while Café Pearsons offers a welcoming spot for coffee and light bites. The Village Store is also nearby for top-up shopping.

Recreational facilities add further appeal. Rossendale Golf Club offers a challenging course with far-reaching valley views, while Snig Hole Park is perfect for children, dog walks and relaxed afternoons outdoors.

With excellent schooling, scenic walks, village amenities and a welcoming community on the doorstep, Alden Close offers the perfect setting for modern family living — combining countryside calm with the convenience of everyday life in one of Rossendale's most desirable villages.

A home defined by its flow, versatility and setting, No. 1 Alden Close offers insight into the truth of modern family living. With fluid rather than fixed functionality in the downstairs rooms, with provision for playroom, retreat or workspace as life changes, the kitchen remains the steady centre of the home.

Outdoors, the landscape opens up, with countryside walks, a nearby park and a garden made for both relaxation and play.

Magazine editorial presentation throughout conveys No. 1 Alden Close's turnkey ready beauty, a stylish, comforting and balanced home poised between rural calm and the practical pull of town and city life.





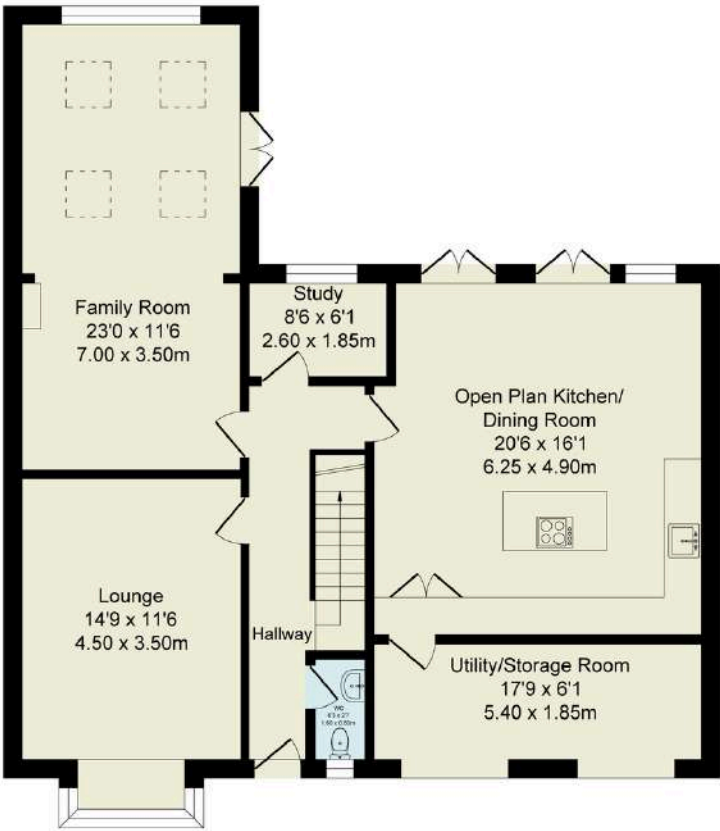
# The Finer Details

- Stone-Built Detached Family Home in Sought-After Helmshore
- Extended Open-Plan Kitchen Dining Room with Island & French Doors
- Neff Appliances, Quooker Tap & Underfloor Heating
- Two Reception Rooms Plus Dedicated Downstairs Study
- Principal Bedroom with Ensuite & Countryside Views
- Landscaped, Private Rear Garden with Multiple Seating Areas
- Gated Driveway Parking with EV Charging Point
- Quiet Cul-De-Sac Setting Close to Schools, Walks & Village Amenities
- Freehold
- Council Tax Band E

Score	Energy rating	Current	Potential
92+	A		
81-91	B		
69-80	C	75 C	78 C
55-68	D		
39-54	E		
21-38	F		
1-20	G		

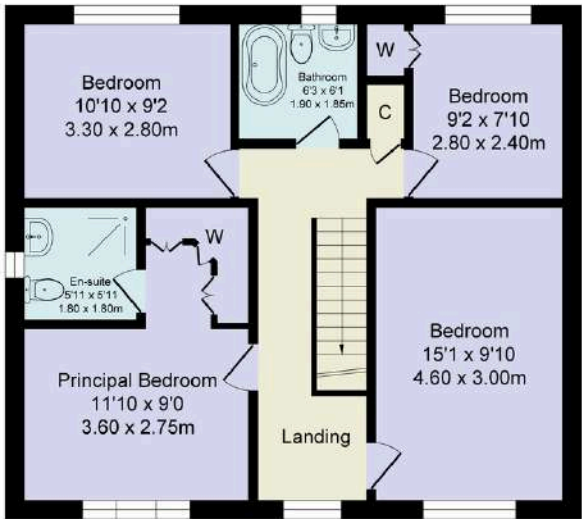
Total Approx. Floor Area 1779 Sq.ft. (165.3 Sq.M.)

Surveyed and drawn by Lens Media for illustrative purposes only. Not to scale. Whilst every attempt was made to ensure the accuracy of the floor plan, all measurements are approximate and no responsibility is taken for any error.



Ground Floor

Approx. Floor  
Area 1068 Sq.Ft  
(99.2 Sq.M.)



First Floor

Approx. Floor  
Area 711 Sq.Ft  
(66.1 Sq.M.)



WAINWRIGHTS  
ESTATE AGENTS

To view Alden Close,  
Call 01204 773556 or email [sales@wainwrightshomes.com](mailto:sales@wainwrightshomes.com)