



Highland Road, New Whittington Chesterfield S43 2EZ

welcome to

Highland Road, New Whittington Chesterfield

This substantial four bedroom detached home really does have it all, with two generous reception rooms, four comfortable bedrooms, a well-appointed kitchen and bathroom, off-street parking, integral garage with utility area, ground floor WC and mature garden! You really can have it all!

Entrance Hall

Double glazed exterior door opens into a welcoming entrance hall with tiled flooring, radiator, stairs to the first floor and doors to:

Wc

A must have in a modern home! Fitted with low level WC and vanity hand-wash basin. With complimentary bevel edged tiling, radiator and frosted double glazed window.

Dining Room

Well appointed with modern decor offering ample space for a dining suite and complimentary furnishings to taste. With grey, wood-effect ceramic tiles, radiator, handy under-stairs storage cupboard, double glazed window doors to:

Living Room

Room for all the family! This generous space is bathed in natural light through sliding double glazed doors which lead to the garden. The focal point of the room is a feature gas fireplace, which gives the space a cosy feel. With laminate flooring and radiator.

Kitchen

Fitted with a range of all base and drawer units with modern white gloss and complimentary wood grain effect finish. The kitchen is well stocked, having an eye-level oven and microwave, gas hob and extractor hood. Space is provided for a free-standing fridge/freezer. With sink and drainer unit set beneath a window overlooking the garden, tiled flooring, radiator and double glazed side door.

First Floor Landing

Carpeted stairs ascend to a central landing area with loft access, handy storage cupboard and doors to:

Bedroom One

A generous double bedroom with laminate flooring, radiator and both a double glazed window and skylight bringing natural light into the space.

Bedroom Two

A second comfortable double with a suite of fitted wardrobes providing ample storage. With laminate flooring, radiator and window to the rear.

Bedroom Three

Currently utilised as a stylish home office, this space is perfect for those who work from home, but could readily be utilised as a bedroom space again if required. With laminate flooring, radiator and window to the rear.

Bedroom Four

A comfortable single bedroom with laminate flooring, radiator, double glazed window to the front elevation and door to:

Storage

This additional storage space is the perfect hideaway, whether it be for toys, hobby supplies, or simply somewhere to stash the suitcases!

Bathroom

Fitted with a contemporary white suite comprising panel bath with electric shower over, pedestal hand-wash basin and low level WC. The bathroom features fully tiled walls and tiled flooring. With radiator and double glazed window.

Integral Garage

With manual up and over door, power and light. The garage also features a utility space to the rear.





Outside

The property sits back from the road and benefits from off-street parking and a mature lawn and shrubs to the front. To the rear the property offers a generous garden with patio area for entertaining, established lawn and decked seating area - perfect for summer BBQ's. At the head of the garden is a tranquil stream leading into the woodland beyond, some of which falls within the boundary of the property and is accessed via a small footbridge.



view this property online williamhbrown.co.uk/Property/CSF104898



welcome to

Highland Road, New Whittington Chesterfield

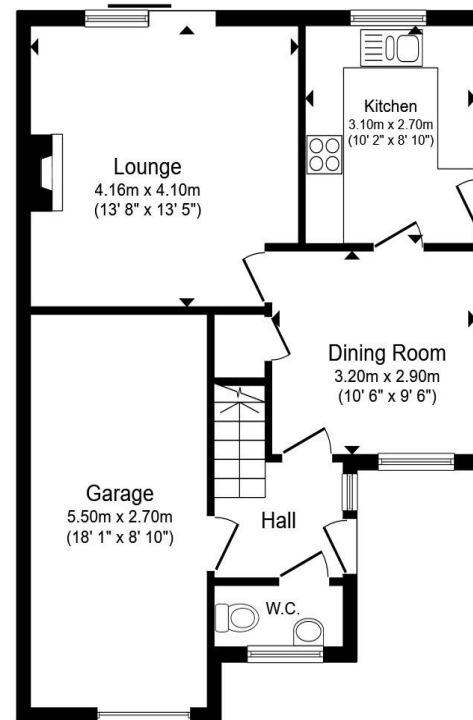
- **Guide Price £250,000 - £260,000**
- Council Tax Band C
- Two Generous Reception Rooms
- Four Bedrooms
- Integral Garage

Tenure: Freehold EPC Rating: C

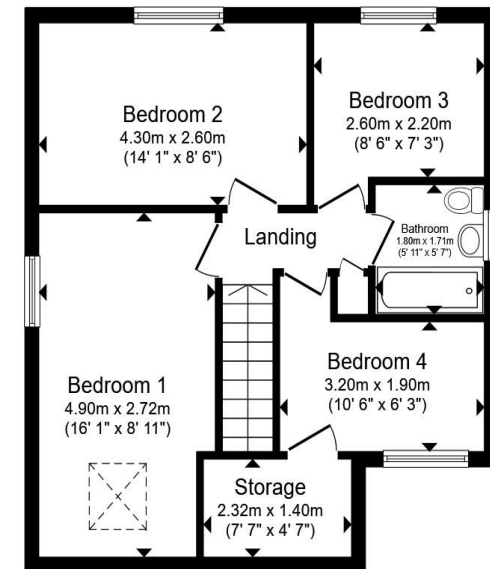
Council Tax Band: C

guide price

£250,000



Ground Floor



First Floor

Total floor area 108.0 m² (1,162 sq.ft.) approx

This floor plan is for illustrative purposes only. It is not drawn to scale. Any measurements, floor areas (including any total floor area), openings and orientation are approximate. No details are guaranteed, they cannot be relied upon for any purpose and they do not form part of any agreement. No liability is taken for any error, omission or misstatement. A party must rely upon its own inspection(s). Powered by www.propertybox.io


william
h brown

view this property online williamhbrown.co.uk/Property/CSF104898



Property Ref:
CSF104898 - 0007

1. MONEY LAUNDERING REGULATIONS Intending purchasers will be asked to produce identification documentation at a later stage and we would ask for your co-operation in order that there is no delay in agreeing the sale. 2. These particulars do not constitute part or all of an offer or contract. 3. The measurements indicated are supplied for guidance only and as such must be considered incorrect. Potential buyers are advised to recheck measurements before committing to any expense. 4. We have not tested any apparatus, equipment, fixtures or services and it is in the buyers interest to check the working condition of any appliances. 5. Where an EPC, or a Home Report (Scotland only) is held for this property, it is available for inspection at the branch by appointment. If you require a printed version of a Home Report, you will need to pay a reasonable production charge reflecting printing and other costs. 6. We are not able to offer an opinion either written or verbal on the content of these reports and this must be obtained from your legal representative. 7. Whilst we take care in preparing these reports, a buyer should ensure that his/her legal representative confirms as soon as possible all matters relating to title including the extent and boundaries of the property and other important matters before exchange of contracts.

William H Brown is a trading name of Sequence (UK) Limited which is registered in England and Wales under company number 4268443, Registered Office is Cumbria House, 16-20 Hockliffe Street, Leighton Buzzard, Bedfordshire, LU7 1GN. VAT Registration Number is 500 2481 05.


william h brown



01246 204492



chesterfield@williamhbrown.co.uk



6 Glumangate, CHESTERFIELD, Derbyshire, S40
1TP



williamhbrown.co.uk