



**Woodcote Way, CHESTERFIELD S40 3FF**

**welcome to**

**Woodcote Way, CHESTERFIELD**

Located in the popular residential location of Chesterfield is this Two Bedroom Semi Detached Home. Offering accommodation over two floors, this home is completed with a driveway with parking for two vehicles and two double bedrooms. Early Viewing is Essential to appreciate the home on offer.



## Lounge

12' 9" Max x 13' 6" Max ( 3.89m Max x 4.11m Max )

A front facing double glazed composite door opens to this well appointed lounge. Offering a PVCu double glazed window and a central heating radiator, whilst it is completed with stairs which rise to the first floor accommodation.

## Kitchen

14' 2" Max x 13' 4" Max ( 4.32m Max x 4.06m Max )

Fitted with a range of wall, base and draw units with contrasting work surfaces and a stainless steel sink and drainer with mixer tap. A built in electric oven can be found to the units, with a gas hob over and extractor above with a stainless steel splashback. This kitchen offers a built in fridge freezer, along with a built in automatic washing machine to the units. Further features of this kitchen include; a rear facing PVCu double glazed window, rear facing PVCu double glazed French patio doors and a storage cupboard which contains the boiler. Completing this kitchen is a central heating radiator and tiled flooring.

## Cloakroom

This cloakroom is a perfect addition to any home, offering a low flush w.c and a pedestal hand wash basin. Completing this cloakroom is a central heating radiator and tiling to the floors.

## Landing

Stairs rise from the lounge to this first floor landing, which is completed with the loft access hatch and a central heating radiator.

## Bedroom One

10' 3" Max x 13' 6" Max ( 3.12m Max x 4.11m Max )

This rear facing master bedroom offers a PVCu double glazed window and a central heating radiator.

## Bedroom Two

9' 3" Max x 13' 6" Max Into Recess ( 2.82m Max x 4.11m Max Into Recess )

This front facing double bedroom offers a PVCu double glazed window and a central heating radiator, whilst it is completed with a built in storage cupboard.

## Bathroom

This bathroom is fitted with a three piece suite comprising of a low flush w.c and a pedestal hand wash basin. Completing the suite is a panelled bath, with a mains shower over. Whilst this bathroom offers part wall tiling, it is completed with a central heating radiator and tiling to the floors.

## Outside & Exterior

This property found on Woodcote way offers a driveway to the front with parking for two vehicles. A shared, planted border can be found to the front of this property, whilst it is completed with a small lawn. A gate gives access to the rear of the property.

The gardens to the rear of the home open from the kitchen to a paved patio, offering a perfect outdoor seating area. The gardens extend to a laid to lawn garden, with planted borders of shrubs and plants.



**view this property online** [williamhbrown.co.uk/Property/CSF103675](http://williamhbrown.co.uk/Property/CSF103675)





welcome to

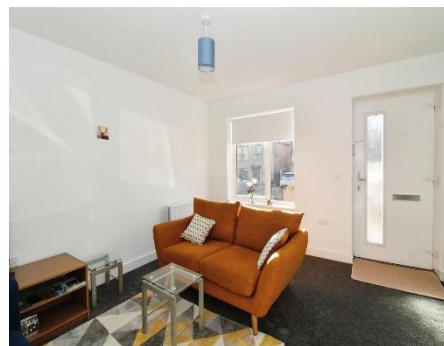
## Woodcote Way, CHESTERFIELD

- Council Tax band: B
- Two Bedroom Semi Detached Home
- Lounge, Kitchen Diner and Cloakroom
- Two First Floor Double Bedrooms and Bathroom
- Gardens to the Front and Rear

Tenure: Freehold EPC Rating: B

offers in the region of

**£230,000**



Please note the marker reflects the postcode not the actual property

**view this property online** [williamhbrown.co.uk/Property/CSF103675](http://williamhbrown.co.uk/Property/CSF103675)



Property Ref:  
CSF103675 - 0005

1. MONEY LAUNDERING REGULATIONS Intending purchasers will be asked to produce identification documentation at a later stage and we would ask for your co-operation in order that there is no delay in agreeing the sale. 2. These particulars do not constitute part or all of an offer or contract. 3. The measurements indicated are supplied for guidance only and as such must be considered incorrect. Potential buyers are advised to recheck measurements before committing to any expense. 4. We have not tested any apparatus, equipment, fixtures or services and it is in the buyers interest to check the working condition of any appliances. 5. Where an EPC, or a Home Report (Scotland only) is held for this property, it is available for inspection at the branch by appointment. If you require a printed version of a Home Report, you will need to pay a reasonable production charge reflecting printing and other costs. 6. We are not able to offer an opinion either written or verbal on the content of these reports and this must be obtained from your legal representative. 7. Whilst we take care in preparing these reports, a buyer should ensure that his/her legal representative confirms as soon as possible all matters relating to title including the extent and boundaries of the property and other important matters before exchange of contracts.

William H Brown is a trading name of Sequence (UK) Limited which is registered in England and Wales under company number 4268443, Registered Office is Cumbria House, 16-20 Hockliffe Street, Leighton Buzzard, Bedfordshire, LU7 1GN. VAT Registration Number is 500 2481 05.

  
william h brown



**01246 204492**



[chesterfield@williamhbrown.co.uk](mailto:chesterfield@williamhbrown.co.uk)



6 Glumangate, CHESTERFIELD, Derbyshire, S40  
1TP



[williamhbrown.co.uk](http://williamhbrown.co.uk)