

HUNTERS[®]

HERE TO GET *you* THERE

18 Greentop, New Crofton, Wakefield, WF4 1JT

£220,000

Property Images



HUNTERS®

HERE TO GET *you* THERE

Property Images



Floorplan



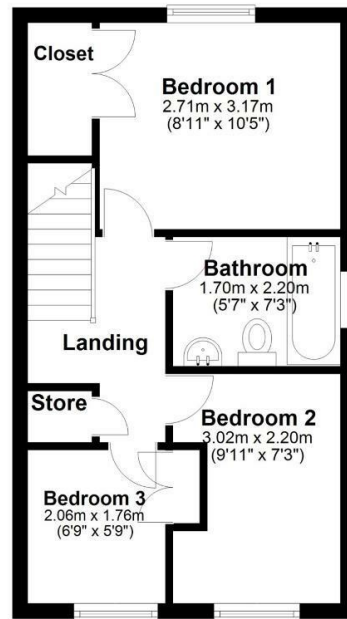
Ground Floor

Approx. 31.4 sq. metres (337.5 sq. feet)



First Floor

Approx. 31.4 sq. metres (337.5 sq. feet)



Total area: approx. 62.7 sq. metres (675.1 sq. feet)

EPC

Energy Efficiency Rating		Current	Potential
<i>Very energy efficient - lower running costs</i>			
(92 plus) A			
(81-91) B			
(69-80) C		68	
(55-68) D			
(39-54) E			
(21-38) F			
(1-20) G			
<i>Not energy efficient - higher running costs</i>			
England & Wales	EU Directive 2002/91/EC		

Map



Details

Type: House - Semi-Detached Beds: 3 Bathrooms: 1 Receptions: 1
 Tenure: Freehold

The property has neutral decor and laminate flooring and carpet throughout. A front entrance opens into the living room with dual aspect windows, feature Adam style surround and an under stairs storage cupboard. The kitchen is of a good size, fitted with base and wall units and worktop surfaces incorporating an inset sink, four ring gas hob with extractor fan over and an integrated oven, a wall mounted boiler and space for a breakfast table and chairs

To the first floor are three bedrooms and a bathroom fitted with a vanity WC, hand wash basin inset into a vanity storage unit and a rectangular bath. Complimentary tiling to walls.

Externally to the front is a low maintenance pebbled open plan garden and a driveway leading to the rear. The rear garden is laid to lawn with a paved area.

Features

- WONDERFUL FREEHOLD HOME • EPC GRADE D - COUNCIL TAX BAND C • SEMI DETACHED PROPERTY • THREE BEDROOMS • DRIVE WITH PARKING • CLOSE TO WAKEFIELD AND AMENITIES • SEMI RURAL LOCATION • CLOSE TO WALKS • CLOSE TO GOLF CLUBS AND NATIONAL TRUST LOCATION