

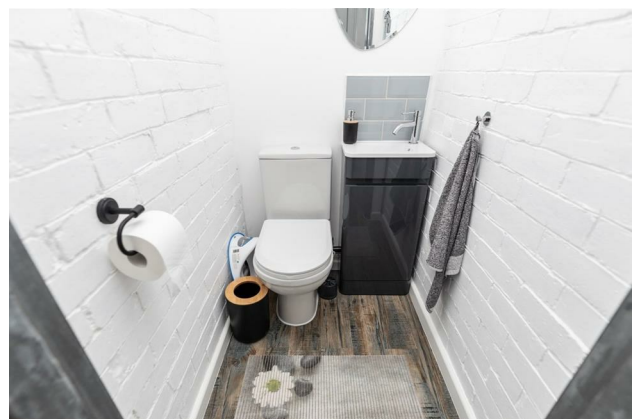
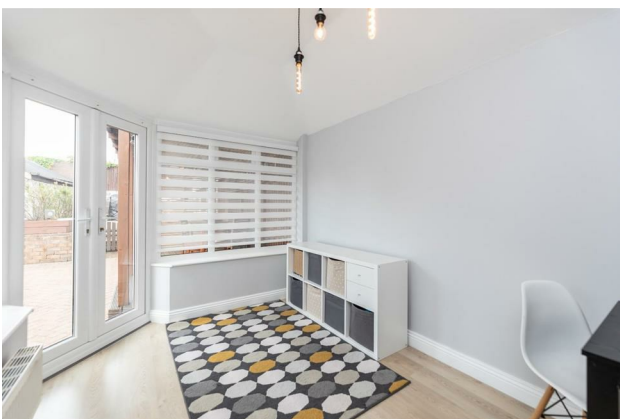
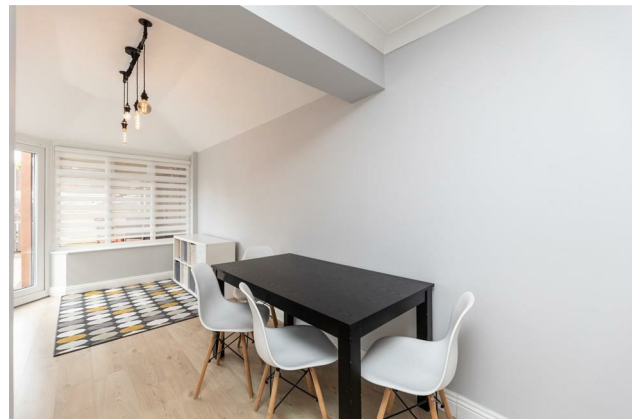
HUNTERS[®]

HERE TO GET *you* THERE

21 Healdwood Road, Airedale, Castleford, WF10 3BQ

Offers Over £145,000

Property Images



HUNTERS®

HERE TO GET *you* THERE

Property Images

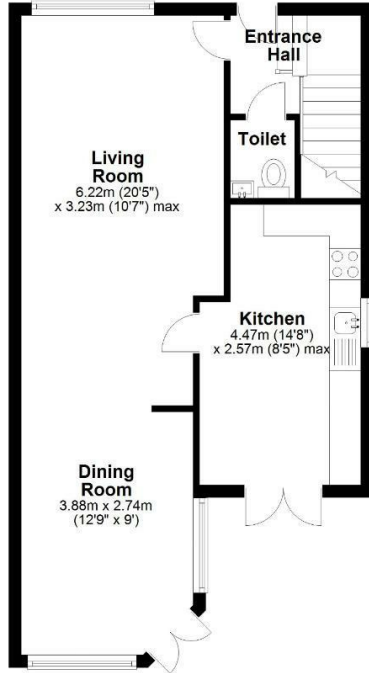


Floorplan



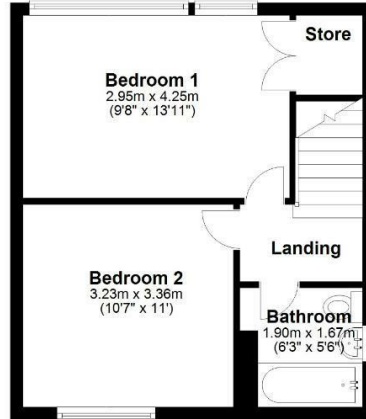
Ground Floor

Approx. 47.0 sq. metres (505.7 sq. feet)



First Floor

Approx. 33.5 sq. metres (360.4 sq. feet)



Total area: approx. 80.5 sq. metres (866.1 sq. feet)

EPC

Energy Efficiency Rating		Current	Potential
<i>Very energy efficient - lower running costs</i>			
(92 plus) A			81
(81-91) B			
(69-80) C		69	
(55-68) D			
(39-54) E			
(21-38) F			
(1-20) G			
<i>Not energy efficient - higher running costs</i>			
England & Wales		EU Directive 2002/91/EC	

Map



Details

Type: House - Semi-Detached Beds: 2 Bathrooms: 1 Receptions: 2 Tenure: Freehold

Summary

Hunters are pleased to offer to the market this wonderful, well presented two bedroom semi detached home in an area of similar properties. Extended to the rear with a wonderful sunroom, ideal for a dining room or play room, this property would make a lovely family home.

Features

• FREEHOLD • COUNCIL TAX BAND A • EPC GRADE C • TWO GOOD SIZED BEDROOMS • OFF STREET PARKING • ENCLOSED REAR GARDEN • SUNROOM EXTENSION • CLOSE TO AMENITIES AND MOTORWAYS • PERFECT FAMILY HOME • HIGHLY RECOMMENDED