

HUNTERS®

HERE TO GET *you* THERE

55 Cedar Grove, Featherstone, Pontefract, WF7 6JP

Offers In Excess Of £140,000

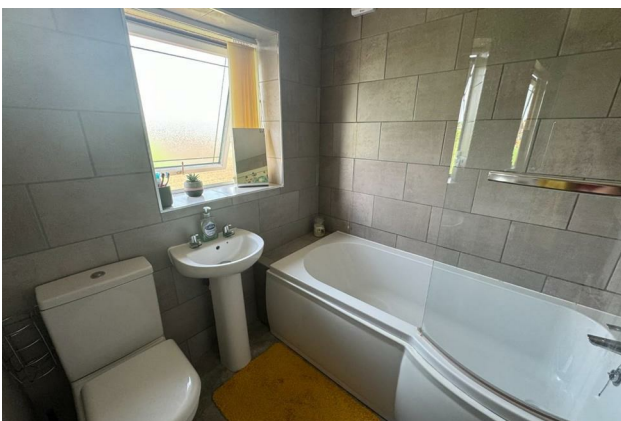
Property Images



HUNTERS®

HERE TO GET *you* THERE

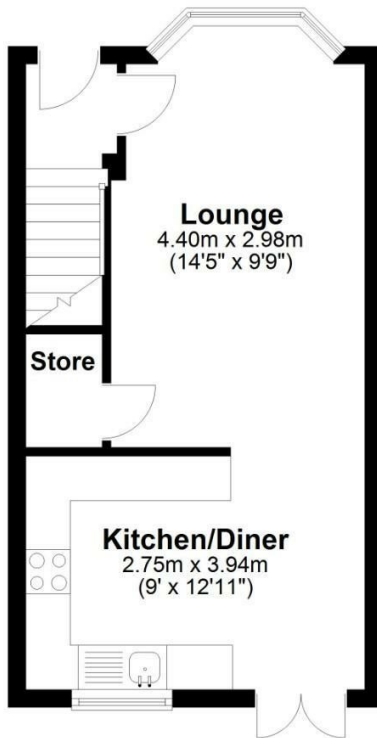
Property Images



Floorplan

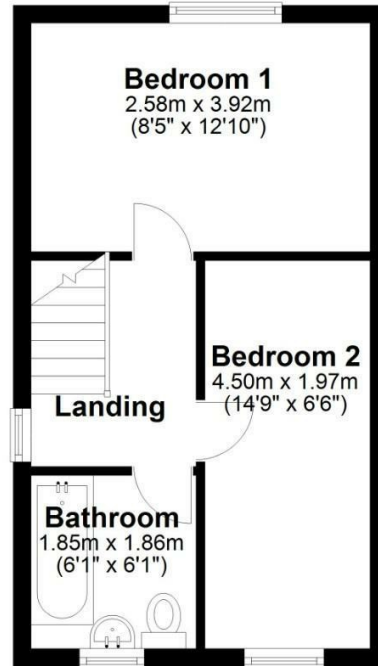
Ground Floor

Approx. 27.2 sq. metres (292.6 sq. feet)



First Floor

Approx. 26.9 sq. metres (289.9 sq. feet)

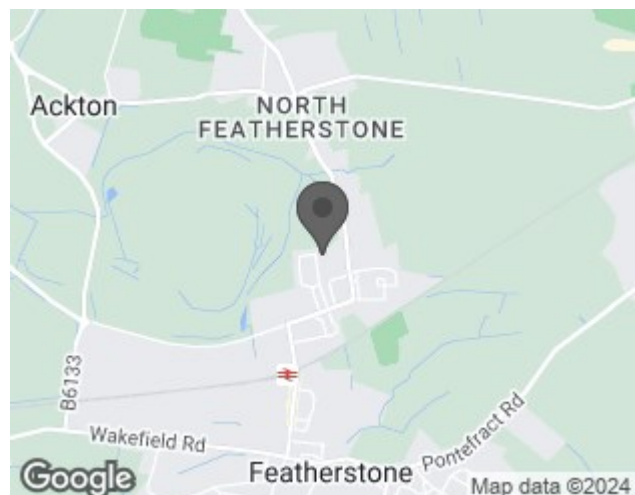


Total area: approx. 54.1 sq. metres (582.5 sq. feet)

EPC

Energy Efficiency Rating		Current	Potential
Very energy efficient - lower running costs			
(92 plus) A			87
(81-91) B			
(69-80) C		71	
(55-68) D			
(39-54) E			
(21-38) F			
(1-20) G			
Not energy efficient - higher running costs			
England & Wales		EU Directive 2002/91/EC	

Map



Details

Type: House - Semi-Detached Beds: 2 Bathrooms: 1 Receptions: 1 Tenure: Freehold

Summary

Situated in the popular town of Featherstone close to local amenities and schools this 2 bedroom semi detached property has outstanding views to the rear and needs to be viewed to be appreciated.

The property briefly comprises to the ground floor; entrance hallway, spacious lounge with archway through to the dining kitchen featuring a range of base and wall units in modern grey with complimentary tiles, space for a family dining table and patio doors out to the rear garden. Upstairs are 2 generous bedrooms and family bathroom with white 3 piece suite and floor to ceiling modern grey tiles.

To the front of the property is a pleasant garden and driveway for multiple vehicles and to the rear is an enclosed larger than average garden with decked patio area overlooking the neighbouring fields.

Features

- OUTSTANDING VIEWS TO THE REAR • LARGE ENCLOSED REAR GARDEN • PARKING FOR MULTIPLE VEHICLES • 2 GENEROUS BEDROOMS • MODERN KITCHEN AND BATHROOM • CLOSE TO AMENITIES • FREEHOLD • COUNCIL TAX BAND B • EPC RATING C • VIEWING ESSENTIAL