

# HUNTERS®

HERE TO GET *you* THERE

**7 Bailey Court, Castleford, WF10 3FL**

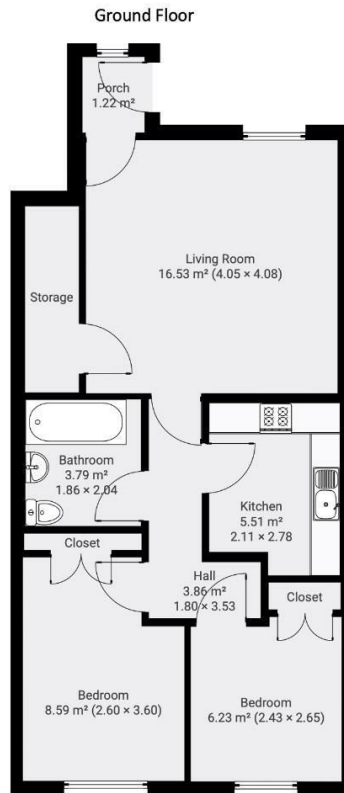
**Asking Price £95,000**

Property Images



## Property Images





## EPC

Energy Efficiency Rating		Current	Potential
<i>Very energy efficient - lower running costs</i>			
(92 plus) <b>A</b>			
(81-91) <b>B</b>		80	81
(69-80) <b>C</b>			
(55-68) <b>D</b>			
(39-54) <b>E</b>			
(21-38) <b>F</b>			
(1-20) <b>G</b>			
<i>Not energy efficient - higher running costs</i>			
<b>England &amp; Wales</b>	EU Directive 2002/91/EC		

## Map



## Details

Type: Flat Beds: 2 Bathrooms: 1 Receptions: 1 Tenure: Leasehold

## Summary

\*\*\* TAKE THE STEP INTO YOUR NEXT INVESTMENT OR YOUR FIRST HOME \*\*\*

Offered to the market with No upper chain and sold with tenants in situ is this ground floor two bedroom flat. This property is situated close to local amenities, with excellent transport links and close to town centre. This property is the perfect investment opportunity and ready to go.

The property briefly comprises of entrance, living room, house bathroom, kitchen and two double bedrooms. The living room provides double glazed window to the front aspect and hand cupboard for further storage space. The kitchen consists of wooden units to wall and base level, part tiling splash back and integrated oven, hob and extractor fan. The house bathroom includes white three piece suite with shower over bath and part tiling throughout.

Externally, the property offers off street parking to the rear.

## Features

- EPC RATING C • COUNCIL TAX BAND A • GREAT FIRST TIME BUY • PERFECT INVESTMENT • TWO DOUBLE BEDROOMS • GROUND FLOOR FLAT • CLOSE TO LOCAL AMENITIES • OFF STREET PARKING • NO CHAIN • LEASEHOLD