

HUNTERS®

HERE TO GET *you* THERE

8 Bailey Court, Castleford, WF10 3FL

Asking Price £95,000

Property Images



HUNTERS®

HERE TO GET *you* THERE

Property Images



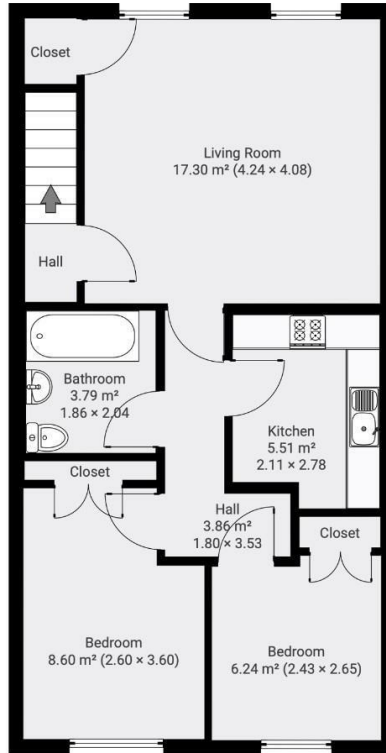
HUNTERS[®]

HERE TO GET *you* THERE

Property Images



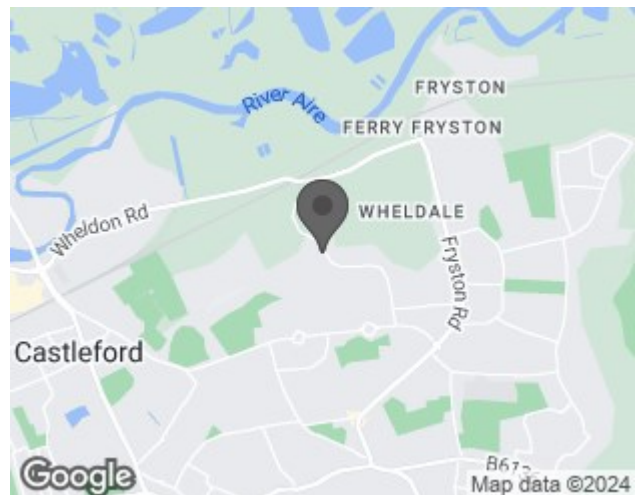
First Floor



EPC

Energy Efficiency Rating		Current	Potential
<i>Very energy efficient - lower running costs</i>			
(92 plus) A			
(81-91) B		81	81
(69-80) C			
(55-68) D			
(39-54) E			
(21-38) F			
(1-20) G			
<i>Not energy efficient - higher running costs</i>			
England & Wales	EU Directive 2002/91/EC		

Map



Details

Type: Flat Beds: 2 Bathrooms: 1 Receptions: 1 Tenure: Leasehold

Summary

*** TAKE THAT STEP INTO YOUR NEXT INVESTMENT OR YOUR FIRST HOME ***

Offered to the market with NO upper chain and is this upper floor two bedroom flat. Situated close to local amenities with excellent transport links and easy access to town centre.

This modern, well maintained flat briefly comprises of, entrance/stairway, lounge, two double bedrooms, kitchen and main bathroom. The living area provides double glazed window to the front aspect and a cupboard providing plenty of storage space. The kitchen consists of marble effect wooden work tops with gloss units to wall and base level, and integrated oven, hob and extractor fan. The family bathroom includes white three piece suite with shower over bath and modern part tiling throughout. Externally, the property offers off street parking to the front of the property.

Viewings are a must to truly appreciate this property.

Features

- COUNCIL TAX BAND A • EPC RATING B • GREAT FIRST TIME BUY • PERFECT INVESTMENT • MODERN THROUGHOUT • UPPER FLOOR FLAT • WELL MAINTAINED • CLOSE TO LOCAL AMENITIES • TWO DOUBLE BEDROOMS • OFF STREET PARKING