



Bush Elms Road, Hornchurch, RM11

Offers Over £600,000

4 2 2



Situated within close proximity to both Gidea Park and Romford Elizabeth Line Stations and is within proximity to numerous good local schools such as Hylands Primary, St. Mary's Catholic Primary and Frances Bardsley Academy, is this beautifully presented four bedroom end of terrace house. The home enjoys a spacious reception room, open plan kitchen / dining room to the ground floor, four sizeable bedrooms, a bathroom, and a separate W/C spread across two upper levels, whilst externally there is off street parking, side access and a 72' rear garden.

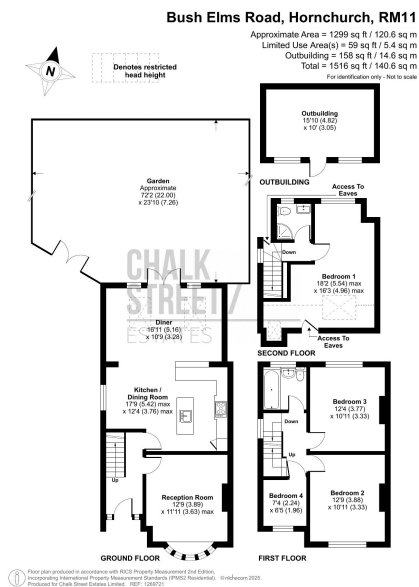
Upon entering the home, you are greeted with a welcoming hallway with stairs rising to the first floor.

At the front of the home, drawing light from the large bay window, is the reception room which is beautifully presented with a neutral palette, deep skirtings, decorative cornice, ceiling rose and high quality wooden flooring underfoot.

Spanning the rear of the home, situated within the rear extension, is the open plan kitchen / dining room. The stylish kitchen comprises numerous wall and base units, ample worktop space and a centre island housing essential kitchen appliances. French patio doors open onto the rear garden whilst the overhead sky lanterns flood the entire space with an abundance of natural light.

Heading upstairs, there are two large double bedrooms and a further single. Also located on this floor is the well-appointed family bathroom.





- Four Bedrooms
- End of Terrace House
- Well Presented Throughout
- Spacious Reception Room
- Open Plan Kitchen / Dining Room
- Master Bedroom With En-Suite
- Off Street Parking
- 72'2 Rear Garden With Large Outbuilding
- Walking Distance To Local Schools, Shops and Park
- 1 Mile from Romford Elizabeth Line Station

