



Boreham Holt, Elstree WD6

MORRIS & JOEL

We are proud to offer FOR SALE as SOLE AGENT this well maintained and spacious Two Double Bedroom GROUND FLOOR APARTMENT situated within this sought-after purpose-built development.



A: 48 Shenley Road
Borehamwood
Hertfordshire, WD6 1DS

T: 020 3621 8080

E: enquiries@morrisandjoel.com

W: www.morrisandjoel.com

Popular Purpose-Built Development | Ground Floor | Two Double Bedrooms

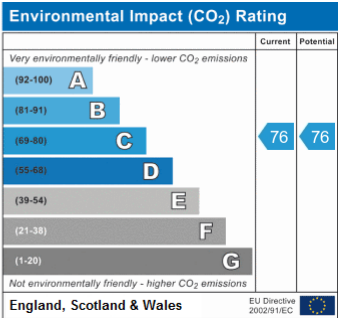
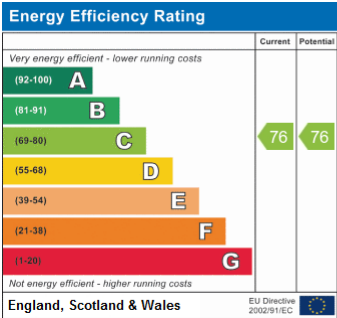
Living/Dining Room | Fitted Kitchen | Bathroom/WC

Garage | Gas Central Heating | Landscaped Communal Gardens | Walking Distance to Elstree & Borehamwood Station

£329,950 Leasehold

DESCRIPTION

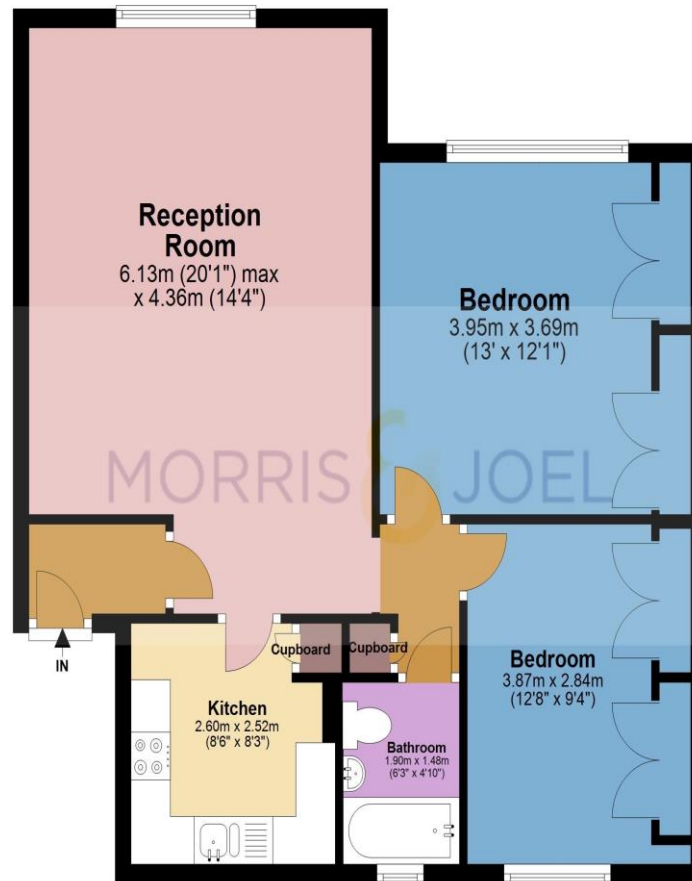
We are proud to offer FOR SALE as SOLE AGENT this well maintained and spacious Two Double Bedroom GROUND FLOOR APARTMENT situated within this sought-after purpose-built development. The property benefits from an attractive size Living/Dining Room, a Fitted Kitchen, a Fully Tiled Bathroom, Gas Central Heating, an Entry Phone System, a garage and well maintained landscaped communal Gardens. Boreham Holt is conveniently located within walking distance to Borehamwood High Street offering a wide range of local shops and amenities. Transportation Links include Elstree & Borehamwood Train Station and convenient bus links. Viewings are highly recommended.





Ground Floor

Approx. 65.2 sq. metres (702.1 sq. feet)



Total area: approx. 65.2 sq. metres (702.1 sq. feet)

While we do not doubt the floor plans accuracy, we make no guarantee, warranty or representation as to the accuracy and completeness of the floor plan. You or your advisors should conduct a careful, independent investigation of the property to determine to your satisfaction as to the suitability of the property for your space requirements. Plan produced by

www.propertypics.co.uk using PlanUp.

Plan produced using PlanUp.

FOR CLARIFICATION

We wish to inform prospective purchasers that we have prepared these sales particulars as a general guide. We have not carried out a detailed survey, nor tested the services, appliances and specific fittings. Room sizes are approximate and rounded: they are taken between internal wall surfaces and therefore included cupboards/shelves, etc. Accordingly, they should not be relied upon for carpets and furnishings. Formal notice is also given that all fixtures and fittings, carpeting, curtains/blinds and kitchen equipment, whether fitted or not, are deemed removable by the vendor unless specifically itemised within these particulars.

MORRIS & JOEL