



Mathern Road, £380,000

- Four spacious bedrooms
- Modern kitchen with dining area
- Attic conversion for extra space
- Snug and utility area included
- Private garden with bar and BBQ
- EPC Rating: C
- Council Tax: D



 3
  1
  2



About the property

This exceptionally spacious and wonderfully designed four-bedroom family home, located in the popular Bulwark area is a must be viewed!!!. The property offers spacious living spread over 3 floors with two reception rooms, providing a versatile layout for families. The well-appointed kitchen boasts a dining space, breakfast area, and is designed with entertaining in mind. Additional features include a utility area, a snug, and an attic conversion, providing ample space for flexible family living. There is a downstairs shower room for added convenience. The private garden is an attractive asset, complete with a garden bar, BBQ area, and beautifully decorated spaces for outdoor gatherings.

Local amenities are easily accessible with the Bulwark high street nearby, offering a range of shops, cafés, and services. Families will benefit from proximity to several reputable primary and secondary schools in the area. The neighbourhood is known for its community spirit and is situated near several green spaces, including the scenic Bulwark Park and the historic Chepstow Castle's picnic spots.

For commuters, public transport links are convenient with easy access to the M4 & M48

This terraced house is presented to a high standard and provides a comfortable base in a sought-after location, offering a balance of local amenities, notable schools, and excellent transport options.

Accommodation

Snug - 6' 6" x 16' 2" (1.98m x 4.93m)

Lounge - 14' 1" x 13' 4" (4.29m x 4.06m)

Kitchen/Diner - 21' x 10' 10" (6.40m x 3.30m)

Bedroom1 - 13' 5" x 12' 7" (4.09m x 3.84m)

Bedroom2 - 9' 3" x 14' 4" (2.82m x 4.37m)

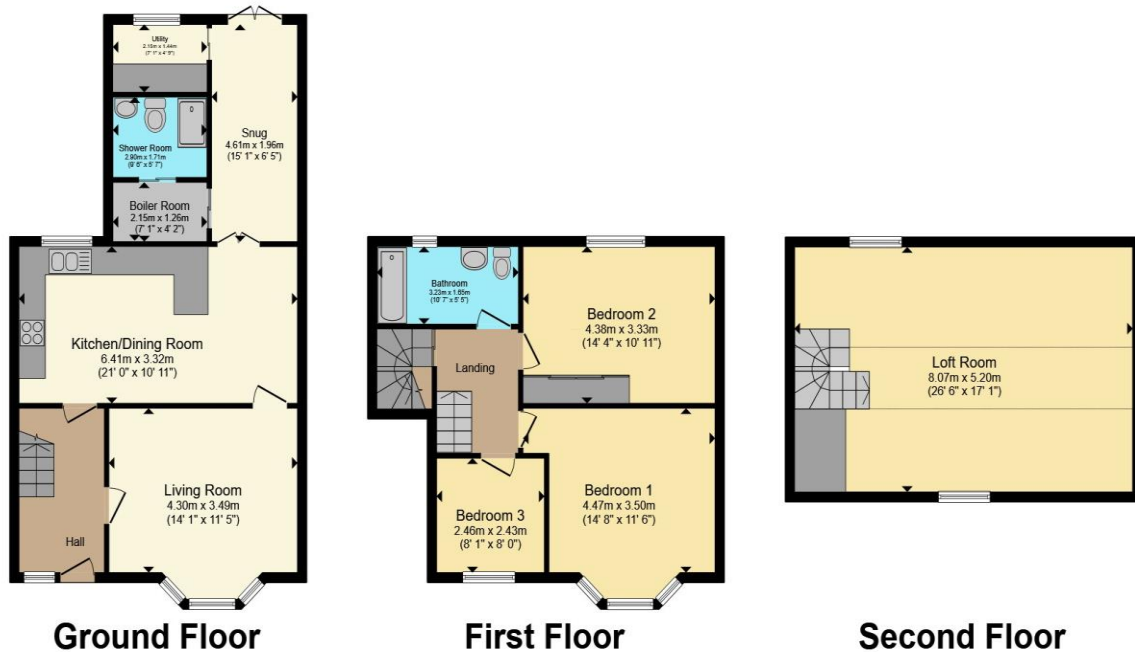
Bedroom3 - 8' 1" x 7' 11" (2.46m x 2.41m)

Bedroom4 - 21' x 6' (6.40m x 1.83m)

Bathroom



Floorplan



Total floor area 154.4 m² (1,662 sq.ft.) approx

This floor plan is for illustrative purposes only. It is not drawn to scale. Any measurements, floor areas (including any total floor area), openings and orientation are approximate. No details are guaranteed, they cannot be relied upon for any purpose and they do not form part of any agreement. No liability is taken for any error, omission or misstatement. A party must rely upon its own inspection(s). Powered by www.propertybox.io

Important Information

Note while we endeavour to make our sales details accurate and reliable, if there is any point which is of particular interest to you, please contact the office and we will be pleased to confirm the position for you. We have not personally tested any apparatus, equipment, fixtures, fittings or services and cannot verify they are in working order or fit for their purposes. Nothing in these particulars is intended to indicate that carpets or curtains, furnishings or fittings, electrical goods (whether wired or not). Gas fires or light fittings or any other fixtures not expressly included form part of the property offered for sale. This computer generated Floorplan, if applicable, is intended as a general guide to the layout and design of the property. It is not to scale and should not be relied upon for dimensions. Tenure: We cannot confirm the tenure of the property as we have not had access to the legal documents. The buyer is advised to obtain verification from their solicitor or surveyor.