



Fishermans Walk, £260,000

- Four spacious bedrooms
- parking
- Close to schools and local amenities
- Good public transport links
- Garden
- Ideal for families or investors
- EPC Rating: C
- Council Tax: D



 4  1  1



About the property

This impressive and spacious terraced house is offered for sale in Bulwark, and provides a practical opportunity for families, first time buyers, and investors. The property offers four bedrooms, reception room, a fully equipt kitchen, and one bathroom as well as downstairs W.C all maintained in good condition for immediate use. A garden and designated parking add convenience and outdoor space, enhancing day-to-day living. Situated in the sought-after Bulwark area, the property benefits from access to local amenities and several well-regarded schools are within easy reach

Public transport connections are favourable, with Chepstow Rail Station located approximately 1.5 miles away. This offers regular services to Cardiff, Newport, and Gloucester, with Cardiff accessible in around 40 minutes by train. Bus routes also serve the local community, making commuting and travel straightforward.

Residents can enjoy green spaces, with Bulwark Community Centre and play areas nearby, as well as the extensive Chepstow Park Wood for walking and outdoor activities. The property is well positioned for road access, with direct links to the M48, providing straightforward routes to Bristol and South Wales.

Accommodation

Kitchen 13' 1" x 10' 8" (3.99m x 3.25m)

Living Room 17' 8" x 13' 1" (5.38m x 3.99m)

W.C. 7' 3" x 2' 6" (2.21m x 0.76m)

Bedroom 1 12' 1" x 9' 6" (3.68m x 2.90m)

Bedroom 2 10' 8" x 6' 8" (3.25m x 2.03m)

Bedroom 3 10' 8" x 7' 9" (3.25m x 2.36m)

Bedroom 4 12' 9" x 6' 7" (3.89m x 2.01m)

Bathroom 6' 7" x 6' 3" (2.01m x 1.91m)

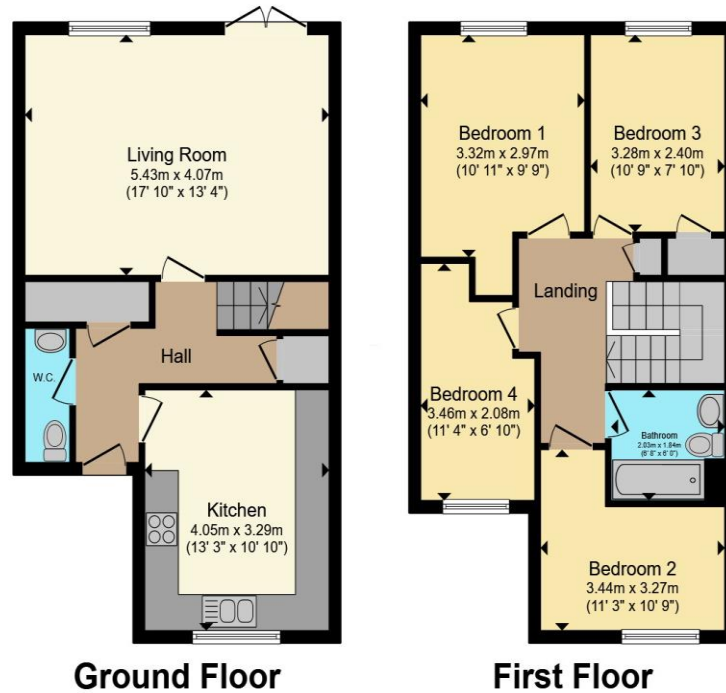


01291 630876

chepstow@peteralan.co.uk



Floorplan



Total floor area 96.9 m² (1,043 sq.ft.) approx

This floor plan is for illustrative purposes only. It is not drawn to scale. Any measurements, floor areas (including any total floor area), openings and orientation are approximate. No details are guaranteed, they cannot be relied upon for any purpose and they do not form part of any agreement. No liability is taken for any error, omission or misstatement. A party must rely upon its own inspection(s). Powered by www.propertybox.io



Important Information

Note while we endeavour to make our sales details accurate and reliable, if there is any point which is of particular interest to you, please contact the office and we will be pleased to confirm the position for you. We have not personally tested any apparatus, equipment, fixtures, fittings or services and cannot verify they are in working order or fit for their purposes. Nothing in these particulars is intended to indicate that carpets or curtains, furnishings or fittings, electrical goods (whether wired or not). Gas fires or light fittings or any other fixtures not expressly included form part of the property offered for sale. This computer generated Floorplan, if applicable, is intended as a general guide to the layout and design of the property. It is not to scale and should not be relied upon for dimensions. Tenure: We cannot confirm the tenure of the property as we have not had access to the legal documents. The buyer is advised to obtain verification from their solicitor or surveyor.

Peter Alan Limited is registered in England and Wales under company number 2073153, Registered Office is Cumbria House, 16-20 Hockliffe Street, Leighton Buzzard, Bedfordshire, LU7 1GN. VAT Registration Number is 500 2481 05. For activities relating to regulated mortgages and non-investment insurance contracts, Peter Alan Limited is an appointed representative of Connells Limited which is authorised and regulated by the Financial Conduct Authority. Connells Limited's Financial Services Register number is 302221. Most buy-to-let

