



## Kirrlach Close, offers in excess of £380,000

- Immaculate detached house
- Three double bedrooms
- Open-plan kitchen
- Excellent transport links
- EPC Rating: C
- Council Tax: F



 3  1  2





## About the property

This splendid property radiates an aura of sophistication and elegance, making it a perfect home for families. The house is generously proportioned, boasting three double bedrooms and two bathrooms. The bedrooms are spacious, providing ample room for relaxation and personal space. The bathrooms are similarly well-appointed, exuding a sense of luxury.

The heart of the home is the open-plan kitchen. The tastefully designed kitchen is a cook's dream with plenty of workspace. It is accompanied by two large reception rooms, offering a perfect setting for both entertaining guests and family gatherings. The property is set in a sought-after location, with excellent public transport links, desirable local schools, and local amenities within a short distance. This ensures that everything you need is within easy reach. The house also benefits from a council tax band F and an EPC rating of C, ensuring energy efficiency.

Adding to its inherent charm are unique features such as on-site parking, a single garage, and a garden. The garden provides a perfect blend of functionality and aesthetics, ideal for outdoor activities or simply enjoying the fresh air. In conclusion, this property offers an unbeatable combination of style, space, and convenience. Its impressive features and prime location make it a truly unique and desirable home, tailored to meet the needs of modern families.







## Accommodation

### Living Room

11' 2" x 21' 9" ( 3.40m x 6.63m )

### Dining Room

11' 2" x 11' 5" ( 3.40m x 3.48m )

### Kitchen

8' 5" x 10' 5" ( 2.57m x 3.17m )

### Garage/Workhop

9' 2" x 16' 3" ( 2.79m x 4.95m )

### Utility

9' 2" x 16' 3" ( 2.79m x 4.95m )

### Bedroom 1

9' 5" x 15' 4" ( 2.87m x 4.67m )

### Ensuite

7' 9" x 6' 2" ( 2.36m x 1.88m )

### Bedroom 2

11' 2" x 12' 1" ( 3.40m x 3.68m )

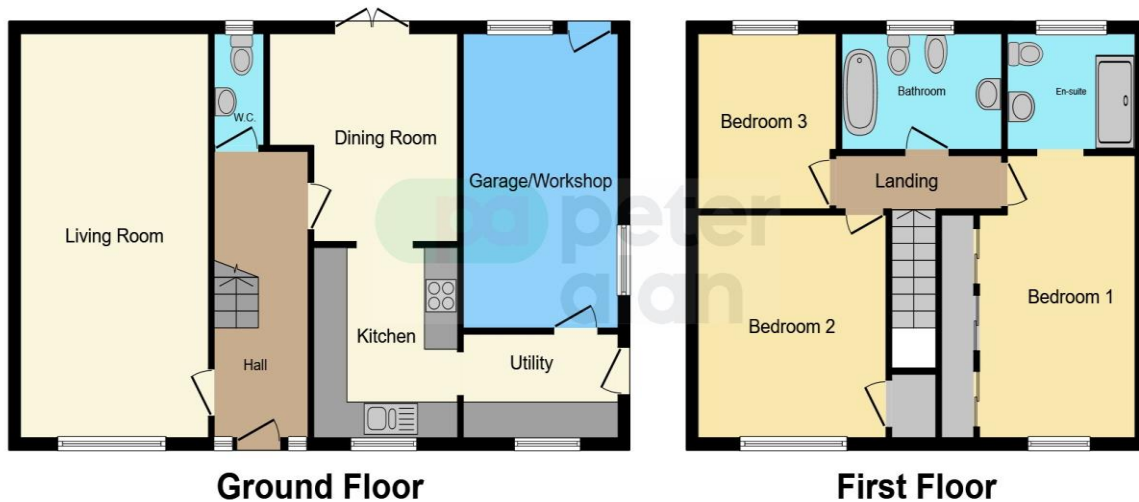
### Bedroom 3

8' 5" x 9' 5" ( 2.57m x 2.87m )

### Bathroom

9' 5" x 6' 2" ( 2.87m x 1.88m )

## Floorplan



This floor plan is for illustrative purposes only. It is not drawn to scale. Any measurements, floor areas (including any total floor area), openings and orientation are approximate. No details are guaranteed, they cannot be relied upon for any purpose and they do not form part of any agreement. No liability is taken for any error, omission or misstatement. A party must rely upon its own inspection(s). Powered by [www.focalagent.com](http://www.focalagent.com)

## Important Information

Note while we endeavour to make our sales details accurate and reliable, if there is any point which is of particular interest to you, please contact the office and we will be pleased to confirm the position for you. We have not personally tested any apparatus, equipment, fixtures, fittings or services and cannot verify they are in working order or fit for their purposes. Nothing in these particulars is intended to indicate that carpets or curtains, furnishings or fittings, electrical goods (whether wired or not), Gas fires or light fittings or any other fixtures not expressly included form part of the property offered for sale. This computer generated Floorplan, if applicable, is intended as a general guide to the layout and design of the property. It is not to scale and should not be relied upon for dimensions. Tenure: We cannot confirm the tenure of the property as we have not had access to the legal documents. The buyer is advised to obtain verification from their solicitor or surveyor.