



🛏 4 🛁 1 🛋 2

Dumpsie Dingle Tump Lane, Undy Caldicot

offers over £500,000

 **peter
alan**

01291 630876
chepstow@peteralan.co.uk



About the property

This immaculate detached house is currently listed for sale. It is a stunning four-bedroom property that boasts an array of unique features. The property is beautifully presented, with two spacious reception rooms, perfect for both entertaining and family living. The heart of the home is the well-equipped kitchen, an ideal space for cooking up a storm.

The house is served by one well-appointed bathroom. This property benefits from an EPC rating of C, indicating an average energy efficiency level, and falls within council tax band F.

One of the most striking features of this property is its outdoor spaces. It includes an abundant parking area, a lush garden, a decked sun lounge area and a wooden summer house which doubles as a bar. It's easy to envision summer evenings spent in these delightful outdoor areas, whether you're sipping a drink from the bar, or simply enjoying the tranquillity of the garden.

Inside, the log burner creates a cosy atmosphere during the cooler months, making this house a home for all seasons.

Located in a desirable area with excellent public transport links, this property is perfect for families, being in close proximity to local schools. A variety of local amenities are also within easy reach, adding to the convenience of this location.

Accommodation

Entrance Hallway

Kitchen/Diner

19' 6" x 15' 4" (5.94m x 4.67m)
Utility

9' 8" x 7' 3" (2.95m x 2.21m)
Living Room

19' 5" x 9' 10" (5.92m x 3.00m)
Bedroom 1

11' 11" x 12' 9" (3.63m x 3.89m)
Bedroom 2

9' 4" x 13' 7" (2.84m x 4.14m)
Bedroom 3

9' 4" x 13' 7" (2.84m x 4.14m)
Bedroom 4

6' 3" x 15' 4" (1.91m x 4.67m)

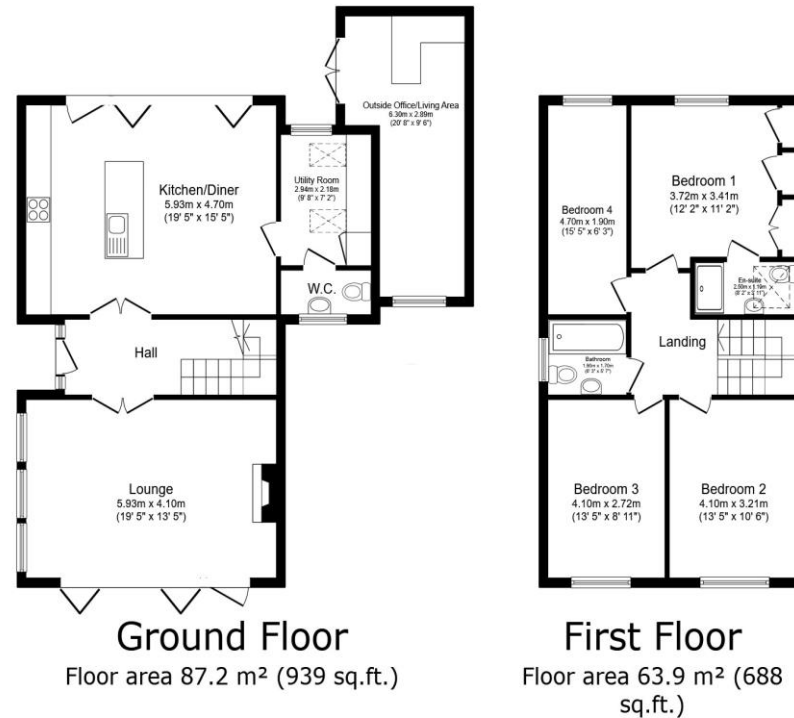






01291 630876

chepstow@peteralan.co.uk



TOTAL: 151.2 m² (1,627 sq.ft.)

This floor plan is for illustrative purposes only. It is not drawn to scale. Any measurements, floor areas (including any total floor area), openings and orientations are approximate. No details are guaranteed, they cannot be relied upon for any purpose and do not form any part of any agreement. No liability is taken for any error, omission or misstatement. A party must rely upon its own inspection(s). Powered by www.Propertybox.io

Important Information

Note while we endeavour to make our sales details accurate and reliable, if there is any point which is of particular interest to you, please contact the office and we will be pleased to confirm the position for you. We have not personally tested any apparatus, equipment, fixtures, fittings or services and cannot verify they are in working order or fit for their purposes. Nothing in these particulars is intended to indicate that carpets or curtains, furnishings or fittings, electrical goods (whether wired or not). Gas fires or light fittings or any other fixtures not expressly included form part of the property offered for sale. This computer generated Floorplan, if applicable, is intended as a general guide to the layout and design of the property. It is not to scale and should not be relied upon for dimensions. Tenure: We cannot confirm the tenure of the property as we have not had access to the legal documents. The buyer is advised to obtain verification from their solicitor or surveyor.

Peter Alan Limited is registered in England and Wales under company number 2073153, Registered Office is Cumbria House, 16-20 Hockliffe Street, Leighton Buzzard, Bedfordshire, LU7 1GN. VAT Registration Number is 500 2481 05. For activities relating to regulated mortgages and non-investment insurance contracts, Peter Alan Limited is an appointed representative of Connells Limited which is authorised and regulated by the Financial Conduct Authority. Connells Limited's Financial Services Register number is 302221. Most buy-to-let mortgages are not regulated.

