



The Dolkins Ash Tree

£255,000

- Semi Detached Family Home
- Three Bedrooms
- Ensuite to Master
- Parking for two vehicles
- Village Location
- Council Tax Band - D
- EPC Rating: C



3 2 1



About the property

We are delighted to present for sale this splendid three-bedroom semi-detached property. Complete with spacious living room, kitchen diner with French doors to the rear enclosed gardens, three bedrooms with ensuite to master and family bathroom. The property also benefits from two parking spaces.





Accommodation

Kitchen/Diner

15' 8" x 9' 4" (4.78m x 2.84m)

Living Room

15' 8" x 9' 10" (4.78m x 3.00m)

Downstairs Wc

6' 5" x 2' 10" (1.96m x 0.86m)

Bedroom One

12' 11" x 8' 8" (3.94m x 2.64m)

Ensuite

4' 2" x 6' 7" (1.27m x 2.01m)

Bedroom Two

9' 10" x 8' 9" (3.00m x 2.67m)

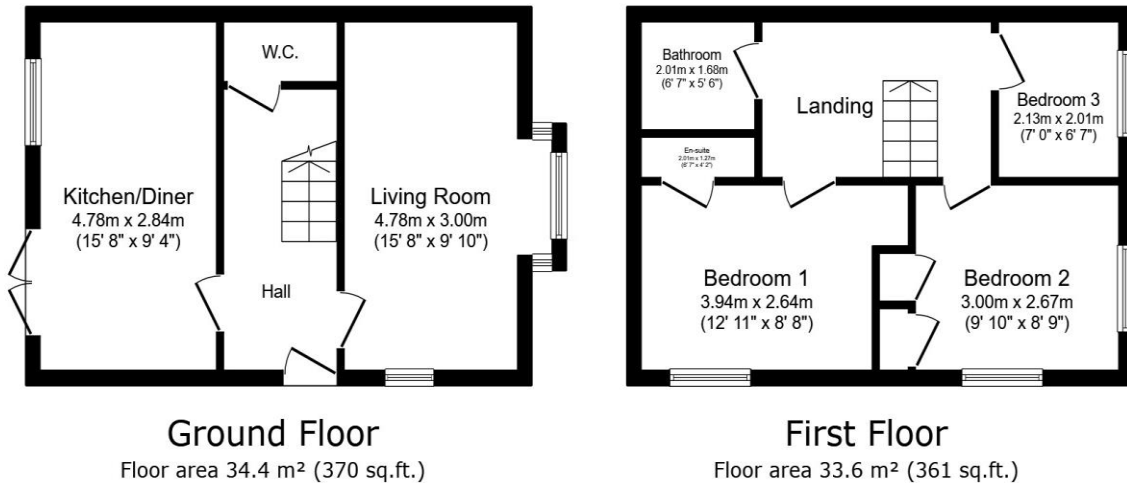
Bedroom Three

7' x 6' 7" (2.13m x 2.01m)

Bathroom

5' 6" x 6' 7" (1.68m x 2.01m)

Floorplan



TOTAL: 68.0 m² (732 sq.ft.)

This floor plan is for illustrative purposes only. It is not drawn to scale. Any measurements, floor areas (including any total floor area), openings and orientations are approximate. No details are guaranteed, they cannot be relied upon for any purpose and do not form any part of any agreement. No liability is taken for any error, omission or misstatement. A party must rely upon its own inspection(s). Powered by www.Propertybox.io

Important Information

Note while we endeavour to make our sales details accurate and reliable, if there is any point which is of particular interest to you, please contact the office and we will be pleased to confirm the position for you. We have not personally tested any apparatus, equipment, fixtures, fittings or services and cannot verify they are in working order or fit for their purposes. Nothing in these particulars is intended to indicate that carpets or curtains, furnishings or fittings, electrical goods (whether wired or not). Gas fires or light fittings or any other fixtures not expressly included form part of the property offered for sale. This computer generated Floorplan, if applicable, is intended as a general guide to the layout and design of the property. It is not to scale and should not be relied upon for dimensions. Tenure: We cannot confirm the tenure of the property as we have not had access to the legal documents. The buyer is advised to obtain verification from their solicitor or surveyor.

Peter Alan Limited is registered in England and Wales under company number 2073153, Registered Office is Cumbria House, 16-20 Hockliffe Street, Leighton Buzzard, Bedfordshire, LU7 1GN. VAT Registration Number is 500 2481 05. For activities relating to regulated mortgages and non-investment insurance contracts, Peter Alan Limited is an appointed representative of Connells Limited which is authorised and regulated by the Financial Conduct Authority. Connells Limited's Financial Services Register number is 302221. Most buy-to-let