



New Cut Road, Swansea

£135,000



 2
  2
  1

Leasehold

- City Center Location
- Allocated Parking
- Walking Distance To Shopping

- Walking Distance to Swansea Train Station
- Bathroom and En-suite

BELVOIR!

Property is personal

Email
swansea@belvoir.co.uk

Phone
01792 461 929

Description

Belvoir are pleased to present this 2 bed top floor apartment within walking distance to Swansea city center and train station.

Viewing is highly recommended!

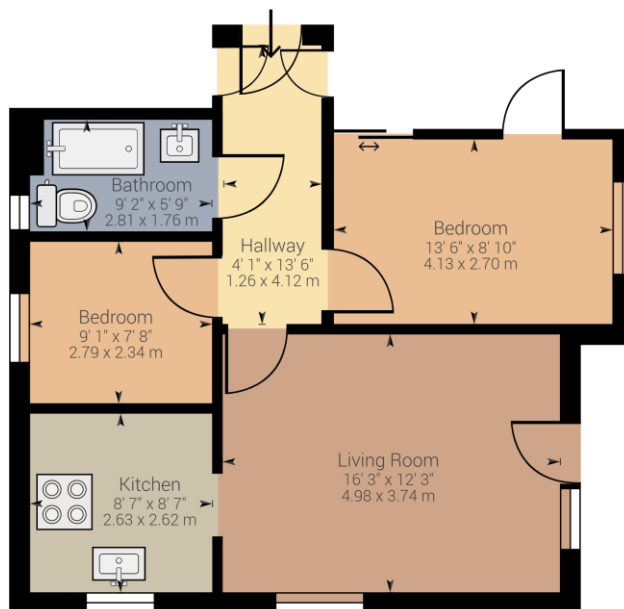
Disclaimer:

We would like to point out that all measurements, floor plans and photographs are for guidance purposes only (photographs may be taken with a wide angled/zoom lens), and dimensions, shapes and precise locations may differ to those set out in these sales particulars which are approximate and intended for guidance purposes only.

These particulars, whilst believed to be accurate are set out as a general outline only for guidance and do not constitute any part of an offer or contract. Intending purchasers should not rely on them as statements of representation of fact, but must satisfy themselves by inspection or otherwise as to their accuracy. No person in this firm's employment has the authority to make or give any representation or warranty in respect of the property.

Belvoir and our partners provide a range of services to buyers, although you are free to use an alternative provider. For more information simply speak to someone in our branch today. We can refer you on to The Mortgage Advice Bureau for help with finance. We may receive a fee of £250 (incl VAT), if you take out a mortgage through them. If you require a solicitor to handle your purchase, we can refer you on to a number of local solicitors. We do not receive a fee if you use their services.

Floorplan



While every attempt has been made to ensure accuracy, all measurements are approximate, not to scale. This floor plan is for illustrative purpose only and should be used as such by any prospective tenant or purchaser.

Powered by Giraffe360

Photographs



Map



Notes

[illegible]