



37 Littleworth

Wing, Leighton Buzzard, LU7 0JX

£1,050 PCM



2



1



1



D



WATSONS

LETTING SINCE 1961

37 Littleworth, Wing, Leighton Buzzard, LU7 0JX

Watsons are delighted to offer for let this two bedroom semi-detached cottage retaining many character features in the popular Village of Wing. The property has undergone full redecoration, and the accommodation comprises: Lounge with wooden floor and open fireplace, kitchen with appliances, and original character stove, ground floor shower room, garden room, stairs to first floor, two bedrooms (both with fitted wardrobes), low maintenance yard style garden, and allocated parking space. The property is offered Unfurnished, and is available immediately.



Lounge

11'9 (max) x 10'0
(3.58m (max) x 3.05m)

Kitchen

11'9 (max) x 9'11
(3.58m (max) x 3.02m)

Shower Room

Garden Room

9'6 x 6'11 (2.90m x
2.11m)

Stairs to First Floor

Bedroom One

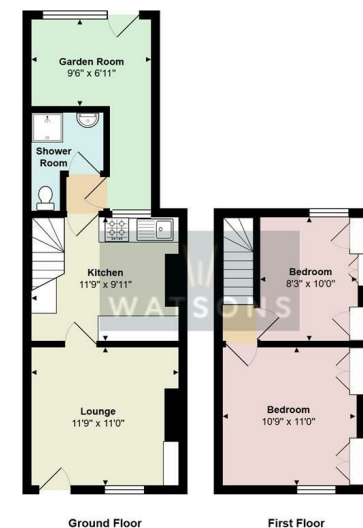
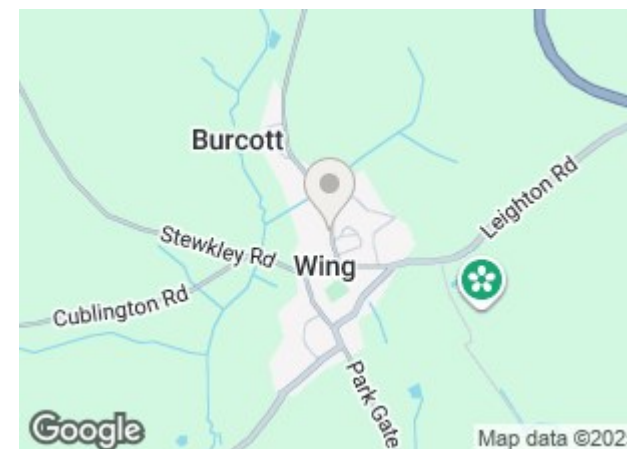
11'0 x 10'9 (max)
(3.35m x 3.28m (max))

Bedroom Two

10'0 x 8'3 (3.05m x
2.51m)

Rear Yard

Parking Space



Total Area: 654 ft²
All measurements are approximate and for display purposes only

Measurements and floor plans are approximate and for guidance only. Any prospective Tenant should check all measurements. Floor plan coverings and fitments are for example only and may not represent the true finish of the property.

17 - 21 Ropa Court, Leighton Buzzard, Bedfordshire, LU7 1DU
Tel: 01525 378309 Email: info@watsonslb.co.uk www.watsonslb.co.uk