



## 4 Langtry Court

Hockliffe Road, Leighton Buzzard, LU7 3FP

**£1,050 PCM**



2



2



1



C



# WATSONS

LETTING SINCE 1961

## 4 Langtry Court, Hockliffe Road, Leighton Buzzard, LU7 3FP

TWO BEDROOM FIRST FLOOR APARTMENT - RECENTLY REDECORATED - ENSUITE SHOWER TO MAIN BEDROOM - ALLOCATED PARKING SPACE WITHIN GATED PARKING AREA - CLOSE TO TOWN - Watsons are delighted to offer for a 12 month initial tenancy this two bedroom first floor apartment located within a short walk of the Town Centre. The property comprises; Communal entrance, entrance hallway, lounge, kitchen (with oven, hob, fridge freezer, dishwasher and washing machine), two bedrooms (master with ensuite) and bathroom. To the rear of the property is one allocated parking space. Further benefits include security entrance system and electric underfloor heating . The property is offered Unfurnished and is available early June.

EPC Rating - Band C

Council Tax - Band C



Entrance Hallway

Lounge/ Diner

15'10 x 11'4 (max)  
(4.83m x 3.45m (max))

Kitchen

10'0 (max) x 6'4 (max)  
(3.05m (max) x 1.93m (max))

Bedroom One  
(Irregular Shape)

16'9 (max) x 10'8 (max)  
(5.11m (max) x 3.25m (max))

En-suite Shower  
Room

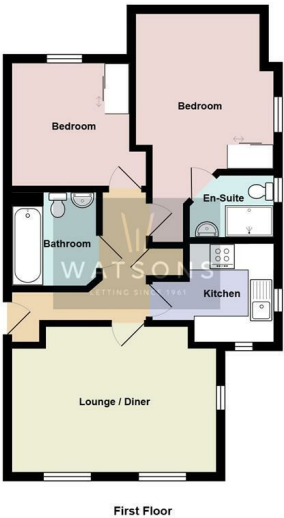
Bedroom Two

9'6 x 9'1 (2.90m x 2.77m)

Bathroom



Allocated Parking  
Space



Total Area: 633 ft² ... 58.8 m²  
All measurements are approximate and for display purposes only

Measurements and floor plans are approximate and for guidance only. Any prospective Tenant should check all measurements. Floor plan coverings and fitments are for example only and may not represent the true finish of the property.

17 - 21 Ropa Court, Leighton Buzzard, Bedfordshire, LU7 1DU  
Tel: info@watsonslb.co.uk Email: 01525 378309 www.watsonslb.co.uk