



## Langtry Court

Hockliffe Road, Leighton Buzzard, LU7 3FP

**£1,050 PCM**



  
**WATSONS**  
LETTING SINCE 1961



## Langtry Court

Hockliffe Road, Leighton Buzzard,  
LU7 3FP

TWO BEDROOM FIRST FLOOR  
APARTMENT - RECENTLY  
REDECORATED - ENSUITE SHOWER TO  
MAIN BEDROOM - ALLOCATED  
PARKING SPACE WITHIN GATED  
PARKING AREA - CLOSE TO TOWN -  
Watsons are delighted to offer for a 12  
month initial tenancy this two bedroom  
first floor apartment located within a short  
walk of the Town Centre. The property  
comprises; Communal entrance, entrance  
hallway, lounge, kitchen (with oven, hob,  
fridge freezer, dishwasher and washing  
machine), two bedrooms (master with  
ensuite) and bathroom. To the rear of the  
property is one allocated parking space.  
Further benefits include security entrance  
system and electric underfloor heating .  
The property is offered Unfurnished and is  
available early June.

EPC Rating - Band C

Council Tax - Band C

### Entrance Hallway

### Lounge/ Diner

15'10 x 11'4 (max) (4.83m x 3.45m (max))

### Kitchen

10'0 (max) x 6'4 (max) (3.05m (max) x  
1.93m (max))

### Bedroom One (Irregular Shape)

16'9 (max) x 10'8 (max) (5.11m (max) x  
3.25m (max))

### En-suite Shower Room

### Bedroom Two

9'6 x 9'1 (2.90m x 2.77m)

### Bathroom

### Allocated Parking Space

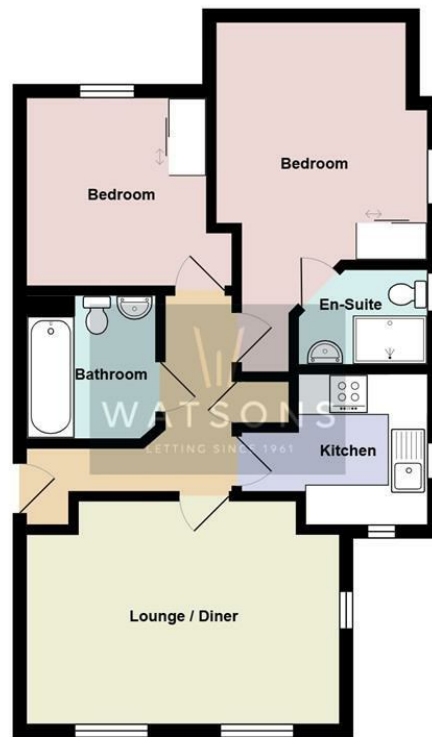






Measurements and floor plans are approximate and for guidance only. Any prospective Tenant should check all measurements. Floor plan coverings and fitments are for example only and may not represent the true finish of the property.

## Floor Plan



First Floor

Total Area: 633 ft² ... 58.8 m²

All measurements are approximate and for display purposes only

## Viewing

Please contact our Watsons Lettings Office on [info@watsonslb.co.uk](mailto:info@watsonslb.co.uk) if you wish to arrange a viewing appointment for this property or require further information.

17 - 21 Ropa Court, Leighton Buzzard, Bedfordshire, LU7 1DU  
Tel: [info@watsonslb.co.uk](mailto:info@watsonslb.co.uk) Email: 01525 378309 [www.watsonslb.co.uk](http://www.watsonslb.co.uk)