

24 Wheatfield Drive
Burton Latimer
NN15 5YL

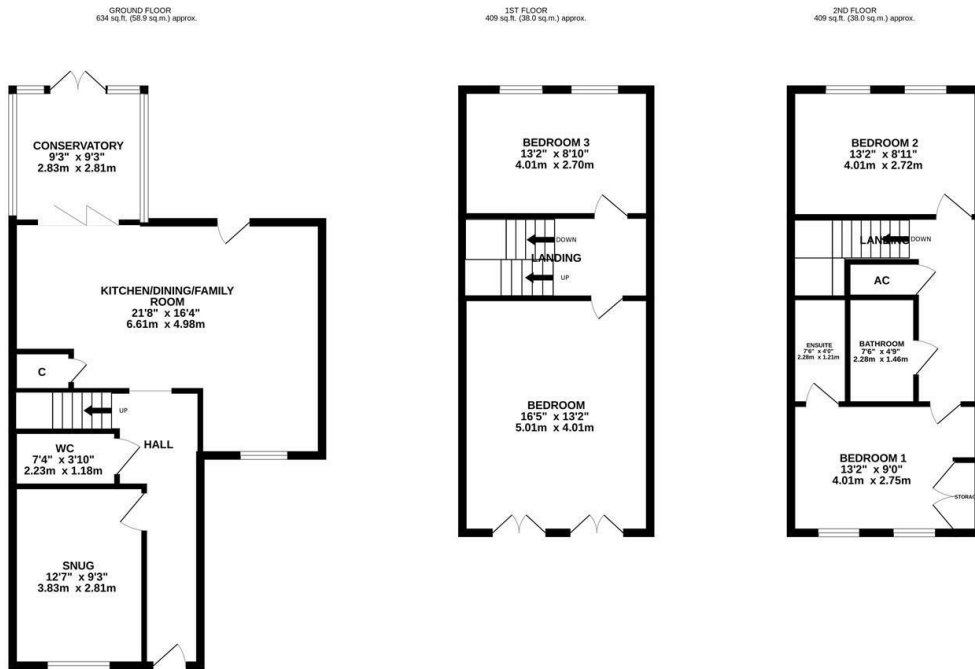
£280,000



OSCAR JAMES

...expect excellence

FLOOR PLANS



TOTAL FLOOR AREA: 1451 sq.ft. (134.8 sq.m.) approx.
 Whilst every attempt has been made to ensure the accuracy of the floorplans contained herein, measurements of doors, windows, rooms and any other items are approximate and no responsibility is taken for any error, omission or mis-statement. This plan is for illustrative purposes only and should be used as such by any prospective purchaser. The services, systems and appliances shown have not been tested and no guarantee as to their operability or efficiency can be given.
 Made with Metropro v20204



AT A GLANCE...



Three reception rooms



Modern fitted kitchen



Four double bedrooms



Ground floor WC, shower room and ensuite



Low maintenance garden



Driveway providing off road parking



WHAT'S GREAT?

Welcome to this charming four-bedroom townhouse, offering a perfect blend of contemporary design and comfortable living spaces. Situated in Burton Latimer, this residence provides convenience and elegance for modern living.

As you enter through the front door, you are greeted by an entrance hallway, with herringbone wooden flooring, leading to a light and airy kitchen/diner/family room, ideal for hosting gatherings or enjoying family meals. The kitchen boasts both base and eye level units, offering plenty of storage space for white goods. The open-plan layout ensures seamless interaction between cooking, dining, and relaxing areas. In addition, you will also find a conservatory providing access to the rear garden. Adjacent to the kitchen is a snug, a cosy space perfect for unwinding. Completing the ground floor is a convenient WC, providing essential facilities for guests and

residents alike.

To the first floor, you'll find two spacious double bedrooms and stairs rising to the second storey where you'll discover the tranquil haven of the master bedroom with its own ensuite shower room and a further double bedroom providing versatility for accommodating guests or creating a home office space. A well-appointed family bathroom completes the top floor, offering convenience and functionality for everyday living.

Outside offers a low-maintenance garden, providing a serene outdoor space for relaxation and alfresco dining with gated access to the front. Additionally, parking facilities ensure convenience for residents and visitors alike.

Call sole selling agents Oscar James to arrange your viewing appointment!

...expect excellence



SELLER'S SECRET

We love our kitchen/diner family room, its such a sociable space and the location of our house is great as its tucked away in a cul-de-sac but is so close to the centre of Burton Latimer. We are moving as we don't need as much space anymore and this house certainly offers a lot of it.



Why we like it....

This property is so spacious and versatile and the current owners have cared for it meticulously. With the accommodation spreading across three floors, all of the bedrooms are generous sizes and the location is perfect if you'd like a quiet spot with great access to amenities.

To buy or not to buy....

OSCAR JAMES

45 High Street | Burton Latimer | NN15 5LB
01536 722 222
www.oscar-james.com
