



10 Church View, Burton Latimer, Northamptonshire

OSCAR JAMES

# 10 Church View

Burton Latimer  
Northamptonshire  
NN15 5LG

- Detached family home. Located on the prestigious Church View in Burton Latimer.
- Occupying a corner plot with parking for multiple vehicles and attached garage
- Heavily extended kitchen/diner/family room
- Private landscaped garden. Low maintenance with water feature
- Immaculate condition
- Master suite complete with four-piece ensuite and dressing room
- Large utility shower room
- Cul de sac location



The true heart of the home lies in the heavily extended kitchen-dining-family room. This space is a culinary haven with a quadruple oven, a spacious dining area, a central island and a sunroom featuring oversized sliding doors that open to the landscaped garden. The sunroom doubles as a relaxing seating area, creating a seamless indoor-outdoor connection.

Adjacent to the kitchen, discover a large utility room with a convenient shower room and a dedicated study, catering to both practicality and modern living requirements.

**Welcome to this magnificent, detached property located on the prestigious Church View in Burton Latimer. Positioned on a corner plot, this expansive residence offers the epitome of luxury living, boasting off-road parking for multiple vehicles and a convenient garage.**

Upon entering, you are greeted by a stunning entrance hall that sets the tone for the elegance that permeates throughout the entire home. The dual-aspect lounge provides a perfect retreat, offering versatility and a great ambiance.





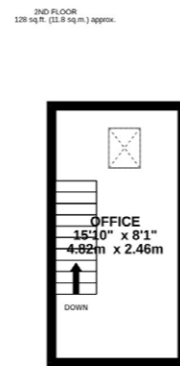
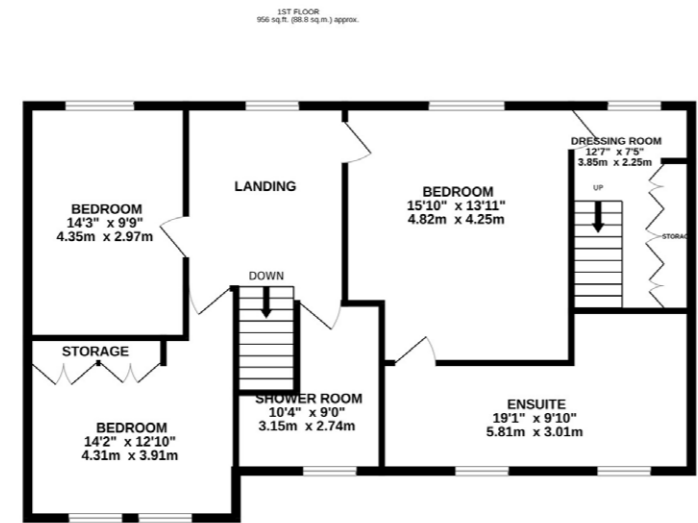
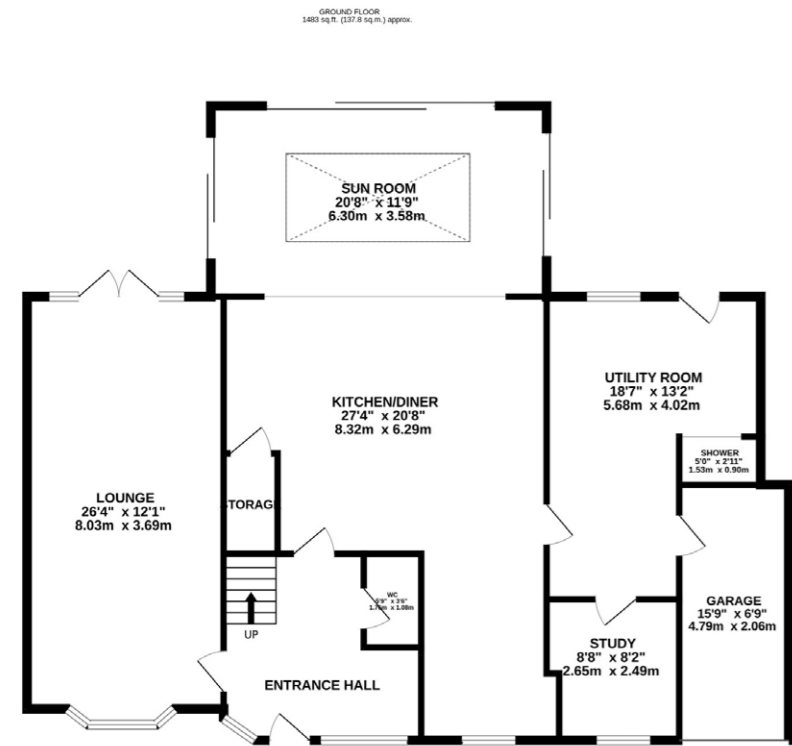
Heading upstairs, the property offers three generously sized double bedrooms, all providing comfort and space. The family shower room is tastefully appointed, ensuring both style and functionality.

The master suite is a true retreat, offering a generously sized bedroom and an ensuite bathroom that is nothing short of unbelievable. Fully tiled, featuring dual sinks, and equipped with a luxurious four-piece setup, the master ensuite is a testament to opulence. Adding to the allure, the master suite boasts a two-level dress room, providing ample storage and a touch of luxury.



4  
Bedrooms





TOTAL FLOOR AREA : 2567 sq.ft. (238.5 sq.m.) approx.

Whilst every attempt has been made to ensure the accuracy of the floorplan contained here, measurements of doors, windows, rooms and any other items are approximate and no responsibility is taken for any error, omission or mis-statement. This plan is for illustrative purposes only and should be used as such by any prospective purchaser. The services, systems and appliances shown have not been tested and no guarantee as to their operability or efficiency can be given.  
Made with Metropix ©2024



Step outside to the thoughtfully landscaped garden, designed for low maintenance and enjoyment. Multiple seating areas invite you to relax and entertain, while a water feature adds a touch of tranquillity to this outdoor oasis.

This property on Church View is not just a house; it's a statement of luxury living in Burton Latimer. With its spacious interiors, high-end features, and meticulously designed garden, this home presents a rare opportunity for those seeking elegance and comfort in every detail. Don't miss the chance to call this remarkable property your own.



# OSCAR JAMES

E S T A T E   A G E N T S



45 High Street, Burton Latimer, Northants, NN15 5LB

T: 01536 722 222 E: [burton@oscar-james.com](mailto:burton@oscar-james.com)

[www.oscar-james.com](http://www.oscar-james.com)