



12 Jacques Road,
Burton Latimer, NN15 5GJ

OSCAR JAMES

ESTATE AGENTS

Offers Over £425,000

The Property in Brief...

One word ... LUXURY!!

This absolutely gorgeous four bedroomed detached property is nestled in a quiet cul-de-sac surrounded by countryside in Burton Latimer, close to all the local amenities and excellent transport links.

Burton Latimer is a small market town that has lots to offer, including two award winning restaurants, public library, hair and beauty salons and great schooling.

This house was built in 2019 and is approximately 1425 sq.ft. so it offers a huge amount of space, and the current owners have meticulously cared for and upgraded the house during their time here.

The downstairs accommodation comprises; large entrance hall, useful WC, large kitchen/diner with integral appliances, separate utility and Bi fold doors out to the garden, and the generous lounge with secret storage/office space.

Upstairs there's a large landing space with four double bedrooms leading off it, the master bedroom has a stunning ensuite shower room and the immaculate family bathroom completes this space.

Outside is a very low maintenance and secure rear garden with newly installed gates making it exceptionally private, and there is also an integral garage with parking.

Do not miss out on this stunning home, give Oscar James a call today if you would like to book a viewing.



Dimensions

Kitchen/Diner

20'4" x 10'3" (6.20 x 3.12)

Lounge

20'4" x 11'2" (6.20 x 3.40)

Garage

15'8" x 9'0" (4.78 x 2.74)

Bedroom 1

14'11" x 13'2" (4.55 x 4.01)

Ensuite

7'2" x 6'7" (2.18 x 2.01)

Bathroom

9'6" x 7'2" (2.90 x 2.18)

Bedroom 2

11'7" x 10'0" (3.53 x 3.05)

Bedroom 3

14'3" x 12'5" (4.34 x 3.78)

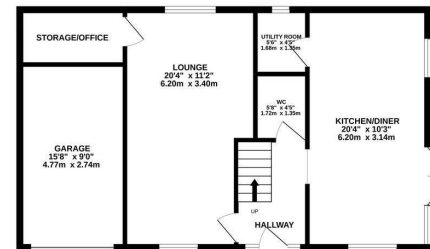
Bedroom 4

13'8" x 9'9" (4.17 x 2.97)

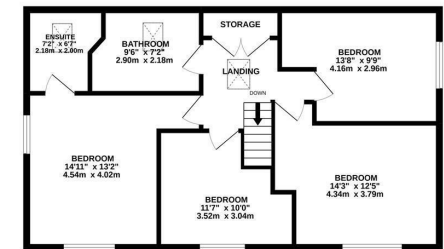
What our vendors say...

We bought this house from new and really love the area, it is great for families and we love having so much space for all of our children to be able to play. Burton Latimer is great for families and the cul-de-sac is very peaceful, we love being so close to the countryside too.

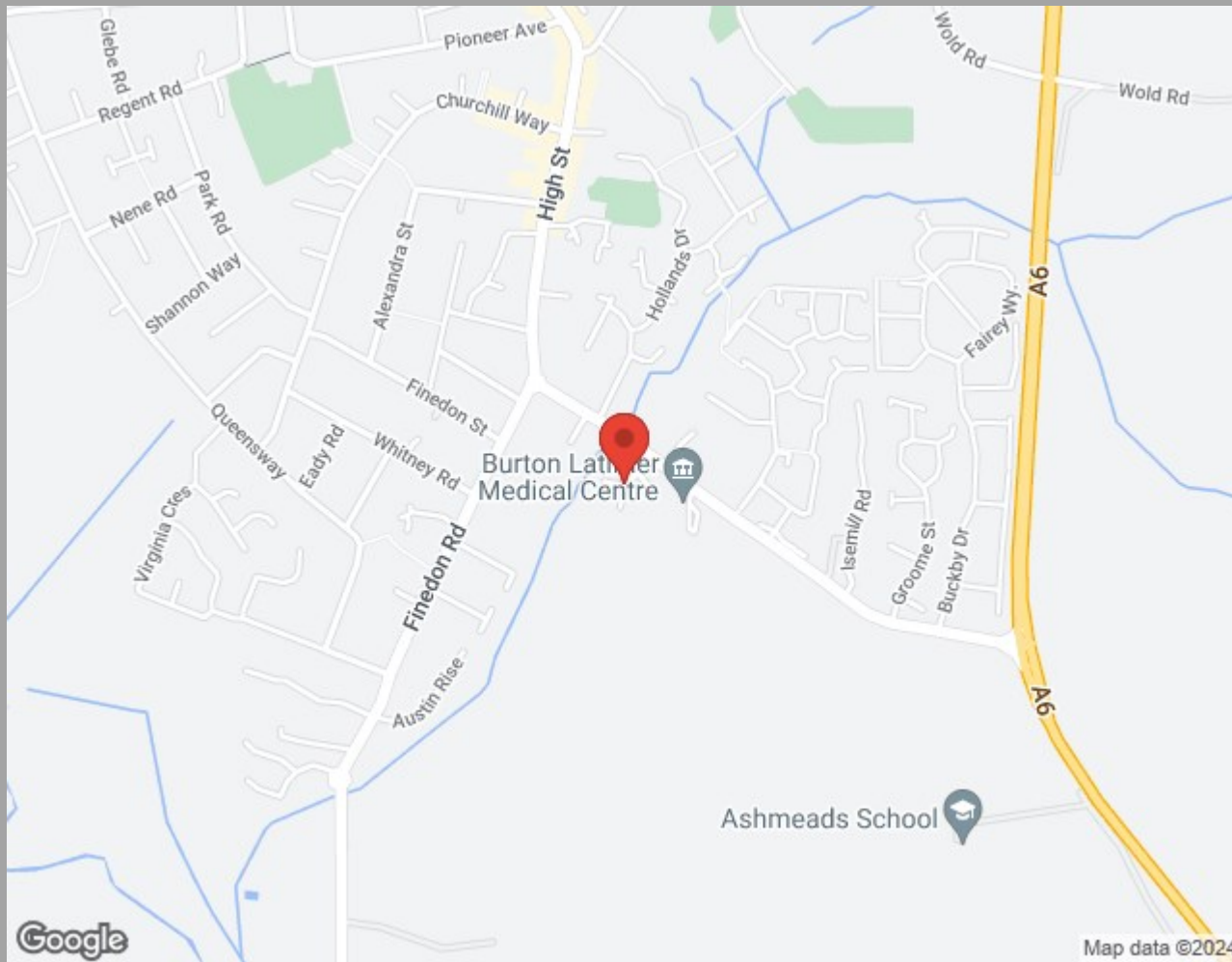
GROUND FLOOR
709 sq.ft. (65.8 sq.m.) approx.



1ST FLOOR
717 sq.ft. (66.6 sq.m.) approx.



TOTAL FLOOR AREA: 1425 sq.ft. (132.4 sq.m.) approx.
Whilst every attempt has been made to ensure the accuracy of the footprint contained here, measurements of doors, windows, rooms and any other items are approximate and no responsibility is taken for any error, omission or mis-statement. This plan is for illustrative purposes only and should be used as such by any prospective purchaser. The services, systems and appliances shown have not been tested and no guarantee as to their operability or efficiency can be given.
Made with Metropac ©2022



Find us at;
45 High Street
Burton Latimer, NN15 5LB

01536 722 222
burton@oscar-james.com
www.oscar-james.com
Follow us on Facebook

Whilst every attempt has been made to ensure the accuracy of the floor plan and details contained here, measurements of doors, windows, rooms and any other items are approximate and no responsibility is taken for any error, omission, or mis-statement. This plan is for illustrative purposes only and should be used as such by any prospective purchaser. The services, systems and appliances shown have not been tested and have no guarantee as to their operability or efficiency can be given. Floor plan made with Metropix 2014. Fixtures and fittings may vary at point of sale.