

Croyland Mews
Corby
NN17 5ES

£975 Per Month

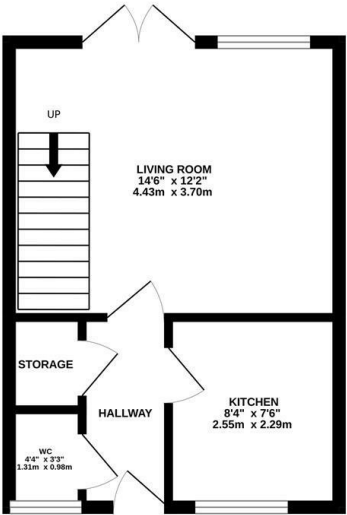


OSCAR JAMES

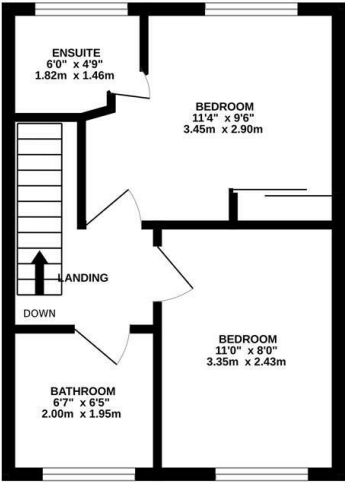
...expect excellence

FLOOR PLANS

GROUND FLOOR
298 sq.ft. (27.7 sq.m.) approx.



1ST FLOOR
298 sq.ft. (27.7 sq.m.) approx.



TOTAL FLOOR AREA : 596 sq.ft. (55.4 sq.m.) approx.
Whilst every attempt has been made to ensure the accuracy of the floorplan contained herein, measurements of doors, windows, rooms and any other items are approximate and no responsibility is taken for any error, omission or mis-statement. This plan is for illustrative purposes only and should be used as such by any prospective purchaser. The services, systems and appliances shown have not been tested and no guarantee as to their operability or efficiency can be given.
Made with Metropix 12/2025



AT A GLANCE...



custom text 1



custom text 4



custom text 2



custom text 5



custom text 3



custom text 6



WHAT'S GREAT?

Oscar James are pleased to offer to the market this beautifully presented, two bedroom home which is situated in the sought after Priors Hall Park development.

The property briefly comprises entrance hall, kitchen and large lounge with patio doors leading into the garden.

To the first floor, expect to find two double bedrooms with en suite to the master, and a family bathroom.

To the rear you will find a low maintenance garden with wooden shed.

Council tax band B
EPC rating C

Offered to the market unfurnished and available NOW

...expect excellence



SELLER'S SECRET



Why we like it....

OSCAR JAMES

1 Newland Street | Kettering | NN16 8JH
01536 415777
www.oscar-james.com

To buy or not to buy....
