

Flat 1 Regents Court
Linden Avenue
Kettering
NN15 7NP

£90,000

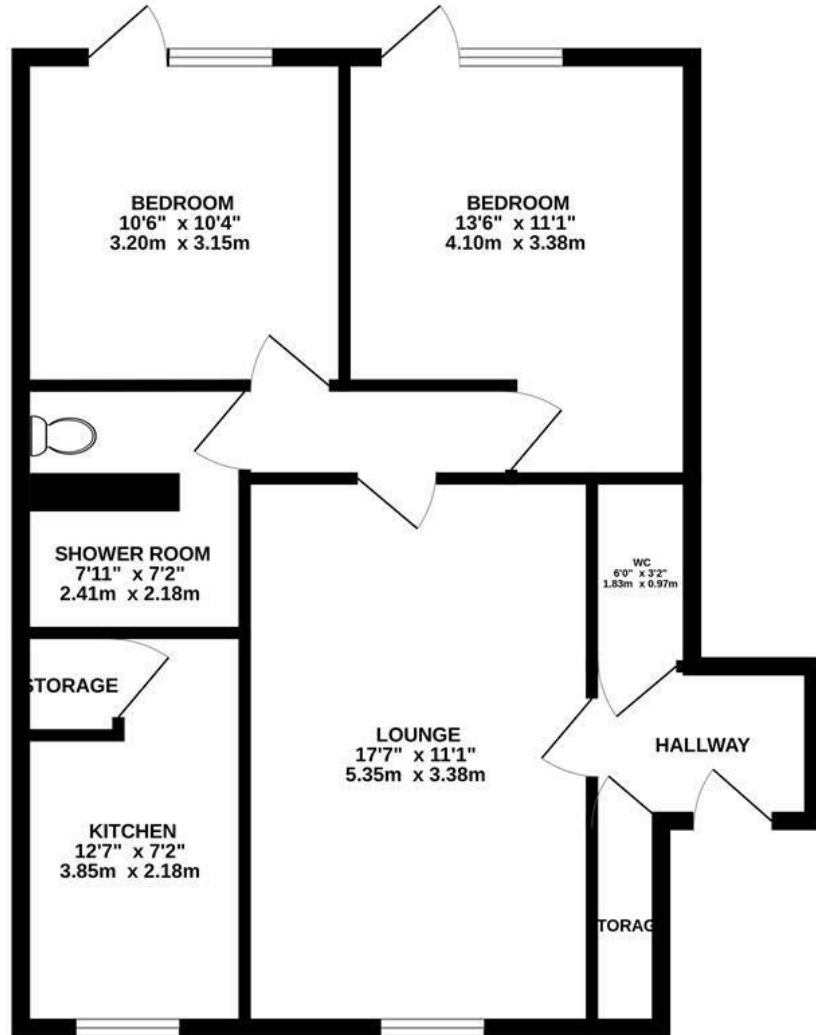


OSCAR JAMES

...expect excellence

FLOOR PLANS

GROUND FLOOR
672 sq.ft. (62.4 sq.m.) approx.



TOTAL FLOOR AREA : 672 sq.ft. (62.4 sq.m.) approx.

Whilst every attempt has been made to ensure the accuracy of the floorplan contained here, measurements of doors, windows, rooms and any other items are approximate and no responsibility is taken for any error, omission or mis-statement. This plan is for illustrative purposes only and should be used as such by any prospective purchaser. The services, systems and appliances shown have not been tested and no guarantee as to their operability or efficiency can be given.
Made with Metropix ©2024



AT A GLANCE...



Generous lounge



Fitted kitchen



Two double bedrooms



Wet room with WC and second WC



Residents parking available



WHAT'S GREAT?

In need of modernisation and CASH BUYERS ONLY.. This two bedroom GROUND FLOOR apartment is offered to market with NO CHAIN and is an excellent size overall and is situated ideally for local shops and amenities.

The accommodation comprises of an entrance hall, cloakroom, two double bedrooms, a large lounge and good size kitchen with storage cupboard as well as a wet/shower room with second WC.

Outside there is a car park for providing parking for residents.

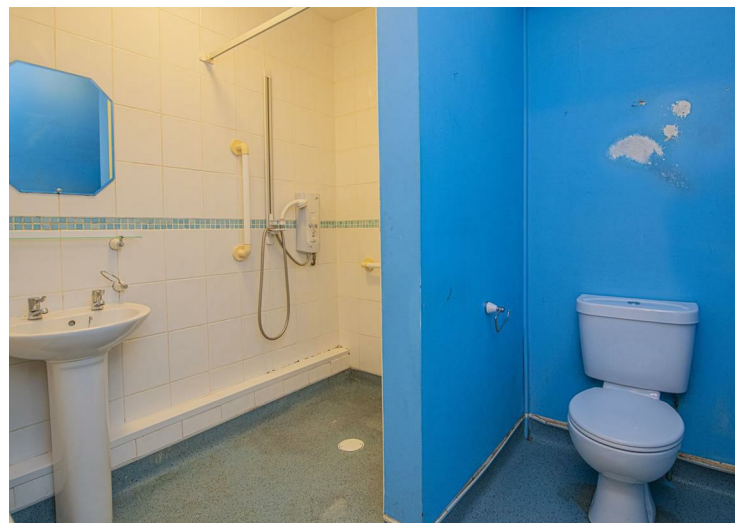
Call sole selling agents Oscar James Kettering to make arrangements to view.

...expect excellence



SELLER'S SECRET

As a deceased estate the property is being sold with no chain.



Why we like it....

As much as there is work required this flat is a superb size, ground floor and located ideally for people needing amenities close by.

OSCAR JAMES

1 Newland Street | Kettering | NN16 8JH

01536 415777

www.oscar-james.com

To buy or not to buy....
