

Cupar Crescent
Corby
NN17 1RF

£1,150 Per Month

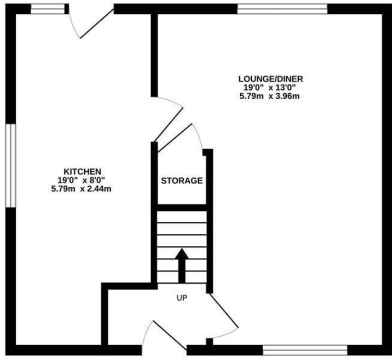


OSCAR JAMES

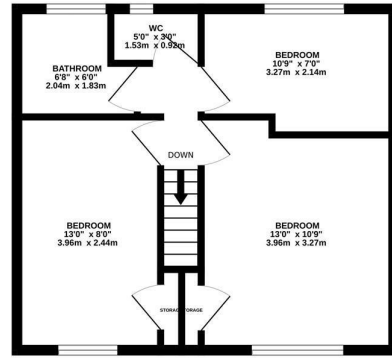
...expect excellence

FLOOR PLANS

GROUND FLOOR
399 sq.ft. (37.0 sq.m.) approx.



1ST FLOOR
399 sq.ft. (37.0 sq.m.) approx.



TOTAL FLOOR AREA: 797 sq.ft. (74.1 sq.m.) approx.

Whilst every attempt has been made to ensure the accuracy of the floorplan contained here, measurements of doors, windows, rooms and any other items are approximate and no responsibility is taken for any error, omission or mis-statement. This plan is for illustrative purposes only and should be used as such by any prospective purchaser. The services, systems and appliances shown have not been tested and no guarantee as to their operability or efficiency can be given.
Made with Metropix ©2024



AT A GLANCE...



custom text 1



custom text 4



custom text 2



custom text 5



custom text 3



custom text 6



WHAT'S GREAT?

Nestled on a quiet road near Corby town center, Oscar James Estate Agents are excited to welcome this three-bedroom semi-detached home to the rental market!

The property boasts off road parking for 2/3 cars to the front and is located only a short walk from the town.

Downstairs, you will find a cosy entrance hall, a large lounge/diner to the front with dual aspect and kitchen with masses of storage and space for washing machine and dryer.

To the first floor are three DOUBLE bedrooms and a family bathroom with shower over bath and a separate WC.

The rear garden is generous in size and offers a patio area plus a large lawn.

Offered to the market part furnished and available EARLY AUGUST

EPC D

Council Tax A

...expect excellence



SELLER'S SECRET



Why we like it....

To buy or not to buy....

OSCAR JAMES

1 Newland Street | Kettering | NN16 8JH
01536 415777
www.oscar-james.com
