

10 Glyndebourne Gardens
Corby
Northamptonshire
NN18 0PZ

£1,200 Per Month

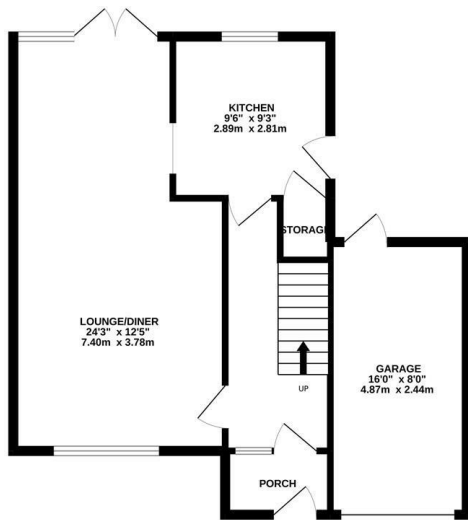


OSCAR JAMES

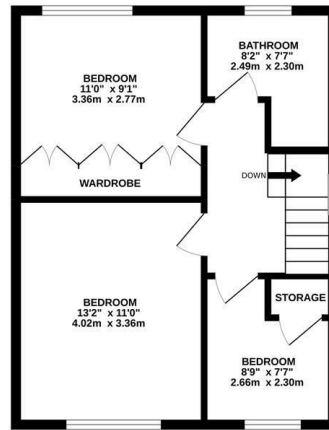
...expect excellence

FLOOR PLANS

GROUND FLOOR
601 sq.ft. (55.8 sq.m.) approx.



1ST FLOOR
450 sq.ft. (41.8 sq.m.) approx.



TOTAL FLOOR AREA: 1052 sq.ft. (97.7 sq.m.) approx.

Whilst every attempt has been made to ensure the accuracy of the floorplan contained here, measurements of doors, windows, rooms and any other items are approximate and no responsibility is taken for any error, omission or mis-statement. This plan is for illustrative purposes only and should be used as such by any prospective purchaser. The services, systems and appliances shown have not been tested and no guarantee as to their operability or efficiency can be given.
Made with Metropix ©2022



AT A GLANCE...



custom text 1



custom text 4



custom text 2



custom text 5



custom text 3



custom text 6



WHAT'S GREAT?

Beautiful three bedroom family home on the sought after Glyndebourne Gardens.

The property briefly comprises, large hallway, bright and airy lounge diner with log burner and French doors to the rear garden.

The fitted kitchen is contemporary in design and décor with integrated fridge.

To the first floor are three bedrooms, two of which are double in size and the family bathroom with shower over bath.

The rear garden is mostly laid to lawn with a generous patio area too. Outdoor storage and a garage complete this offering and it **MUST BE VIEWED TO BE APPRECIATED**

EPC C
Council tax B

...expect excellence



SELLER'S SECRET



Why we like it....

OSCAR JAMES

1 Newland Street | Kettering | NN16 8JH

01536 415777

www.oscar-james.com

To buy or not to buy....
