

6
Ise Court French Drive
Kettering
Northamptonshire
NN15 5FB

£850 Per Month

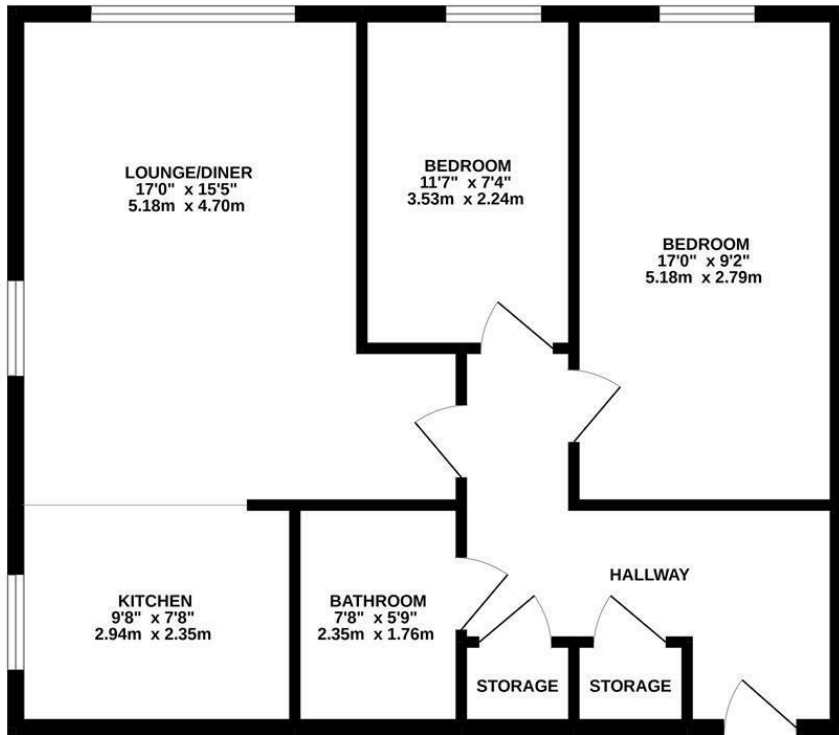


OSCAR JAMES

...expect excellence

FLOOR PLANS

GROUND FLOOR
703 sq.ft. (65.3 sq.m.) approx.



TOTAL FLOOR AREA: 703 sq ft. (65.3 sq m.) approx.
Whilst every attempt has been made to ensure the accuracy of the floorplan contained here, measurements of doors, windows, rooms and any other items are approximate and no responsibility is taken for any error, omission or mis-statement. This plan is for illustrative purposes only and should be used as such by any prospective purchaser. The services, systems and appliances shown have not been tested and no guarantee as to their operability or efficiency can be given.
Made with Metropix ©2022



AT A GLANCE...



custom text 1



custom text 4



custom text 2



custom text 5



custom text 3



custom text 6



WHAT'S GREAT?

Fabulous two bedroom apartment on Ise Lodge Kettering

This first floor apartment is light, airy and spacious throughout. With open plan living / kitchen, two double bedrooms and bathroom with shower over bath.

Allocated parking for one vehicle and ample on street parking for visitors or second car

Offered to the market unfurnished and available mid JUNE

MUST BE SEEN

NO PETS
EPC D
Council tax A

...expect excellence



SELLER'S SECRET



Why we like it....

OSCAR JAMES

1 Newland Street | Kettering | NN16 8JH
01536 415777
www.oscar-james.com

To buy or not to buy....
