

## Residential Development Opportunity

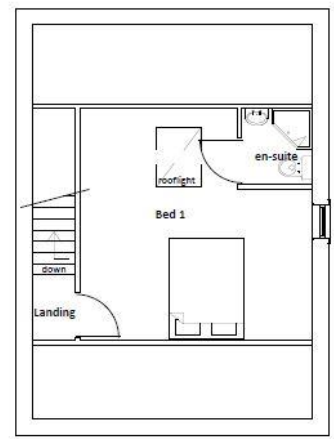
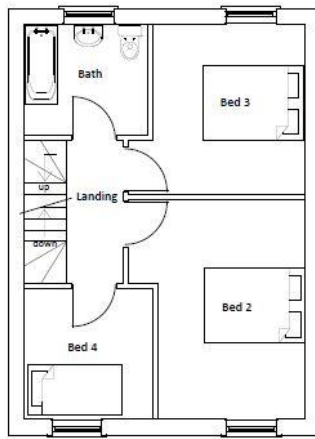
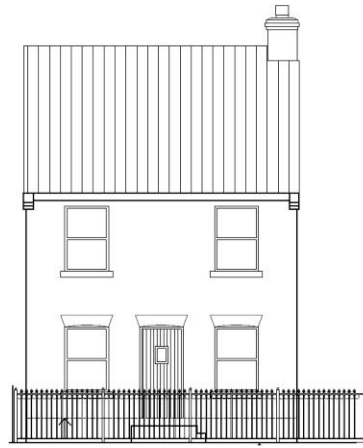
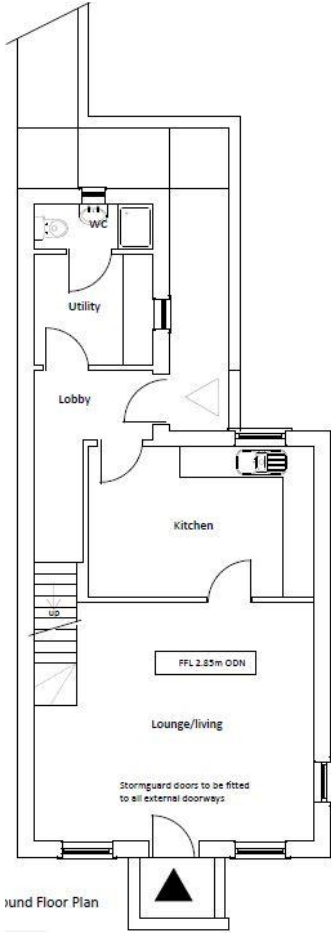
Land Off Robin Hoods Walk, PE21 9EP **Asking Price £240,000**

- Planning permission for the construction of 5 properties comprising: 2 pairs of three bedroom semi-detached houses and a detached three storey four bedroom house.
- **Planning Reference Number B/17/0041**
- Walking Distance of Central Park, Local Schools and Town Centre Amenities
- Existing Garages May Continue as Rentals During Initial Stages of Development, Prior To Demolition

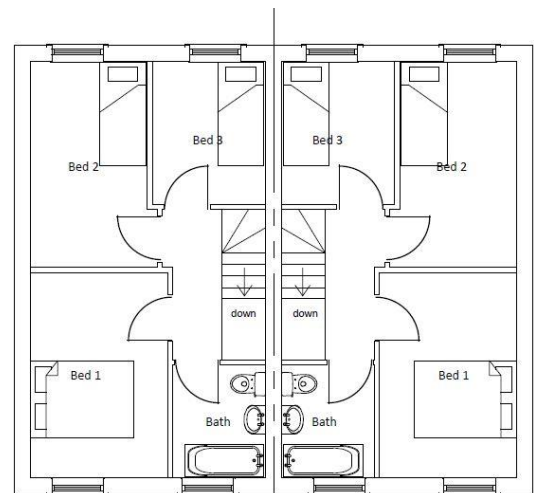
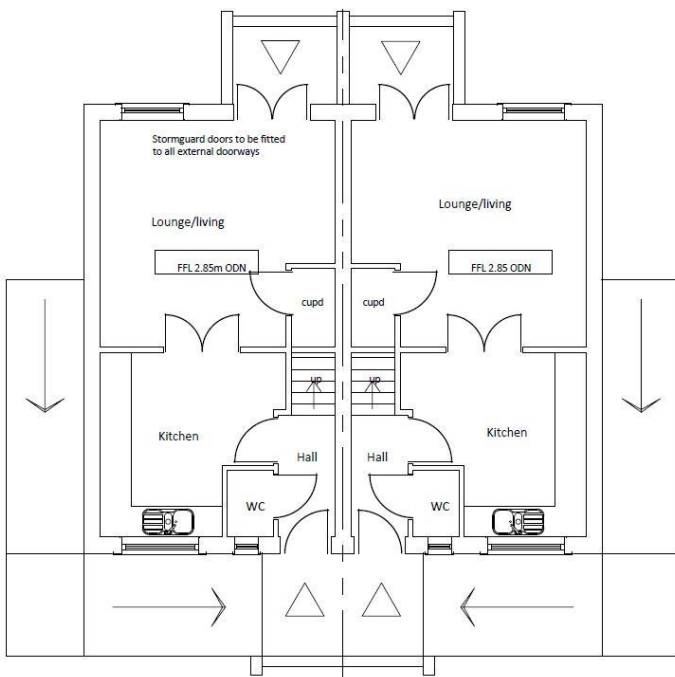




## Proposed House Type 1



## Proposed House Type 2



Proposed First Floor Plan



Note: All measurements are approximate. The services, fixtures and fittings have not been tested by the Agent. All properties are offered subject to contract or formal lease.

Fairweather Estate Agents Limited, for themselves and for Sellers and Lessors of this property whose Agent they are, give notice that:- 1) These particulars, whilst believed to be accurate, are set out as a general outline only for guidance and do not constitute any part of any offer or contract; 2) All descriptions, dimensions, reference to condition and necessary permissions for use and occupation, and other details are given without responsibility and any intending Buyers or Tenants should not rely on them as statements or representations of fact but must satisfy themselves by inspection or otherwise as to their accuracy; 3) No person in this employment of Fairweather Estate Agents Limited has any authority to make or give any representation or warranty whatsoever in relation to this property.



22 Dolphin Lane, Boston  
Lincolnshire PE21 6EU

T | 01205 336122

E | sales@fairweather-estateagents.co.uk

