



Situated on a country lane on the outskirts of the town, this three bedroom property enjoys far-reaching views over neighbouring fields to two aspects and an extensive rear garden in the region of a third of an acre.

The accommodation itself includes a lovely modern bathroom, lounge with wood-burning stove and a country cottage style dining kitchen leading to a sunroom, plus three good size bedrooms to the first floor.

Outside there is gravel parking for several vehicles with a lawned garden and further lawn to the side - which could potentially also be used as needed. For buyers working to a restrictive timeframe the property also has the benefit of being offered with no onward chain.

The village of Wyberton lies just south-west of Boston, off the A16, so conveniently positioned for travelling to Spalding/Peterborough or toward Kings Lynn and the north-Norfolk coast. Frampton Marsh Nature Reserve in the neighbouring village is also only a short drive away.

- Well-Presented Three Bedroom Semi-Detached House
- Situated On a Country Lane On The Outskirts Of Town
- Neighbouring Open Views & An Extensive Rear Garden
- Lounge With Wood-burning Stove, Country-Cottage Style Dining Kitchen
- Sun Room and Updated Modern Bathroom
- Parking For Several Vehicles
- uPVC Double Glazing, Gas-Fired Central Heating
- Tenure: Freehold. EPC 'E 42'. Council Tax 'A'
- No Onward Chain





Entrance – Via canopy porch with uPVC front door into the:

Entrance Hall

With staircase to the first floor and doors arranged off to:

Lounge 15' x 12' (4.57m x 3.67m)

Having a uPVC window overlooking the front, wood-burning stove with sleeper-style mantle and tiled hearth, three wall-lights, radiator, recently replaced carpet and understairs storage cupboard.

Dining Kitchen 18'4 x 8'11 (5.60m x 2.72m)

The kitchen includes a generous range of cupboard and drawers, with wooden work-surface over and an inset double-bowl sink with mixer tap. Integral wine rack, four ring hob with splashback, extractor canopy and oven below. Spaces for washing machine and dishwasher, uPVC window overlooking the garden and a uPVC door to the Sun room.

Sun Room/ Garden Room 14'10 x 6'9 (4.52m x 2.05m)

The sunroom enjoys considerable privacy and has uPVC sliding doors leading out to the garden.

Bathroom

The bathroom comprises a lovely white suite of panel bath with Mira shower and shower screen, a vanity suite with sink, concealed-flush WC and cupboards below. Heated towel rail, extractor fan and wall tiling.

First Floor Landing – doors are arranged off the landing to:

Bedroom One 15'2 x 10'3 (4.63m x 3.13m)

A generous double bedroom, bedroom one has radiator, over stairs cupboard and enjoys far-reaching open views over neighbouring fields.

Bedroom Two 10'11 x 9'7 (3.32m x 2.92m)

Also a double bedroom having uPVC window to the rear overlooking the garden. Built-in cupboard with shelving. Radiator.

Bedroom Three 8'6 x 7'9 (2.58m x 2.37m)

With uPVC window to the side and radiator.

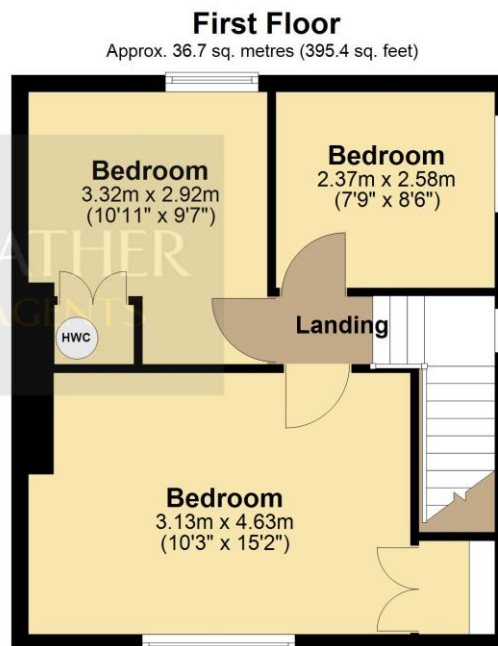
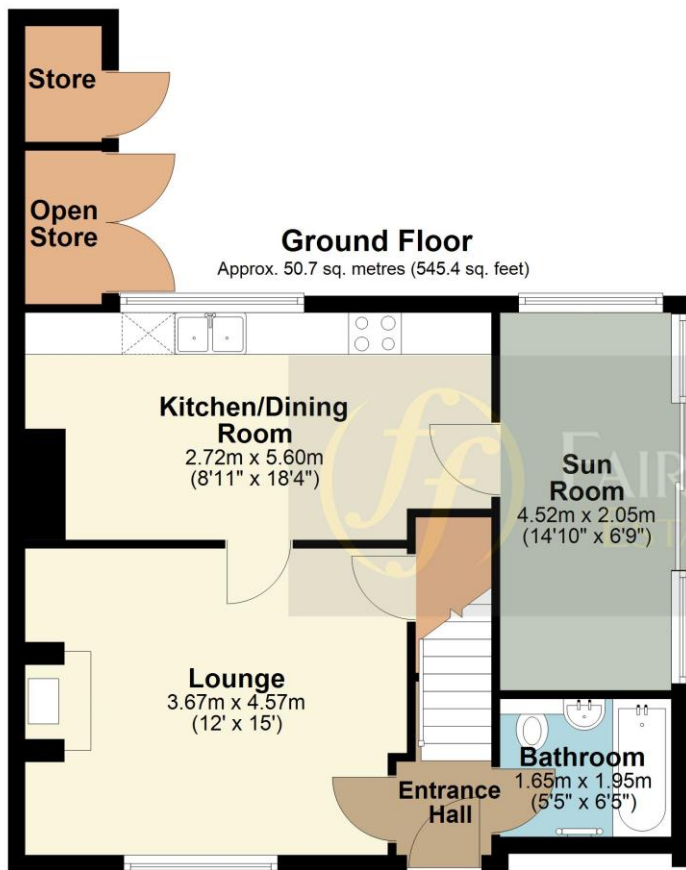
Outside

The property is approached over a gravel driveway with a lawned garden and a further grass space to the right hand side. The rear garden can be accessed through a hand gate from the driveway or via the sun room, which leads to an initial patio area with summerhouse, with further storage to the immediate rear of the property by way of two attached brick built stores. This area leads to the main garden which as mentioned will be a highlight for many viewers particularly with children or pets – a superb vast lawn interspersed with trees and bordered to sides by neighbouring fields.









Total area: approx. 87.4 sq. metres (940.8 sq. feet)

All images used are for illustrative purposes. Images are for guidance only and may not necessarily represent a true and accurate depiction of the condition of property. Floor plans are intended to give an indication of the layout only. All images, floor plans and dimensions are not intended to form part any contract.
Plan produced using PlanUp.

NOTE: All measurements are approximate and should be used as a guide only. None of the services connected, fixtures or fittings have been verified or tested by the Agent and as such cannot be relied upon without further investigation by the buyer.

All properties are offered subject to contract. Fairweather Estate Agents Limited, for themselves and for Sellers of this property whose Agent they are, give notice that:- 1) These particulars, whilst believed to be accurate, are set out as a general outline only for guidance and do not constitute any part of any offer or contract; 2) All descriptions, dimensions, reference to condition and necessary permissions for use and occupation, and other details are given without responsibility and any intending Buyers should not rely on them as statements or representations of fact but must satisfy themselves by inspection or otherwise as to their accuracy; 3) No person in this employment of Fairweather Estate Agents Limited has any authority to make or give any representation or warranty whatsoever in relation to this property.

