







4 Finchwell Rise

Handsworth • Sheffield • S13 9DS

Guide Price £210,000 - £220,000

A beautifully presented and modern three-bedroom end-terrace home, ideally positioned on a popular residential rise in Handsworth. Offering contemporary styling throughout, this property boasts a welcoming layout, a private rear garden, and the added benefit of a driveway for 1–2 vehicles making it perfect for first-time buyers, young families, or professionals. Upon entering, the entrance hallway provides access to a convenient cloakroom/WC before leading through to the cosy, front-facing living room. This inviting space enjoys a warm and homely feel, enhanced by a contemporary media wall, tasteful panelling and soft carpeting. To the rear of the property, overlooking the garden, is the impressive open-plan dining kitchen. The dining area is carpeted for comfort and flows naturally into the modern kitchen, fitted with sleek gloss-white units, contrasting worktops, an integrated oven, gas hob and extractor. There is also space and plumbing for further appliances, and French doors open out onto the garden, filling the room with natural light. The first floor offers two well-presented double bedrooms along with a versatile third bedroom/study, complete with generous built-in storage. A stylish family bathroom completes the floor, featuring a modern three-piece white suite, an over-bath shower, built-in vanity storage and contemporary partial tiling. Externally, the property continues to impress. The front features a neat lawn with wrought-iron railings, creating a strong first impression alongside the private driveway. To the rear is a fully enclosed garden, comprising a lawned area and a raised, generous decked terrace ideal for outdoor dining, entertaining, or enjoying summer evenings. Handsworth is a popular and well-established suburb of Sheffield, offering an excellent blend of everyday convenience and community feel. The area provides a great range of local shops, supermarkets, schools and green spaces, along with easy access to bus routes and major road links for commuting into the city and beyond. Handsworth is ideal for families, first-time buyers and professionals alike.





- Modern End Terrace
- Popular Residential Rise in Handsworth
- 3 Bedrooms & Modern Bathroom
- Light & Airy Dining Kitchen
- Cosy Living Room

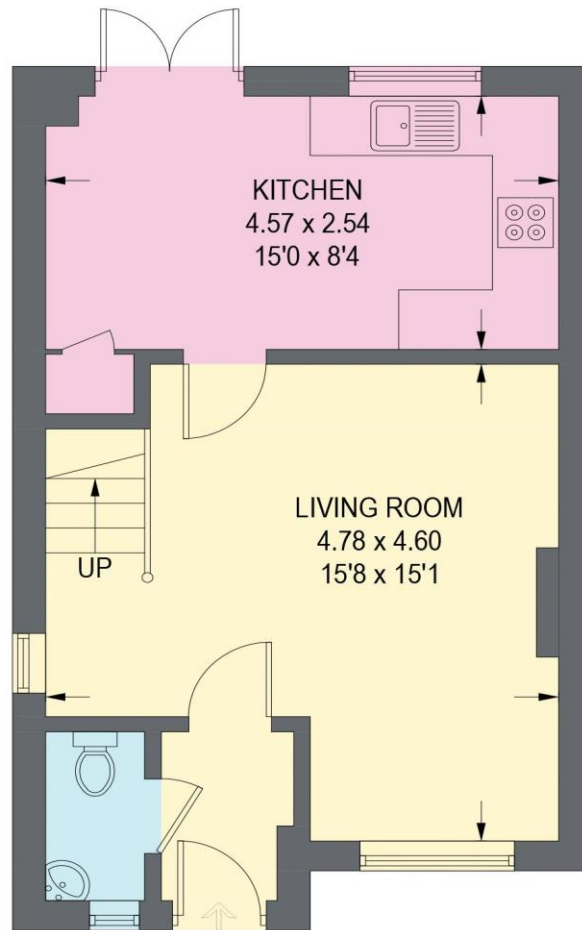
- Excellent Local Amenities & Transport Links
- Enclosed Rear Garden & Decked Terrace
- Off Street Parking for 1-2 Vehicles
- Leasehold 145 years from 2018 £185pa
- Council Tax Band B, EPC Rating C



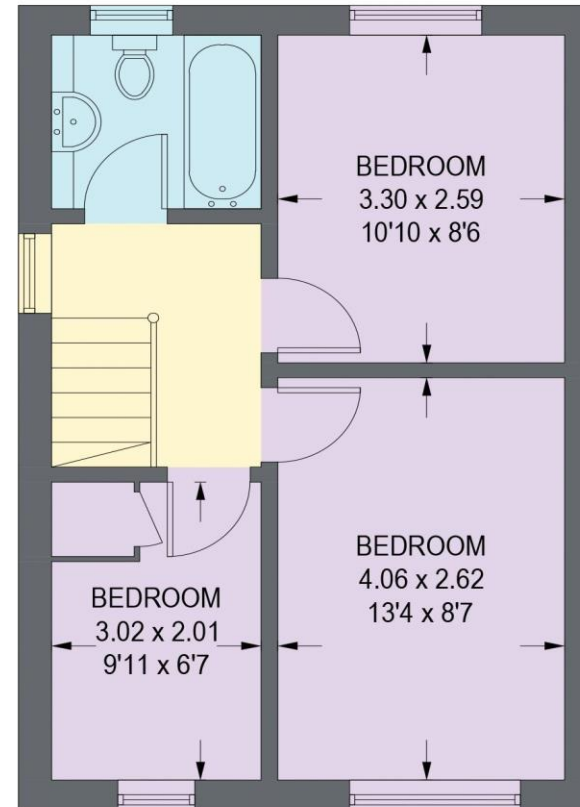


4 FINCHWELL RISE

APPROXIMATE GROSS INTERNAL AREA = 71.4 SQ M / 769 SQ FT



IN
GROUND FLOOR
36.5 SQ M / 393 SQ FT



FIRST FLOOR
34.9 SQ M / 376 SQ FT

Illustration for identification purposes only,
measurements are approximate, not to scale. (ID1262223)



haus

West Bar House, 137 West Bar, Sheffield, S3 8PU
hello@haushomes.co.uk haushomes.co.uk

0114 276 8868