





8 Northwood

Wadsley Park Village • Sheffield • S6 1RZ

£240,000

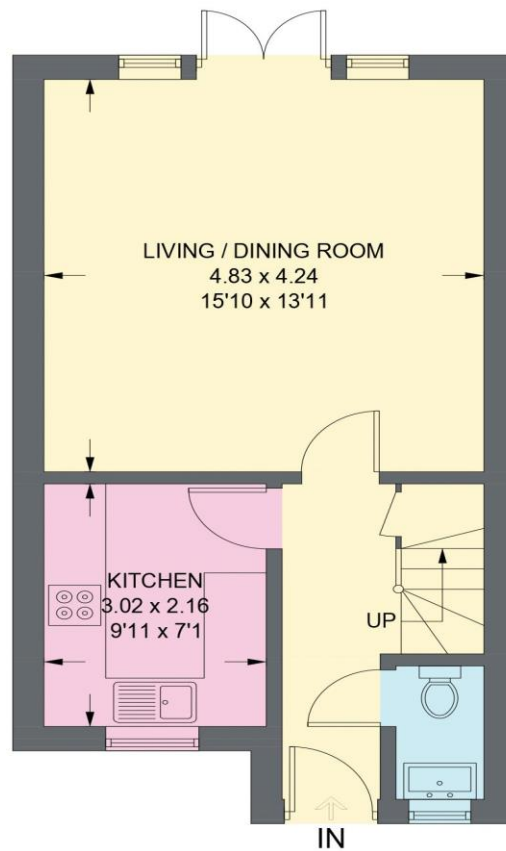
Asking Price £240,000 Situated in a sought-after residential location within the popular Wadsley Park Village, this modern freehold property forms part of a lovely development known for its leafy green spaces and convenient access to the Supertram. Offering comfortable, modern, light and airy accommodation throughout, it represents an ideal home for a range of buyers. A welcoming entrance hallway leads into the home, providing access to the WC/cloakroom and a useful understairs storage cupboard. The recently installed modern high-gloss kitchen features complementary worktops, tiled splashbacks and a full suite of integrated appliances, including an oven, induction hob, fridge-freezer, dishwasher and washing machine. To the rear, the light and airy open-plan living/dining area offers excellent versatility, finished in neutral décor, with French doors opening directly onto the garden. Upstairs, the spacious main bedroom is positioned at the front of the property and enjoys two windows and built-in storage cupboards. At the rear are two further well-proportioned bedrooms overlooking the garden, both styled in a neutral palette with fitted carpets. The contemporary family bathroom, fitted earlier this year, includes a white suite, stylish tiling, a shower over the bath and a heated towel rail. The landing also provides access to a partially boarded loft space that houses the combination boiler. Externally, the enclosed rear garden is designed for low maintenance and includes a rear gate leading to the private residents' parking area, where the property benefits from one allocated parking space. Wadsley Park Village is a highly sought-after modern residential development in northwest Sheffield, known for its peaceful atmosphere, leafy green spaces and well-kept surroundings. The area offers excellent transport links, including convenient Supertram access, and is close to local shops, parks, schools and woodland walks. Popular with families and professionals alike, it provides a welcoming community feel with a blend of modern homes and easy access to both Hillsborough amenities and open countryside.



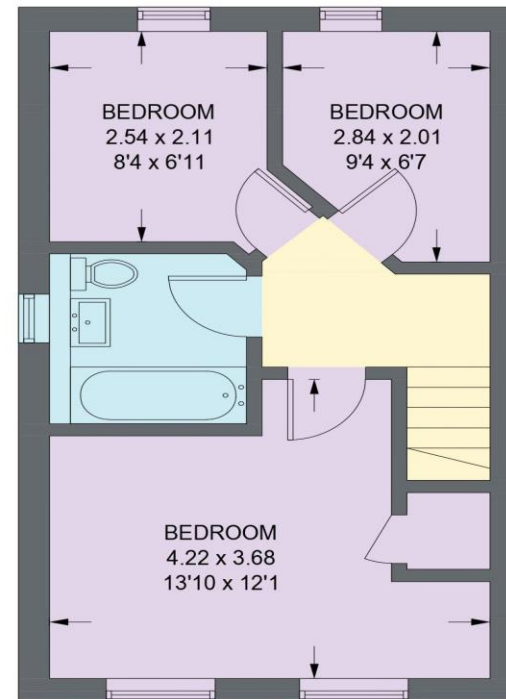
- Modern Home in Sought-After Wadsley Park Village
- 3 Bedrooms
- Light and Airy Open-Plan living Dining Area
- Contemporary Bathroom
- Stylish Kitchen with Integrated Appliances
- Close to Super Tram Park & Ride
- Allocated Resident Parking
- Neutral Decor Throughout
- Freehold

8 NORTHWOOD

APPROXIMATE GROSS INTERNAL AREA = 70.1 SQ M / 754 SQ FT



GROUND FLOOR
36.1 SQ M / 388 SQ FT



FIRST FLOOR
34.0 SQ M / 366 SQ FT

Illustration for identification purposes only,
measurements are approximate, not to scale. (ID1260386)

IMPORTANT: we would like to inform prospective purchasers that these sales particulars have been prepared as a general guide only. A detailed survey has not been carried out, nor the services, appliances and fittings tested. Room sizes should not be relied upon for furnishing purposes and are approximate. If floor plans are included, they are for guidance only and illustration purposes only and may not be to scale. If there are any important matters likely to affect your decision to buy, please contact us before viewing the property.