











## 12 St Albans Close

Fulwood • Sheffield • S10 4DJ

Asking Price £650,000

Tucked away at the end of a peaceful cul-de-sac in sought-after Fulwood (S10), this stunning four-bedroom family home has been significantly extended, reconfigured, and renovated to an exceptionally high standard. The result is a beautifully designed, contemporary property offering generous and versatile living space, perfect for modern family life. The welcoming entrance hallway, complete with cloakroom storage and engineered oak flooring, leads through to the heart of the home, an impressive open-plan kitchen, dining, and family area. The kitchen features stylish two-tone units, Corian worktops, a central island with breakfast seating, a Franke boiling-water tap, and integrated appliances including a full-size fridge and freezer, Neff oven, and combination microwave. Bifold doors open seamlessly to the landscaped garden and raised terrace, allowing the space to flow naturally into the outdoors and showcasing stunning far-reaching views. This versatile area offers ample space for dining and relaxing, ideal for family life and entertaining. A separate utility room adjoins the kitchen, alongside a flexible additional room that could serve as a gym, playroom, or study. A hidden sliding door leads into a cosy living room, complete with a media wall and contemporary log-effect fire, providing a comfortable retreat for quieter moments. Upstairs, the principal bedroom suite boasts patio doors opening onto a glass Juliet balcony, creating a seamless connection to the views, along with a dressing area and a modern en-suite shower room. There are two further double bedrooms, a smaller fourth bedroom, and a stylishly tiled family bathroom with a contemporary white suite, including a freestanding bathtub. Externally, the property benefits from a driveway with an EV charger and secure gated access. The landscaped wraparound garden includes outdoor storage, a level lawn, and a raised decked terrace, making it the perfect space to relax and enjoy the idyllic scenery. Fulwood is one of Sheffield's most sought-after suburbs, known for its quiet, leafy streets, excellent schools, and strong community feel. The area combines peaceful family living with convenient access to the city centre, local shops, cafes, and green spaces, including walking routes and parks. Highly popular with families, Fulwood offers a perfect blend of amenity, schooling, and scenic surroundings.









- Extended Detached Family Home
- Cul-de-Sac Location in Sought-After Fulwood (S10)
- 4 Bedrooms, Family Bathroom & Ensuite
- Impressive Open Plan Family Space
- Stylish Modern Decor Throughout
- Excellent Schools in Catchment
- Stunning Far-Reaching Views
- Driveway & EV Charger
- Freehold
- Council Tax Band D, EPC Rating TBC







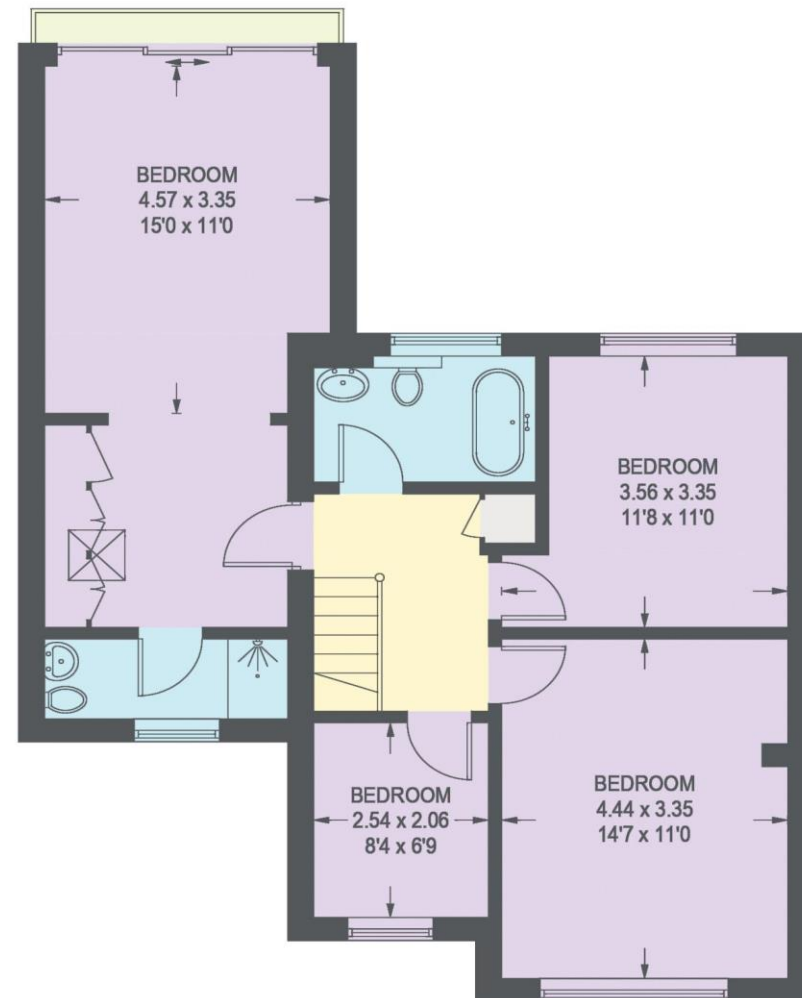


# 12 ST ALBANS CLOSE

APPROXIMATE GROSS INTERNAL AREA = 160.5 SQ M / 1728 SQ FT



**GROUND FLOOR**  
**88.9 SQ M / 957 SQ FT**



**FIRST FLOOR**  
**71.6 SQ M / 771 SQ FT**

Illustration for identification purposes only, measurements are approximate, not to scale.





**haus**

West Bar House, 137 West Bar, Sheffield, S3 8PU  
[hello@haushomes.co.uk](mailto:hello@haushomes.co.uk) [haushomes.co.uk](https://haushomes.co.uk)

0114 276 8868