







59 Main Road

Marsh Lane • Sheffield • S21 5RH

Guide Price £250,000 - £270,000

A beautifully presented, 3 bedroom semi detached house in Marsh Lane, S21 with a spacious living room, dining kitchen, modern bathroom, stunning views from all aspects, gardens front and rear, long driveway for multiple vehicles and detached garage. No Chain. Freehold. The side uPVC entrance door opens into the entrance lobby with front facing window, solid oak flooring, a useful coat hanging/shoe storage space and an intruder alarm. An oak door opens into the bright and airy, generous, living room with neutral decor and cream carpet. From the living room a further oak door opens into the dining kitchen which has a fantastic range of white base and wall units, solid wooden work surfaces, solid oak flooring, integrated Siemens appliances including an induction hob with extractor fan above, electric oven, steam oven, dishwasher, under counter fridge and freezer, Smeg washing machine and sink with Quooker instant boiling water tap. There is a tiled and glass splash back and a side facing window in the kitchen area. The dining area has a rear facing window with stunning views over the garden and fields beyond and a wood burning stove with wooden mantle over and slate hearth. From the entrance lobby, stairs rise to the first floor landing with side facing window and ladder access into the part boarded loft space. There are two generous double bedrooms, one with a front facing window and the other with a rear facing window, both with stunning countryside views, neutral decor and cream carpets. The third bedroom is a good size with a front facing window with fantastic views. The family bathroom has a white suite, P-shaped bath with shower over, WC and basin and is tiled in white with vinyl tiled flooring. Outside, to the rear is a south facing, enclosed garden which has lots of wildlife and has a paved patio, lawn with established borders, raised decked terrace with wood store and fantastic views over the fields behind. To the side is a detached garage/workshop with an up and over door, side access door, power and light and a block paved, gated driveway providing off road parking. To the front is a further lawned garden with established planted borders and a hedge providing privacy from the road. Marsh Lane Village, close to Eckington village is steeped in local history, conservation areas and offers a host of superb local amenities and village schools. The area boasts a public swimming baths and superb local restaurants and gastro style eateries in the surrounding areas. Ideally situated for links to the M1 motorway networks, Sheffield city centre and nearby Crystal Peaks shopping centre. Renishaw Hall and local surrounding countryside and walks on the Pennine trail provide plenty of choice. The area is popular with buyers of all ages and has excellent bus and transport links.





- Spacious Semi Detached House
- 3 Bedrooms
- Lovely Dining Kitchen
- Integrated Appliances
- Modern Bathroom
- Stunning Views From All Aspects
- South Facing Garden
- Driveway Providing Off Road Parking
- Detached Garage with Power & Light
- No Chain - Freehold

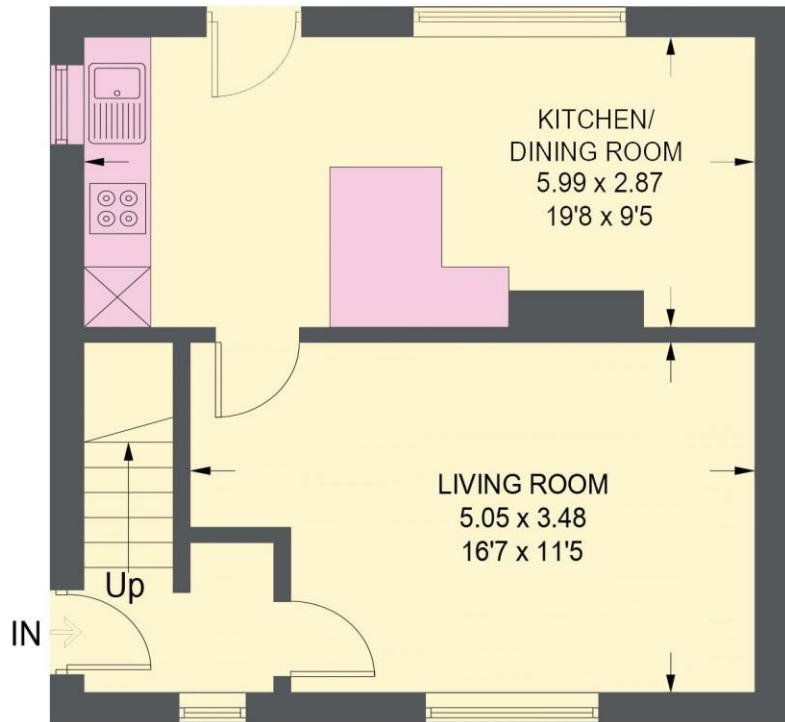


59 MAIN ROAD

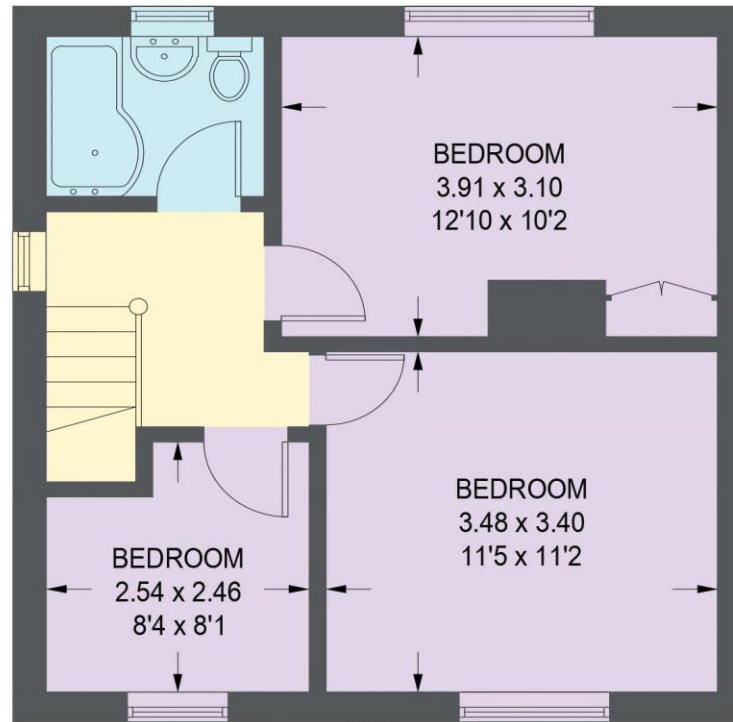
APPROXIMATE GROSS INTERNAL AREA = 78.8 SQ M / 848 SQ FT

GARAGE = 13.6 SQ M / 146 SQ FT

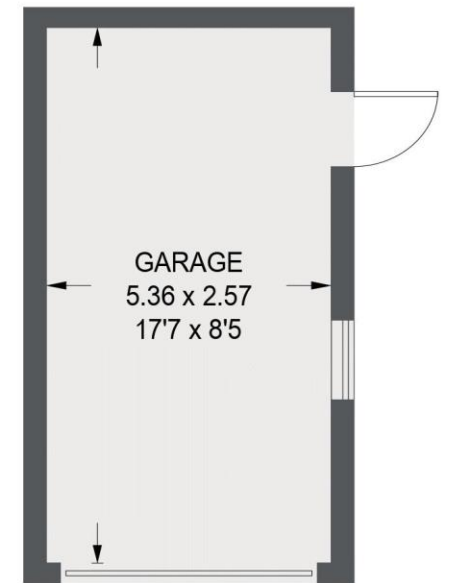
TOTAL = 92.4 SQ M / 994 SQ FT



GROUND FLOOR
39.5 SQ M / 425 SQ FT



GROUND FLOOR
39.3 SQ M / 423 SQ FT



(NOT SHOWN IN ACTUAL
LOCATION / ORIENTATION)

Illustration for identification purposes only, measurements are approximate, not to scale.

IMPORTANT: we would like to inform prospective purchasers that these sales particulars have been prepared as a general guide only. A detailed survey has not been carried out, nor the services, appliances and fittings tested. Room sizes should not be relied upon for furnishing purposes and are approximate. If floor plans are included, they are for guidance only and illustration purposes only and may not be to scale. If there are any important matters likely to affect your decision to buy, please contact us before viewing the property.

