







P. CVIRKOS G-VĚ







## 438 Fulwood Road

Fulwood • Sheffield • S10 3GH

Asking Price £795,000

Tucked away within a private hamlet off Fulwood road is a stunning 3 bedroom stone built cottage. Reconfigured and sympathetically renovated by the current owner creating a fabulous family home, stylishly presented throughout, complemented by original features. Benefits from a superb enclosed rear garden and off-street parking for multiple vehicles. Viewing is highly recommended to full appreciate the size and finish of this beautiful home. The property enters through a tiled porch providing cloakroom storage into a generously proportioned lounge, creating a cosy feel, which features 3 front facing windows and log burning stove. Overlooking the stunning garden, providing direct access through French doors is a snug complete with log burner. A separate dining room features an original stone fireplace adjoining the kitchen. A wooden shaker style kitchen design is topped with quartz worktops and Belfast sink offering a pleasant garden outlook. Offering generous storage and centre island, providing integrated double oven, gas hob, washing machine, dishwasher and fridge freezer. The first floor comprises 3 beautifully presented double bedrooms, all styled in fresh, neutral palette, fitted with bespoke solid wooden wardrobe storage. The generous landing area provides a flexible living space with potential to create a fourth bedroom if required. The family bathroom is equipped with traditional white suite and separate corner enclosure. Built in storage houses the combination boiler. Externally located at the front of the property is off street parking for multiple vehicles alongside an attractive front garden designed with seating area, raised beds and garden storage. To the rear is a private, secluded low maintenance outdoor space, creating a tranquil seating / entertaining space stocked with an array of colourful planting and summer house. The cottage is well-placed for local shops and amenities in Nether Green and Ranmoor, highly regarded local schools, recreational facilities and access to the city centre, hospitals, universities and the Peak District.









- Stunning Stone Built Cottage
- Located In Private Hamlet Off Fulwood Road
- Beautifully Refurbished Throughout
- Stylish Interior & Original Features
- 3 Bedrooms with Potential for 4th
- Sought After Location in S10
- Superb Enclosed Rear Garden
- Off Street Parking for Multiple Vehicles
- Freehold
- Council Tax Band E, EPC Rating D







# 438 FULWOOD ROAD

APPROXIMATE GROSS INTERNAL AREA = 160.6 SQ M / 1729 SQ FT

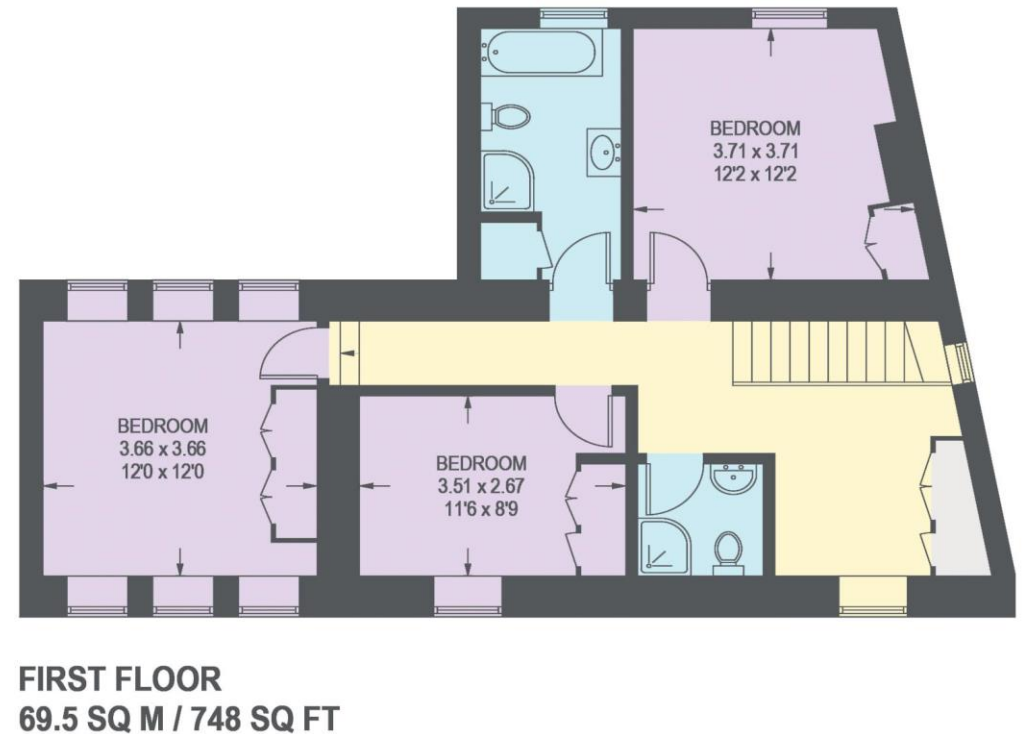
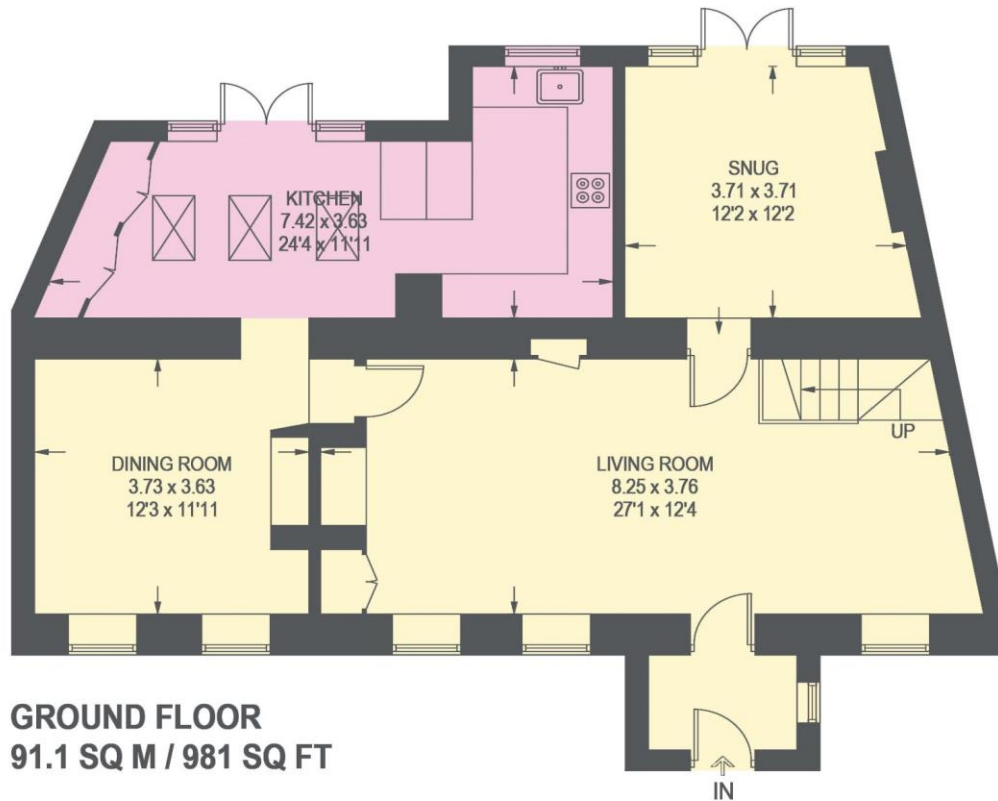


Illustration for identification purposes only, measurements are approximate, not to scale.

IMPORTANT: we would like to inform prospective purchasers that these sales particulars have been prepared as a general guide only. A detailed survey has not been carried out, nor the services, appliances and fittings tested. Room sizes should not be relied upon for furnishing purposes and are approximate. If floor plans are included, they are for guidance only and illustration purposes only and may not be to scale. If there are any important matters likely to affect your decision to buy, please contact us before viewing the property.



