





500 West One Panorama

Fitzwilliam Street • Sheffield • S1 4JQ

Guide Price £185,000 - £200,000

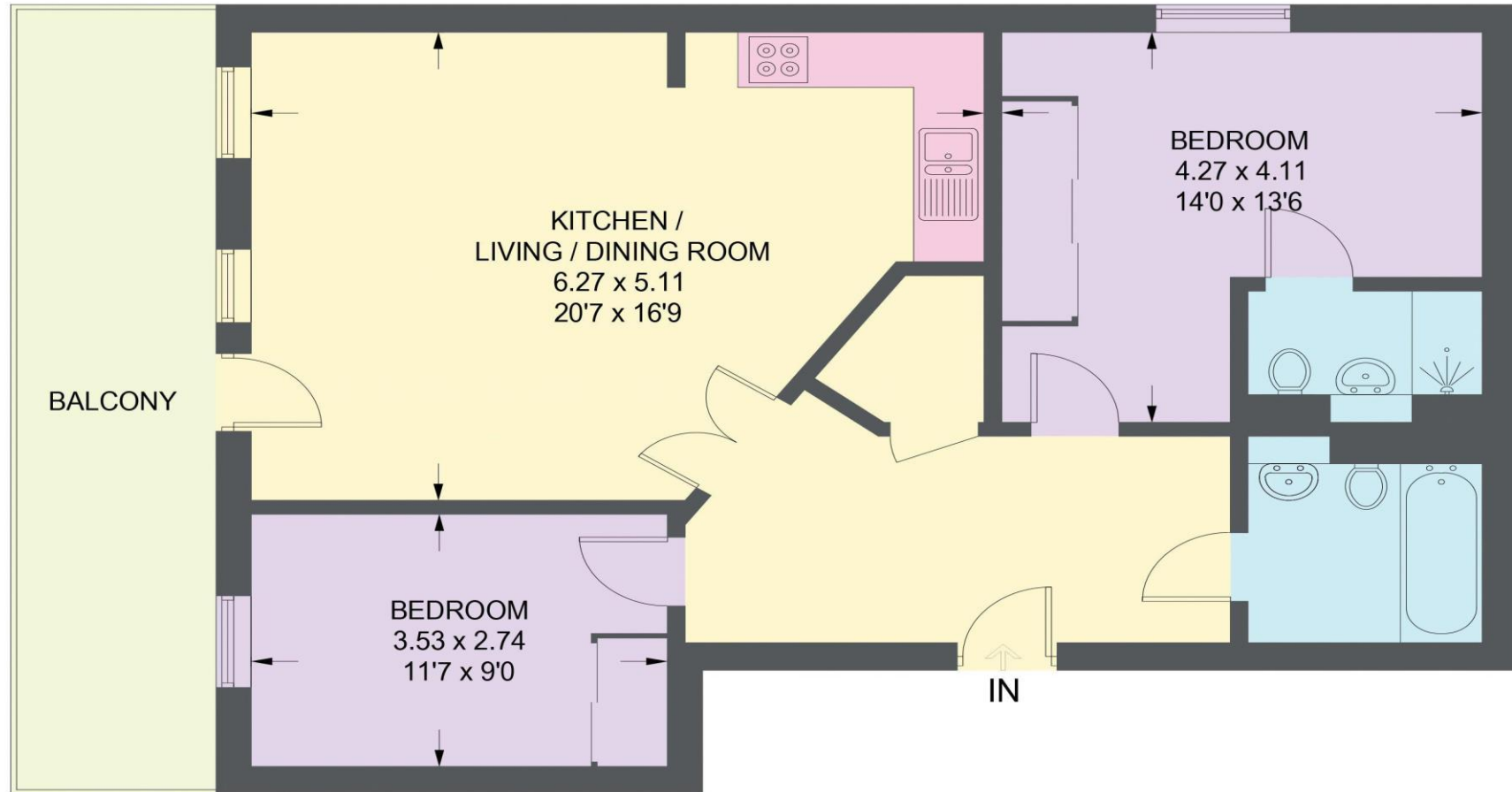
A modern and spacious 2 bedroom, 2 bathroom apartment, with parking space. Located on the fifth floor of the sought after West One development with a large balcony overlooking Devonshire Green. Ideal 1st time buy or investment property and offered to the market with no onward chain. As you enter the apartment, you are taken into the spacious hallway. Straight forward is the open plan living space with laminate flooring, stone tiled feature wall and modern kitchen space including fridge freezer, washing machine and dishwasher. There is also access onto the large balcony which overlooks Devonshire Green. The master bedroom is complete with large, fitted wardrobes and an en-suite shower room, the second bedroom also has a double wardrobe and space for a double bed or could be used as a home office. The main bathroom is just off the hallway with w.c, sink and shower over bath. This apartment also comes with one space in the undercroft car park. Well maintained communal gardens. Ideally positioned for City Centre living, Devonshire Green, public transport including the Supertram and Sheffield Train Station, along with access to the Hospitals and Universities.



- Spacious 5th floor apartment
- 2 Bedrooms and 2 Bathrooms
- Large Balcony Overlooking Devonshire Green
- Undercroft Parking
- City Centre Location
- No Onward Chain
- Service charge approx £2462 pa
- Communal Gardens
- Leasehold 150 years from 30th June 2004
- Council Tax Band A, EPC Rating C

500 WEST ONE PANORAMA

APPROXIMATE GROSS INTERNAL AREA = 74.9 SQ M / 806 SQ FT



FIFTH FLOOR

Illustration for identification purposes only, measurements are approximate, not to scale

IMPORTANT: we would like to inform prospective purchasers that these sales particulars have been prepared as a general guide only. A detailed survey has not been carried out, nor the services, appliances and fittings tested. Room sizes should not be relied upon for furnishing purposes and are approximate. If floor plans are included, they are for guidance only and illustration purposes only and may not be to scale. If there are any important matters likely to affect your decision to buy, please contact us before viewing the property.