







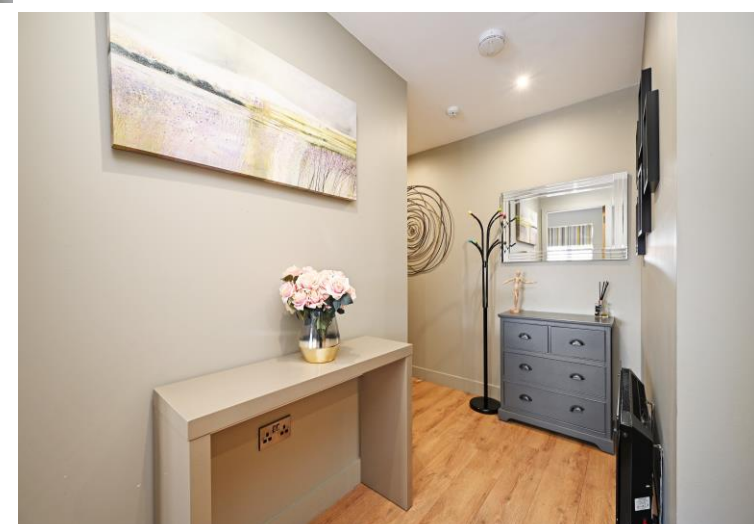
## 44 Parkview

14 Fitzalan Road • Sheffield • S13 9AW

Guide Price £130,000 - £140,000

A modern 2 double bedroom second floor apartment, stylishly presented throughout located in a convenient position beside Handsworth Park, S13. Built in 2019 this development offers beautiful accommodation which benefits from a allocated parking and excellent transport link to to the city centre. Available with no onward chain. Enters through a secure intercom communal door with stairs rising to a private entrance on the second floor. The entrance hall is presented in modern grey tones creating a great first impression leading through to an open plan living area complemented by Juliette balcony filling the space with natural light. A flexible living / dining area is styled in modern tones and wood effect floor. The kitchen is fitted with a range of modern gloss white units and contrasting tiled splashbacks including integrated oven, hob, dishwasher, washing machine and fridge freezer. There are 2 front facing beautifully presented double bedrooms , the larger size complete with partially tiled ensuite shower room. The bathroom is equipped with 3 piece white suite, built in TV, partially tiled and heated towel rail. Fitzalan Road occupies a convenient position with access to local shops, schools, public transport and excellent access to Sheffield City Centre and the motorway network. Lease 125yrs Jan 2018 GR is £110 p.a Annual SC £1,122 p.a -Blue Property Management EPC Rating B





- Modern 2nd Floor Apartment Built in 2019
- 2 Double Bedrooms
- Stylishly Presented Throughout
- Modern Kitchen with Integrated Appliances
- Open Plan Living & Juliette Balcony
- Allocated Parking Space
- Excellent Transport Links to City Centre
- Annual SC £1,122 p.a -Blue Property Management
- Lease 125yrs Jan 2018 GR is £110 p.a
- EPC Rating B, Council Tax Band TBC



# 44 PARK VIEW

APPROXIMATE GROSS INTERNAL AREA = 54.4 SQ M / 585 SQ FT

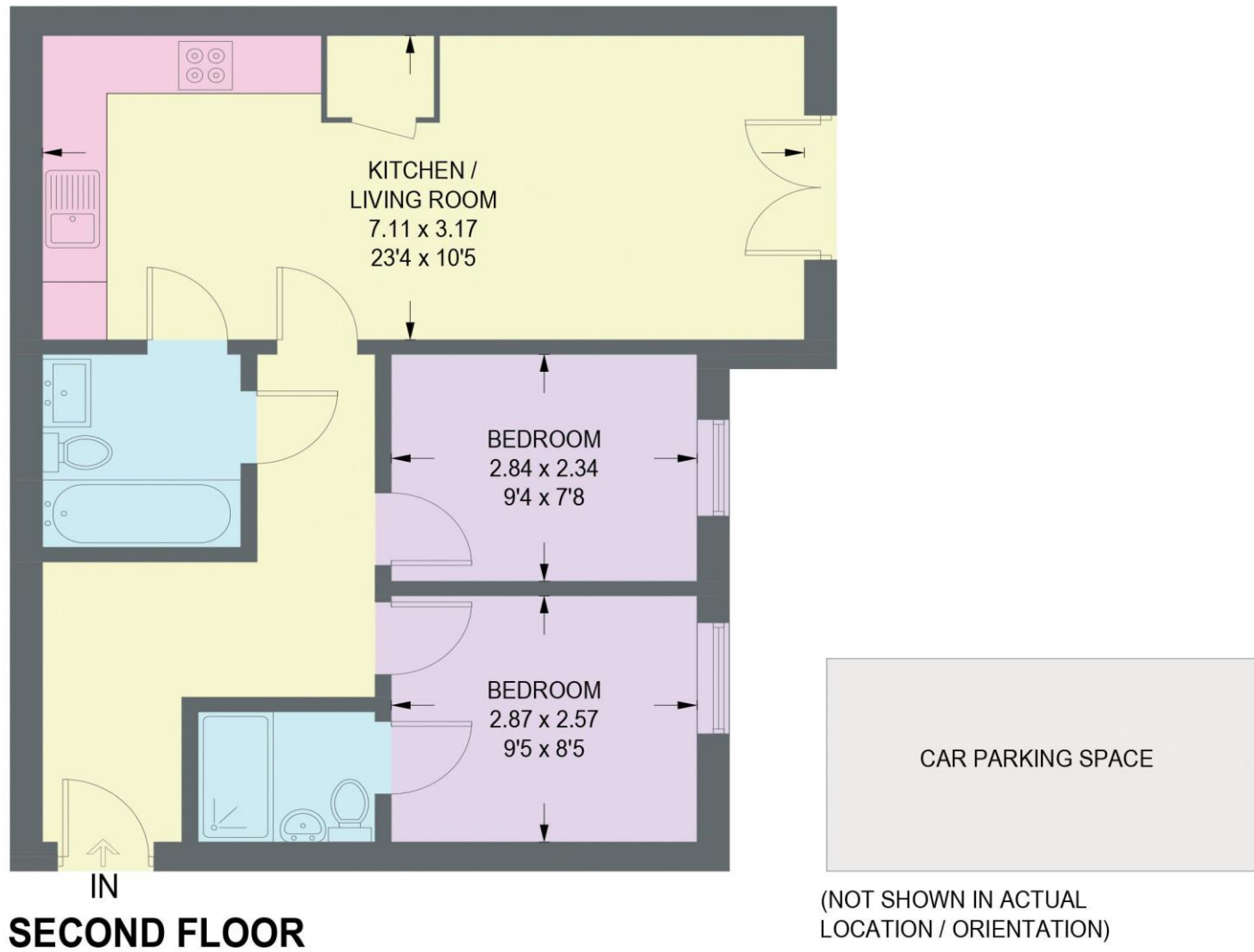


Illustration for identification purposes only,  
measurements are approximate, not to scale.



haus

West Bar House, 137 West Bar, Sheffield, S3 8PU  
[hello@haushomes.co.uk](mailto:hello@haushomes.co.uk) [haushomes.co.uk](https://haushomes.co.uk)

0114 276 8868