







149 Long Line

Dore • Sheffield • S11 7TX

£750,000

A spacious, extended and flexible 4 bedroom detached family home, occupying a large, level south facing plot which adjoins opens farmland to the rear. The property is superbly presented throughout with a large family kitchen providing a real heart of the home, with ample space for dining and living areas and a stove set to an exposed brick chimney breast. The kitchen opens onto the patio and garden at the rear. Large reception room with a formal dining area and living area overlooking the lovely garden. 2 double bedrooms on the ground floor and bathroom. On the 1st floor is a superb principal bedroom with far reaching open views, and en-suite bathroom and a further bedroom. Ample off road parking to the front, leading to a garage and a large, level south facing garden at the rear, with a patio providing outside entertaining space. The property will suit a variety of buyers including families, due its excellent school catchment or downsizers, and offers excellent potential to further develop if required. Freehold.



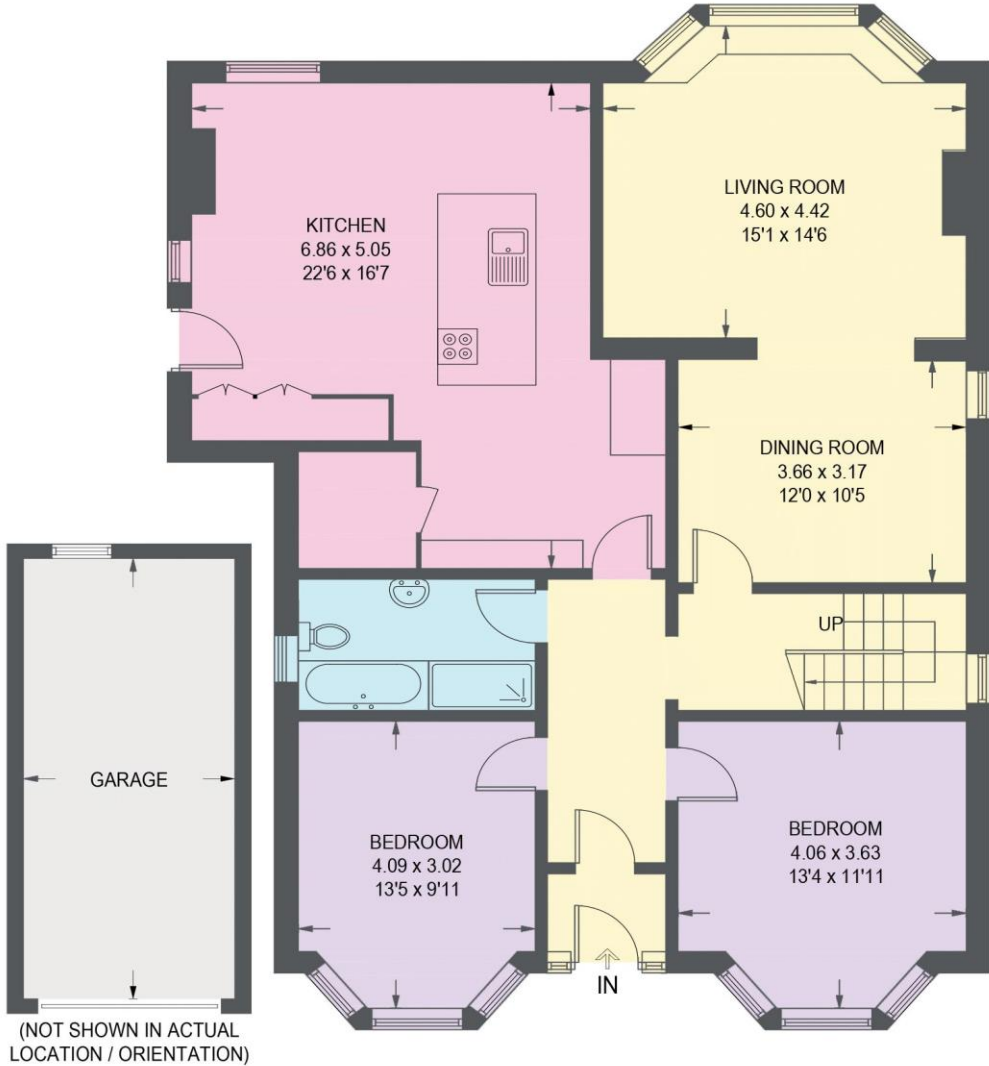


- 4 Bedroom Detached
- Large South Facing Plot
- Adjoining Farmland At The Rear
- Superbly Finished
- Spacious Family Kitchen
- Very Popular Location
- Potential To Develop Further
- No Onward Chain
- Freehold
- EPC - tbc



149 LONG LINE

APPROXIMATE GROSS INTERNAL AREA = 172.1 SQ M / 1852 SQ FT



GROUND FLOOR = 115.8 SQ M / 1246 SQ FT



FIRST FLOOR = 56.3 SQ M / 606 SQ FT

Illustration for identification purposes only, measurements are approximate, not to scale.

IMPORTANT: we would like to inform prospective purchasers that these sales particulars have been prepared as a general guide only. A detailed survey has not been carried out, nor the services, appliances and fittings tested. Room sizes should not be relied upon for furnishing purposes and are approximate. If floor plans are included, they are for guidance only and illustration purposes only and may not be to scale. If there are any important matters likely to affect your decision to buy, please contact us before viewing the property.



haus

West Bar House, 137 West Bar, Sheffield, S3 8PU
hello@haushomes.co.uk haushomes.co.uk

0114 276 8868