





Apt 15 Northside

Barnsley Road • Sheffield • S5 0QJ

Guide Price £95,000 to £100,000

Impressive 2 double bedroom second floor apartment measuring 616 sqft. Neutrally presented throughout filled with natural light, featuring a flexible open plan living space with Juliet balcony, modern kitchen and bathroom. Resident parking is available covered by CCTV. Entering through a secure fob and key system with lift access and stairs rising to a private entrance on the second floor. The inner hallway occupies 2 useful storage cupboards, one cloak cupboard and the other housing the combination boiler (2022) and tumble dryer. The spacious open plan living area is complemented by French doors and Juliet balcony allowing a stream of natural light to flow through the property. To the far end is a modern kitchen fitted with matching wall and base units, contrasting worktops and tiled splashbacks, complete with Baumatic oven and gas hob, offering space with plumbing for further freestanding appliances. There are 2 double bedrooms both presented in a neutral palette with carpet and separate bathroom equipped with 3 piece white suite, partially tiled fitted with chrome heated towel rail. Northside is well placed for local shops and amenities, local schools, recreational facilities and access to the city centre, Meadowhall, motorway and the Northern General Hospital. There is 181 Years left on the lease and ground rent is £150 a year. Service Charge is approx £101.98 pcm Council Tax Band A. EPC Rating C



- Second Floor Apartment in S5
- 2 Double Bedrooms
- Light & Airy Open Plan Living Area
- Modern Kitchen & Dining Area
- Ideal for First time Buyers

- Combination Boiler & Double Glazing
- Resident Parking Available
- Service Charge is approx £101.98 pcm
- 181 Years Left on the Lease, £150pa
- Council Tax Band A, EPC Rating C



15 NORTHSIDE

APPROXIMATE GROSS INTERNAL AREA = 57.3 SQ M / 616.4 SQ FT

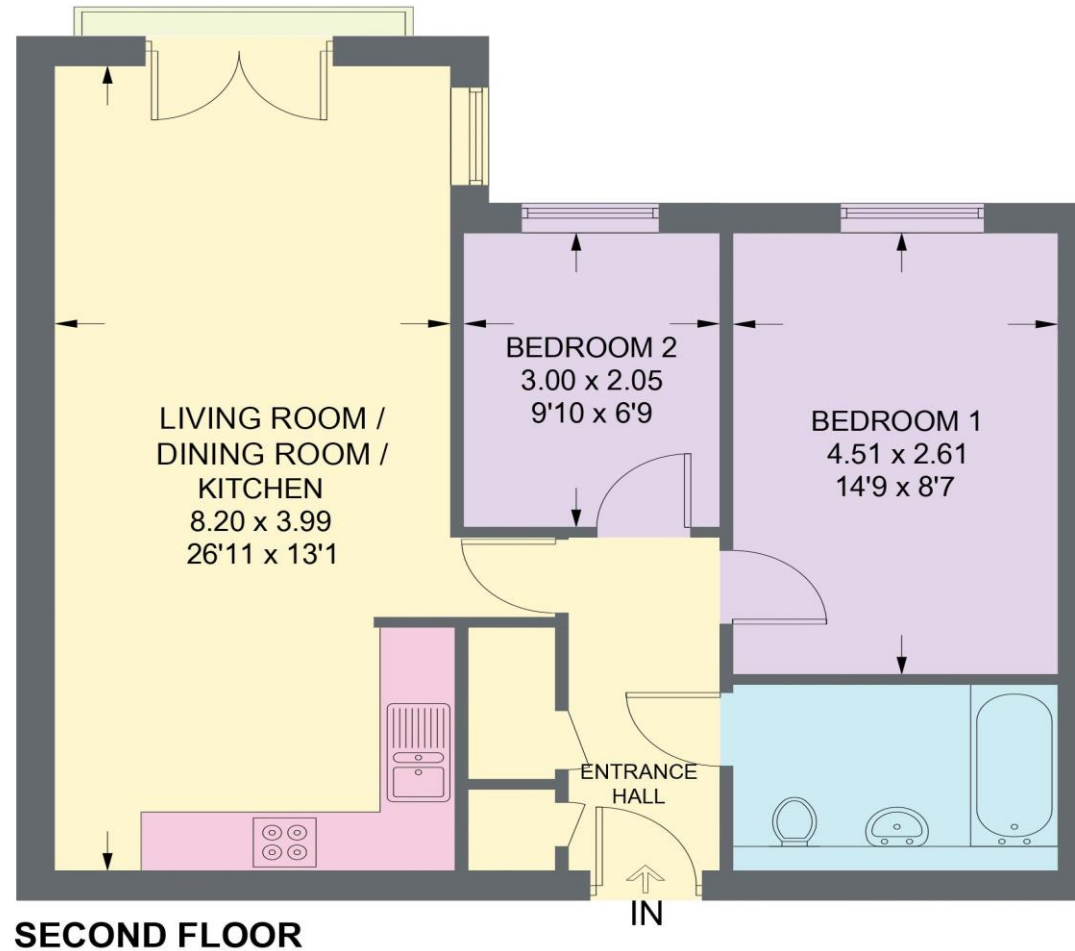


Illustration for identification purposes only,
measurements are approximate, not to scale.

IMPORTANT: we would like to inform prospective purchasers that these sales particulars have been prepared as a general guide only. A detailed survey has not been carried out, nor the services, appliances and fittings tested. Room sizes should not be relied upon for furnishing purposes and are approximate. If floor plans are included, they are for guidance only and illustration purposes only and may not be to scale. If there are any important matters likely to affect your decision to buy, please contact us before viewing the property.