





82 Greenhow Street

Walkley • Sheffield • S6 3TP

Guide Price £200,000 - £220,000

Located in the heart of Walkley, S6, within walking distance of the Bolehills is a 3 bedroom stone fronted, mid terraced property. In need of general updating, arranged over 3 levels, offering fabulous potential. Double glazed throughout. Lovely garden. Freehold. The ground floor features a front facing cosy lounge and a dining kitchen providing cellar access. The kitchen is fitted with a range of wooden shaker style units, contrasting worktops, with space and plumbing for a range of freestanding appliances. Offering a pleasant garden outlook and space for a dining table. The first floor comprises of two bedrooms, a generously proportioned double with walk in closet and smaller rear facing bedroom, ideal for a child, dressing room, or study. The bathroom is equipped with 3-piece white suite, partially tiled walls, and contrasting tiled floor. Stairs rise to the second floor creating a third light and airy double bedroom, incorporating built in storage, housing the immersion heater. Externally, accessed through a communal passageway is an attractive, enclosed rear garden, laid predominantly to lawn, filled with an array of colourful planted borders and established bushes. Greenhow Street is well-placed for local shops and amenities in Walkley and Crookes including a growing café culture, with pubs and restaurants. There are good access links to the city centre, hospitals, universities and edge of Peak District.



- Stone Fronted Mid Terraced Property
- 3 Bedrooms
- Located in Heart of Walkley, S6
- In Need of General Updating
- Double Glazing Throughout
- Arranged Over 3 Levels
- Close to a Range of Amenities
- Attractive Enclosed Rear Garden
- Freehold
- Council Tax Band A, EPC Rating TBC

82 GREENHOW STREET

APPROXIMATE GROSS INTERNAL AREA = 78.0 SQ M / 839 SQ FT

CELLAR = 16.4 SQ M / 176 SQ FT

TOTAL = 94.4 SQ M / 1015 SQ FT

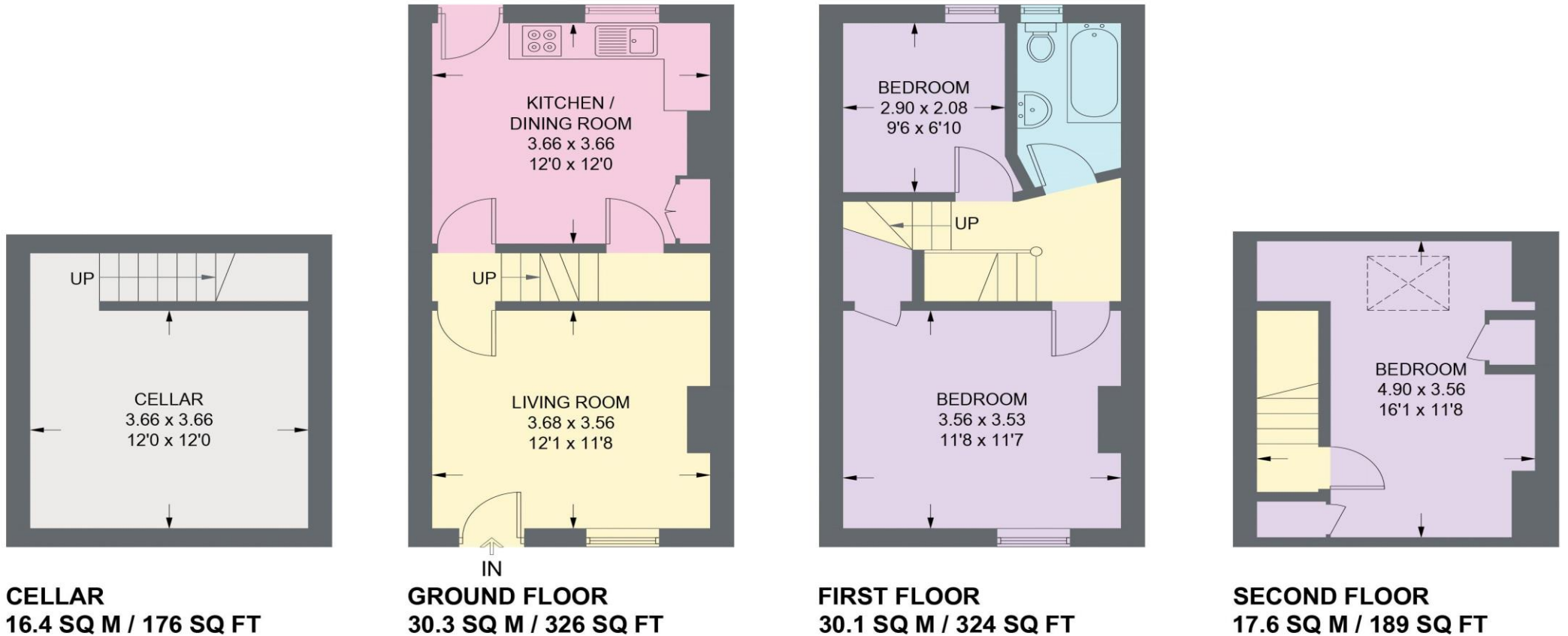


Illustration for identification purposes only,
measurements are approximate, not to scale.

IMPORTANT: we would like to inform prospective purchasers that these sales particulars have been prepared as a general guide only. A detailed survey has not been carried out, nor the services, appliances and fittings tested. Room sizes should not be relied upon for furnishing purposes and are approximate. If floor plans are included, they are for guidance only and illustration purposes only and may not be to scale. If there are any important matters likely to affect your decision to buy, please contact us before viewing the property.