



Munro Court





1 Munro Court

Bartin Close • Ecclesall • S11 9GF

Asking Price £125,000

Munro Court located off Ecclesall road is a lovely 1-bedroom ground floor apartment set within this sought-after over 60's independent living development. Well maintained property featuring 24/7 emergency pull cords, an on-site manager, electric heaters, double glazing, private south facing patio, landscaped communal gardens, a communal residents lounge and an array of social activities. No Chain. Accessed through a secure intercom entrance. This well-maintained ground floor apartment enters into a welcoming hallway equipped with generous storage cupboard housing the consumer unit. Spacious light and airy lounge with feature fireplace and patio door leading onto a private south facing patio, complemented by attractive, colourful planting. The kitchen hosts a range of wood effect wall and base units, complementary worktops, and tiled splash backs, including an integrated oven and electric hob with space for further freestanding appliances. A spacious double bedroom is fitted with mirrored built in wardrobes and window offering pleasant outlook. The bathroom is equipped with double shower and built in storage housing the boiler. The development includes landscaped communal gardens, social lounge which hosts a range of organised activities and laundry. Allocated resident parking is included within the sale. Conveniently located for local shops & amenities, only a short distance from Ecclesall Road and Endcliffe Park. Transport links are excellent with regular bus routes.





- Over 60's Apartment In Ecclesall
- Located on the Ground Floor
- Double Bedroom with Fitted Wardrobes
- Generous Shower Room
- Spacious Lounge with Feature Fireplace

- On-Site Manager & 24/7 Emergency Pull-Cords
- Communal Gardens & Allocated Parking
- South Facing Patio
- Leasehold, 125 years from 2008, Ground Rent £395pa
- Council tax Band B, EPC TBC





MUNRO COURT

PRIVATE NO PARKING

1 MUNRO COURT

APPROXIMATE GROSS INTERNAL AREA = 45.3 SQ M / 488 SQ FT

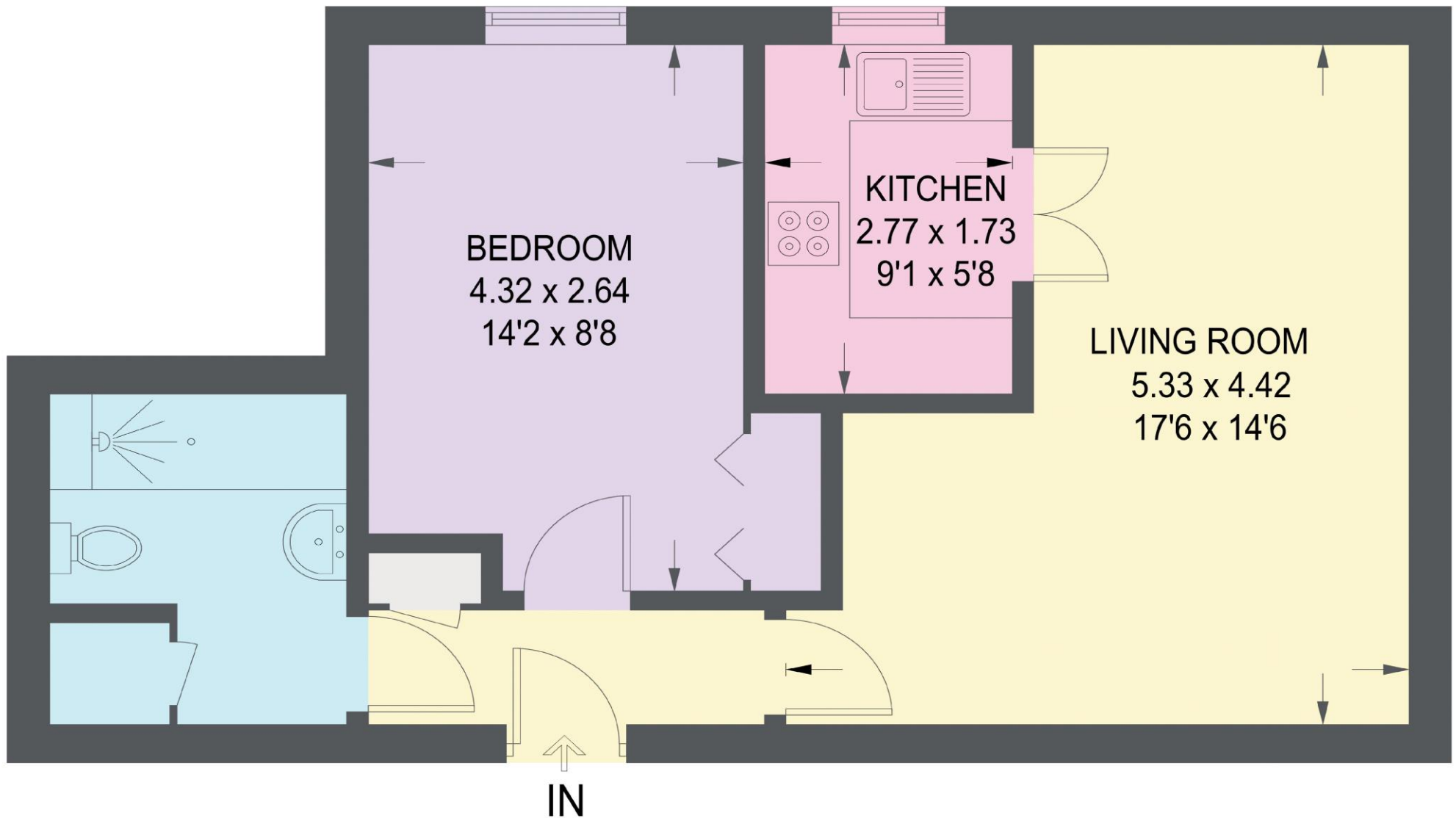


Illustration for identification purposes only, measurements are approximate, not to scale.

IMPORTANT: we would like to inform prospective purchasers that these sales particulars have been prepared as a general guide only. A detailed survey has not been carried out, nor the services, appliances and fittings tested. Room sizes should not be relied upon for furnishing purposes and are approximate. If floor plans are included, they are for guidance only and illustration purposes only and may not be to scale. If there are any important matters likely to affect your decision to buy, please contact us before viewing the property.

