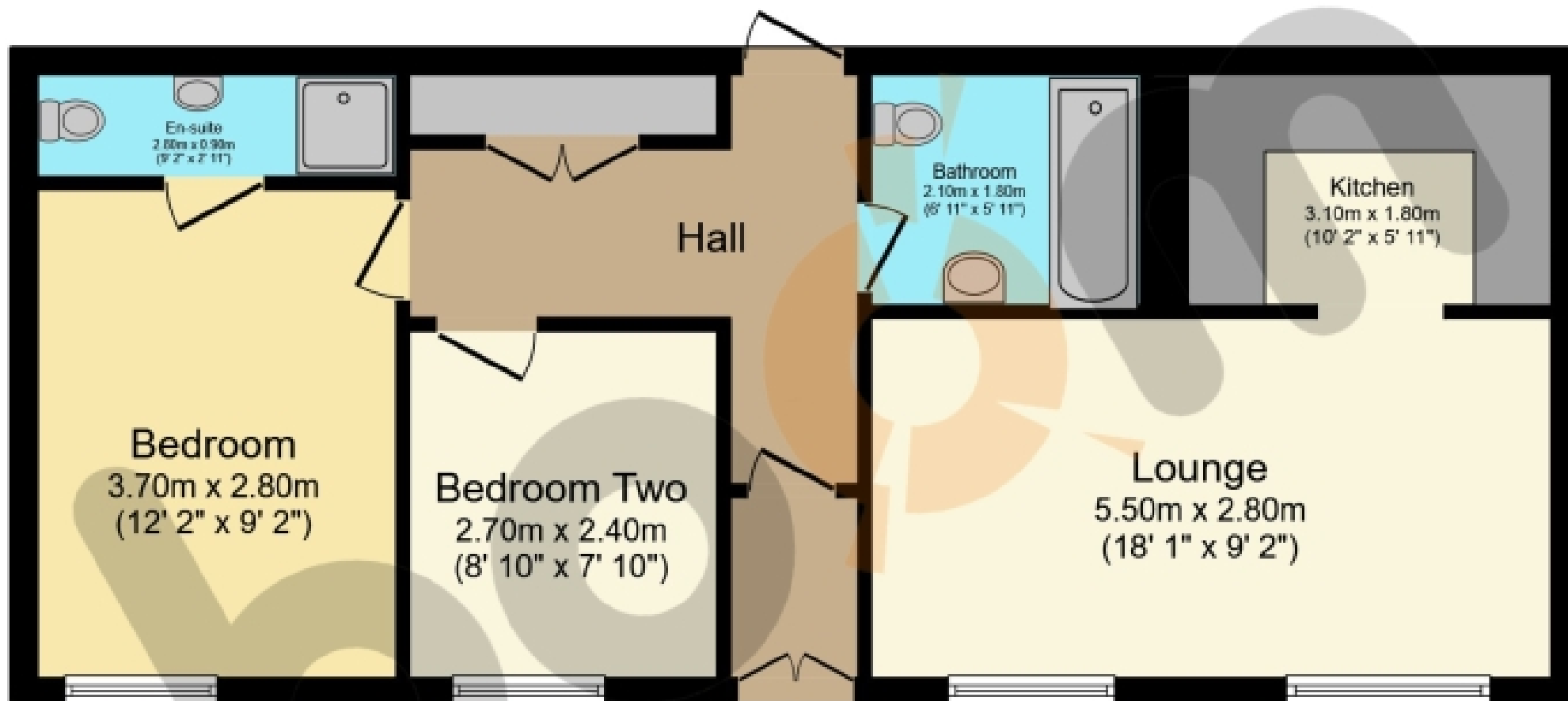




10 Reform Street, Beith

Offers Over £89,995





Floor Plan

Floor area 55.5 sq.m. (597 sq.ft.)

Total floor area: 55.5 sq.m. (597 sq.ft.)

This floor plan is for illustrative purposes only. It is not drawn to scale. Any measurements, floor areas (including any total floor area), openings and orientations are approximate. No details are guaranteed, they cannot be relied upon for any purpose and do not form a part of any agreement. No liability is taken for any error, omission or misstatement. A party must rely upon its own inspection(s). Powered by www.Propertybox.io

THE PROPERTY

***CHARMING GROUND FLOOR FLAT * BEAUTIFULLY MAINTAINED COURTYARD * IMPRESSIVE DIMENSIONS THROUGHOUT * NO ONWARD CHAIN * FANTASTIC FIRST TIME PURCHASE *** Please contact your personal Estate Agents, The Property Boom, for much more information and a copy of the Home Report.

Welcome to No. 10 Reform Street – a delightful two-bedroom ground floor apartment ideally located in the heart of Beith. Just a stone's throw from a wide range of local amenities and excellent public transport links, this charming home is the perfect choice for first-time buyers.

The spacious open-plan lounge and kitchen provide an ideal setting for socialising and everyday living. The lounge is bright and welcoming, featuring two large picture windows that flood the space with natural light. The well-appointed kitchen offers a range of wall and base units paired with granite-effect countertops.

Within the property are two generously proportioned bedrooms with Bedroom One boasting its own en-suite shower room. Completing the property internally is a three-piece family bathroom comprising of bathtub, W.C. and wash hand basin.

To the rear is a beautifully maintained and low maintenance communal courtyard, a secure and vibrant space to relax and unwind.

Private and secure off-street parking is conveniently located to the side of the property.

The property is perfectly situated to enjoy a host of amenities including the local shops, only a few minutes' walk away. Beith primary school and Garnock Community Campus are all within easy reach and the transport links will have you in Glasow by bus in around 30 minutes.

Viewing by appointment - please contact The Property Boom to arrange a viewing or for any further information and a copy of the Home Report. Any areas, measurements or distances quoted are approximate and floor Plans are only for illustration purposes and are not to scale.

WOULD YOU LIKE A FREE DETAILED VALUATION OF YOUR OWN PROPERTY? TAKE ADVANTAGE OF OUR DECADES OF EXPERIENCE AND GET YOUR FREE PROPERTY VALUATION FROM OUR FRIENDLY AND APPROACHABLE TEAM. WE CUT THROUGH THE JARGON AND GIVE YOU SOLID ADVICE ON HOW AND WHEN TO SELL YOUR PROPERTY.

THESE PARTICULARS ARE ISSUED IN GOOD FAITH BUT DO NOT CONSTITUTE REPRESENTATIONS OF FACT OR FORM PART OF ANY OFFER OR CONTRACT.

www.thepropertyboom.com
Head Office : 31 Braehead, Beith, KA15 1EG
Tel: 0333 900 9089 / Email: smile@thepropertyboom.com