



£200,000

TENURE : FREEHOLD

Buxton Close, Top Valley, NG5

Bedrooms : 3

Bathrooms : 2

Reception Rooms : 1

En suite bedroom

Driveway

West facing garden

No upward chain

Ground floor WC

Tomlinson Estate Management Limited
9 High Street, Ruddington, Nottingham, Nottinghamshire, NG11 6DT
sales@tomlinsonestates.co.uk | 01158240368
Website: www.tomlinsonestates.co.uk



Three bedroom semi-detached house located within a quiet cul-de-sac. The property is situated a short drive from Arnold Town Centre with local amenities, shops, and restaurants. Bus links to Mapperley, Nottingham City centre, and surrounding villages/towns are a short walk away. With a number of schools and parks in the area, this property would be ideal for a family or investor.

No upward chain!

Ground Floor

Hallway

Composite front door leading to hallway with storage cupboard. Burglar alarm, smoke detector, thermostat, carpeted flooring and radiator.

Kitchen - 3.24m x 2m (10'8" x 6'7")

Fitted kitchen with electric oven, gas hob, sink and extractor. Combination boiler and space for a washing machine as well as a full height fridge/freezer. Double glazed window, radiator and laminate flooring.

Living Room - 4.63m x 4.81m (15'2" x 15'9")

Spacious living room with french doors leading out to rear garden. Under stair storage cupboard, carpeted flooring, double glazed window and radiator.

WC

Ground floor WC with wash hand basin. Consumer unit, laminate flooring, double glazed window and radiator.

First Floor

Landing

Carpeted stairs/landing with smoke detector, radiator and loft access.

Primary Bedroom with en suite - 2.79m x 4.81m (9'2" x 15'9")

First floor front bedroom with built in wardrobe, carpeted flooring, double glazed windows and radiator. En suite is complete with WC, wash hand basin and electric shower. Extractor fan, laminate flooring, double glazed window and radiator.

Bedroom 2 - 3.33m x 2m (10'11" x 6'7")

First floor rear bedroom, carpeted flooring, double glazed window and radiator.

Bedroom 3 - 2.32m x 2.66m (7'7" x 8'9")

First floor rear bedroom, carpeted flooring, double glazed window and radiator.

Bathroom - 1.47m x 2.76m (4'10" x 9'1")

The bathroom is complete with WC, wash hand basin and bath. Extractor fan, laminate flooring, double glazed window and radiator.

External & Garden

Driveway suitable for one car along with shrubbery and gated side access to rear of property. West facing rear garden with patio/shingled area and lawn. External water tap.

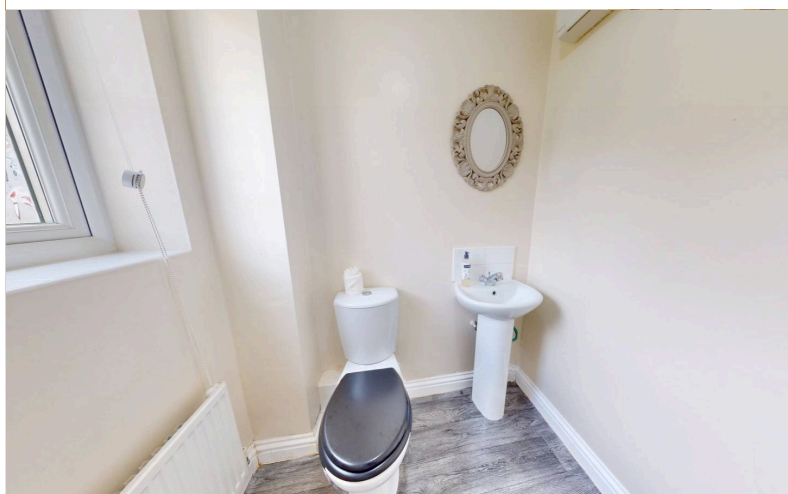
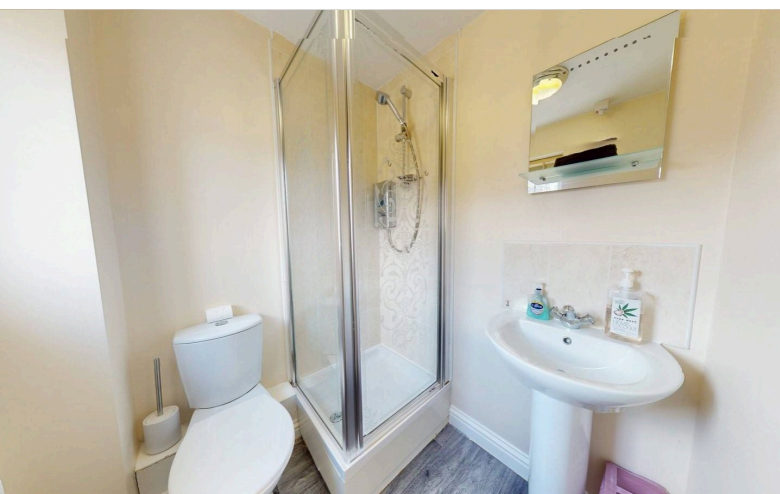
Tomlinson Estate Management Limited

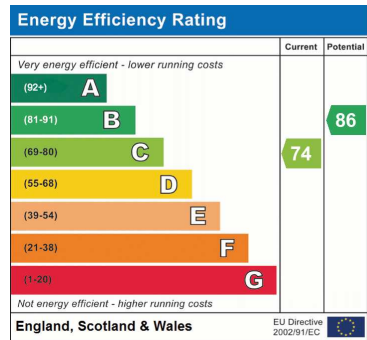
9 High Street, Ruddington, Nottingham, Nottinghamshire, NG11 6DT

sales@tomlinsonestates.co.uk | 01158240368

Website: www.tomlinsonestates.co.uk







Address: Buxton Close, Top Valley, NG5