



Doncaster Close
Stevenage | SG1 5RY

AGENT HYBRID

£315,000 - £350,000



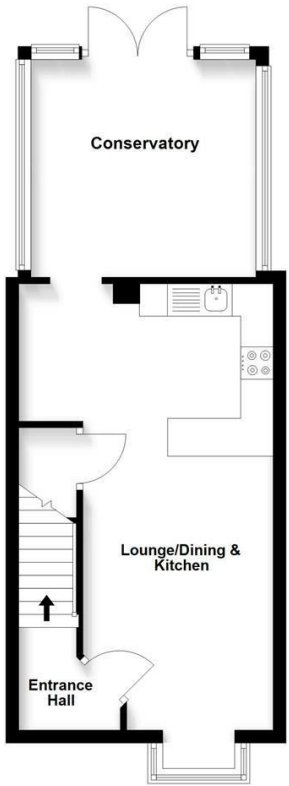
We welcome to the market a Two Bedroom End of Terrace Home, located at the end of a cul-de-sac in the popular area of Chells Manor. Offered CHAIN FREE, accommodation briefly comprises of. An Entrance Hallway, with a door leading into a bay fronted Lounge. The dividing wall between the lounge and kitchen has been removed to create an open plan Lounge/Kitchen and Dining area, extenuating the feel of space. The kitchen is fitted in white gloss units, with chefs style work tops and space for a washing machine, dishwasher and sizeable fridge/freezer. An opening leads out to a fully glazed Conservatory, with French doors leading out the rear garden. Stairs rise to the first floor landing where you will find Two Double Bedrooms and the Bathroom. Externally, the property benefits from a Private Rear Garden, with convenient gated access leading to the parking area, of which you will find an allocated space for one car.

DIMENSIONS

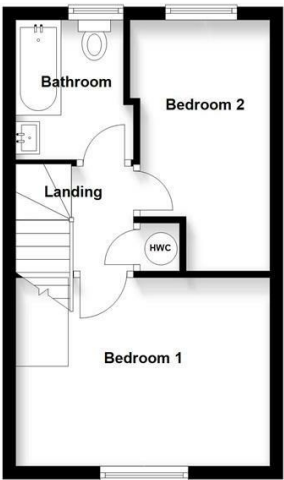
- Entrance Hallway
- Lounge/Ding & Kitchen 22'7 x 12'8 (max to max)
- Conservatory 11'1 x 11'0
- Bedroom 1: 12'8 x 9'7
- Bedroom 2: 12'9 x 7'5
- Bathroom 7'8 x 5'5

Energy Efficiency Rating		
	Current	Potential
Very energy efficient - lower running costs		
(92 plus) A		
(81-91) B		
(69-80) C		
(55-68) D		

Ground Floor
Approx. 39.4 sq. metres (424.3 sq. feet)



First Floor
Approx. 27.1 sq. metres (291.3 sq. feet)



Total area: approx. 66.5 sq. metres (715.6 sq. feet)

IMPORTANT: We would like to inform prospective purchasers that these sales particulars have been prepared as a general guide only. A details survey has not been carried out, not the service, appliances and fittings tested. Rome sizes should not be relied upon for furnishing purposed and are approximate. If floor plans are included, they are for guidance and illustration purposes only and may not be to scale. If there are any important matters likely to affect your decision to buy, please contact us before viewing the property.

Agent Hybrid
57 High Street, Stevenage, Hertfordshire, SG1 3AQ
Tel: 01438 870673 - enquiries@agenthybrid.co.uk
www.agenthybrid.co.uk

AGENT HYBRID