



Windermere Close
Stevenage | SG1 6AG

AGENT HYBRID

Guide Price £525,000 -
£550,000

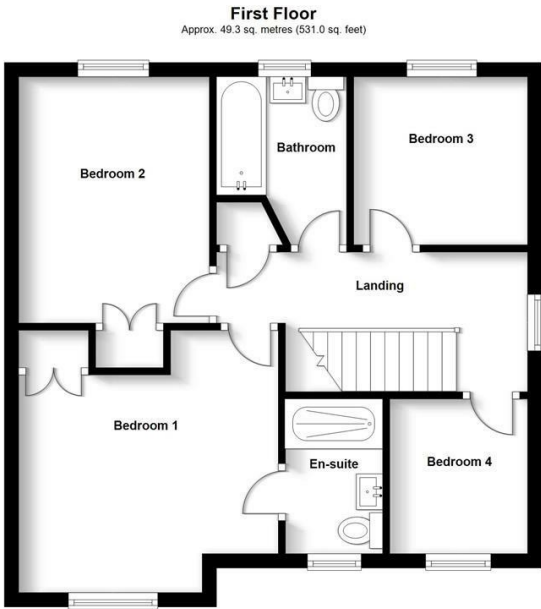
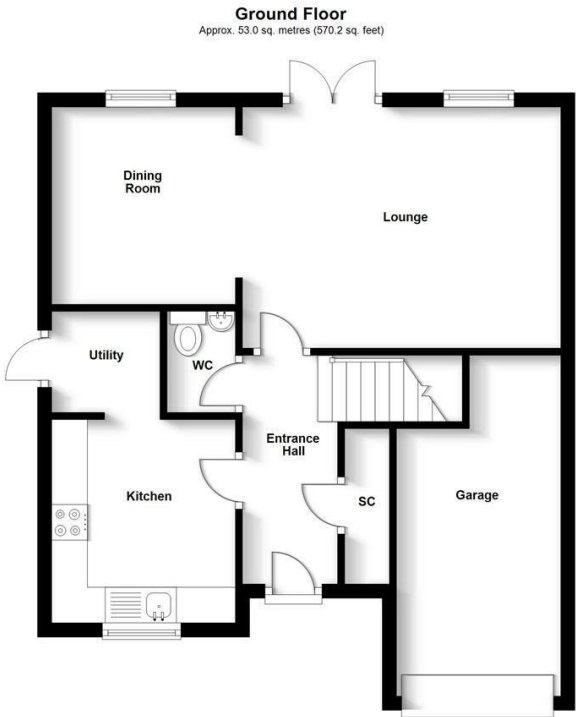


GUIDE PRICE £525,000 - £550,000 * We proudly present this CHAIN FREE and move-in ready Four Bedroom Detached Family Home, nestled at the end of a private cul-de-sac of four houses in the highly sought-after Great Ashby area of Stevenage. This property is conveniently located near the District Park. The accommodation includes an entrance hallway with doors leading to a useful storage cupboard, a downstairs WC, a modern kitchen and a separate utility area. Additionally, there is a spacious lounge at the rear of the house that flows seamlessly into a separate dining room. Stairs lead to the first-floor landing, where you'll find a modern re-fitted family bathroom, three double bedrooms, and one single bedroom. The master bedroom is complete with a modern re-fitted en-suite. Externally, the property boasts a private rear garden that backs onto woodland and features a large summer house. At the front, there is an integral single garage and a driveway with space for at least two cars.

DIMENSIONS

- Entrance Hallway
- Downstairs WC
- Kitchen 9'1 x 9'1
- Utility Area
- Lounge 15'2 x 11'7
- Dining Room 9'9 x 9'2
- Bedroom 1: 12'7 x 12'6
- En-Suite
- Bedroom 2: 11'8 x 9'0
- Bedroom 3: 8'3 x 8'1
- Bedroom 4: 7'4 x 6'10
- Family Bathroom
- Integral Garage

Energy Efficiency Rating		
	Current	Potential
Very energy efficient - lower running costs		
(92 plus) A		85
(81-91) B		
(69-80) C	69	
(55-68) D		



Total area: approx. 102.3 sq. metres (1101.2 sq. feet)

IMPORTANT: We would like to inform prospective purchasers that these sales particulars have been prepared as a general guide only. A details survey has not been carried out, not the service, appliances and fittings tested. Some sizes should not be relied upon for furnishing purposes and are approximate. If floor plans are included, they are for guidance and illustration purposes only and may not be to scale. If there are any important matters likely to affect your decision to buy, please contact us before viewing the property.

Agent Hybrid
57 High Street, Stevenage, Hertfordshire, SG1 3AQ
Tel: 01438 870673 - enquiries@agenthybrid.co.uk
www.agenthybrid.co.uk

AGENT HYBRID